

## Alprenolol - Isocratic, LC-MS

---

Waters Corporation



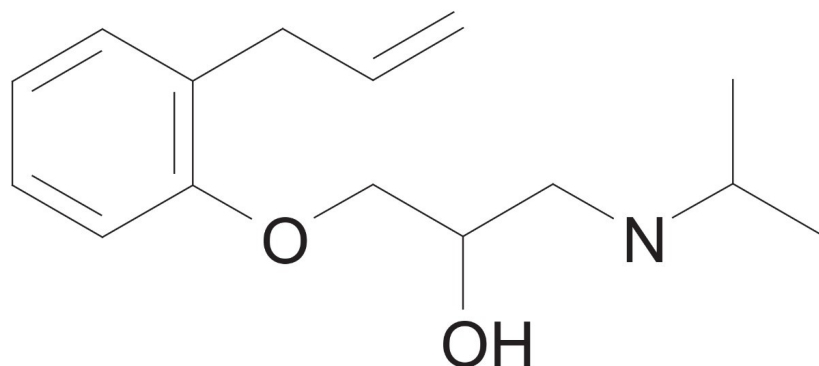
This is an Application Brief and does not contain a detailed Experimental section.

### Abstract

This application brief demonstrates analysis of alprenolol.

## Introduction

The compound analyzed in this study is alprenolol.



# Alprenolol

## Experimental

### Isocratic LC Conditions

Column:	Xterra MS C <sub>18</sub> 2.1 x 30 mm, 3.5 μm
Part number:	186000398
Mobile phase A:	0.1% HCOOH, pH 2.5
Mobile phase B:	0.1% HCOOH in ACN
Flow rate:	0.2 mL/min to MS
Isocratic mobile phase composition:	85% A: 15% B

---

Injection volume:	20 $\mu$ L of 100 $\mu$ g/mL
Temperature:	Ambient
Detection:	MS ESI <sup>+</sup> , SIR 250.19
Instrument:	Alliance 2795 HT, Micromass ZQ

## MS Conditions

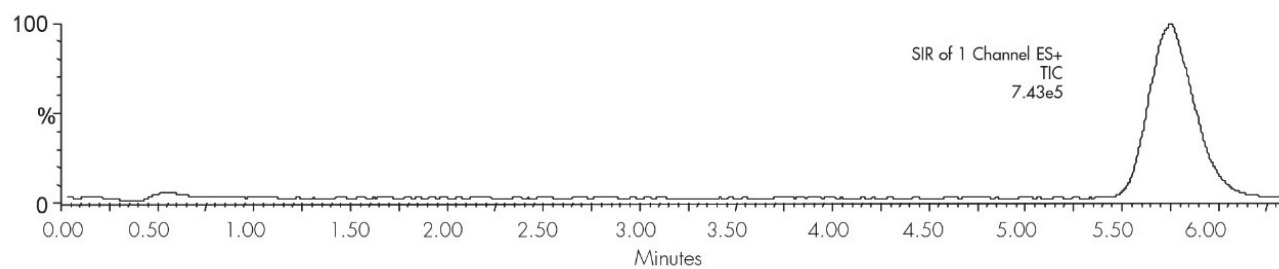
Micromass ZQ ESI<sup>+</sup>

Capillary (KV):	3
Cone (V):	30
Extractor:	3
RF lens:	0.5
Source temp.:	150
Desolvation temp.:	350
Cone gas flow (L/Hr):	60
Desolvation gas flow (L/Hr):	500
LM resolution:	15
HM resolution:	15
Ion energy:	1

Micromass ZQ ESI+

Multiplier (V): 650

## Results and Discussion



## Featured Products

· [Alliance HPLC System <https://www.waters.com/534293>](https://www.waters.com/534293)

WA20738.008, June 2002



© 2021 Waters Corporation. All Rights Reserved.