

Nota de aplicación

## Chlorpromazine

---

Waters Corporation



This is an Application Brief and does not contain a detailed Experimental section.

---

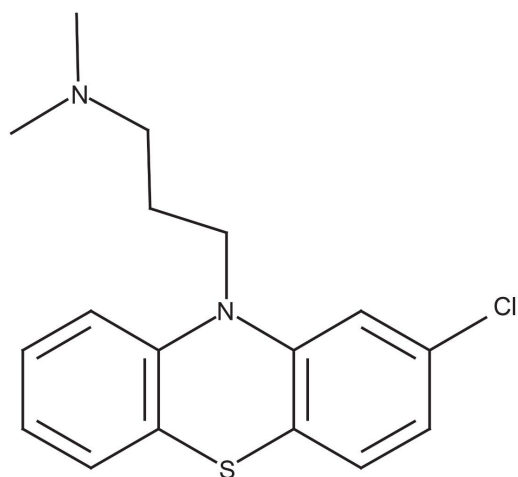
### Abstract

This application brief highlights the analysis of chlorpromazine by LC-MS using XTerra RP<sub>18</sub> Columns.

---

## Introduction

The compound analyzed in this study is chlorpromazine.



## Chlorpromazine

---

## Experimental

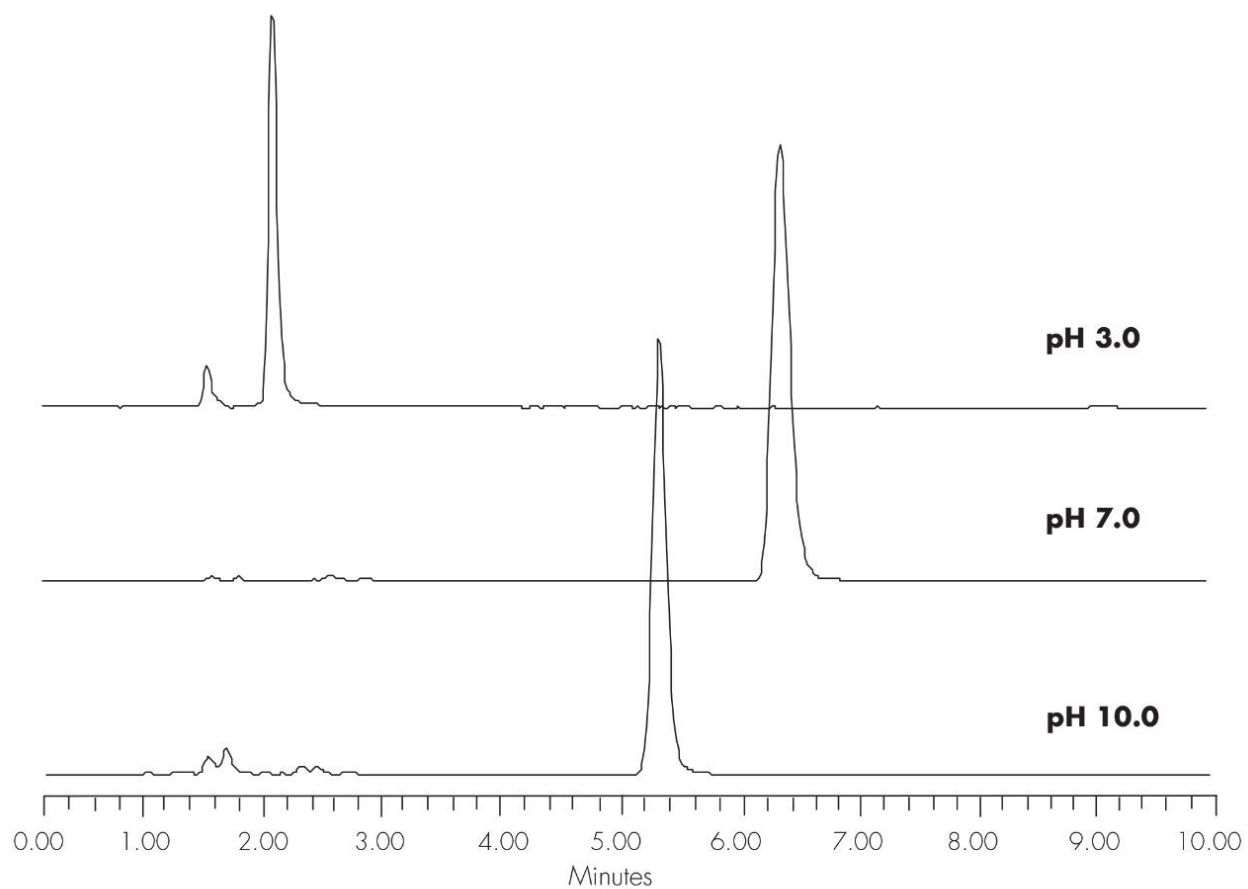
### Conditions

|               |   |
|---------------|---|
| Column:       | XTerra RP <sub>18</sub> 4.6 x 150 mm, 5 μm  |
| Part number:  | 186000492   |
| Mobile phase: | pH 3.0: H <sub>2</sub> O/ACN/100 mM NH <sub>4</sub> COOH, pH 3.0<br>25:65:10<br>pH 7.0: H <sub>2</sub> O/ACN/100 mM NH <sub>4</sub> HCO <sub>3</sub> , pH 7.0<br>30:60:10<br>pH 10.0 H <sub>2</sub> O/ACN/100 mM NH <sub>4</sub> HCO <sub>3</sub> , pH 10.0 |

|                   |                             |
|-------------------|-----------------------------|
|                   | 20:70:10                    |
| Flow rate:        | 1.0 mL/min                  |
| Injection volume: | 5 $\mu$ L of 250 $\mu$ g/mL |
| Temperature:      | 30 $^{\circ}$ C             |
| Detection:        | UV @ 270 nm                 |
| Instrument:       | Alliance 2695, 2996 PDA     |
| Mobile Phase pH   | USP Tailing                 |
| 3.0               | 1.29                        |
| 7.0               | 1.24                        |
| 10.0              | 1.14                        |

---

## Results and Discussion



---

## Featured Products

WA20738.023, June 2002