

응용 자료

Chlorpromazine

Waters Corporation



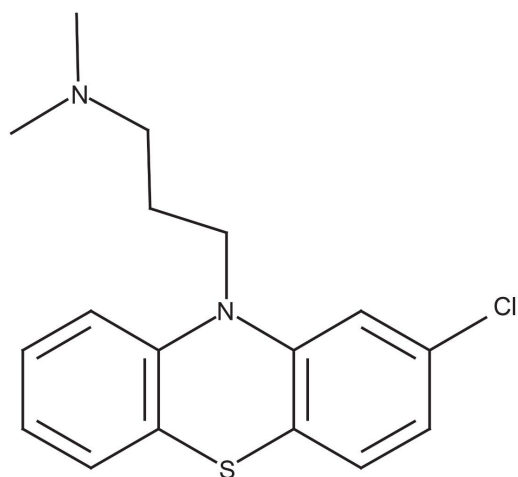
This is an Application Brief and does not contain a detailed Experimental section.

Abstract

This application brief highlights the analysis of chlorpromazine by LC-MS using XTerra RP₁₈ Columns.

Introduction

The compound analyzed in this study is chlorpromazine.



Chlorpromazine

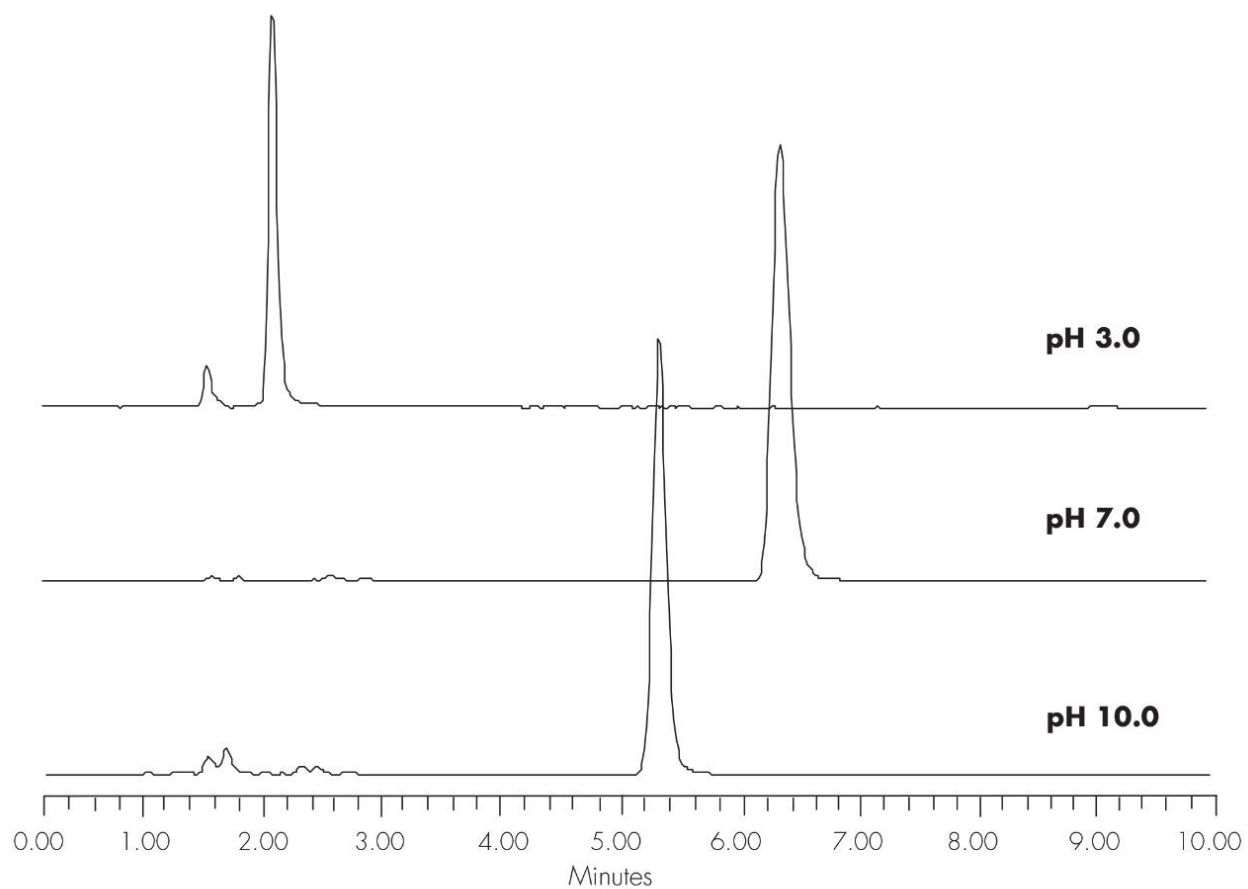
Experimental

Conditions

Column:	XTerra RP ₁₈ 4.6 x 150 mm, 5 μm
Part number:	186000492
Mobile phase:	pH 3.0: H ₂ O/ACN/100 mM NH ₄ COOH, pH 3.0 25:65:10 pH 7.0: H ₂ O/ACN/100 mM NH ₄ HCO ₃ , pH 7.0 30:60:10 pH 10.0 H ₂ O/ACN/100 mM NH ₄ HCO ₃ , pH 10.0

	20:70:10
Flow rate:	1.0 mL/min
Injection volume:	5 μ L of 250 μ g/mL
Temperature:	30 $^{\circ}$ C
Detection:	UV @ 270 nm
Instrument:	Alliance 2695, 2996 PDA
Mobile Phase pH	USP Tailing
3.0	1.29
7.0	1.24
10.0	1.14

Results and Discussion



Featured Products

WA20738.023, June 2002