

## Diclofenac in Rat Plasma

---

Waters Corporation



This is an Application Brief and does not contain a detailed Experimental section.

---

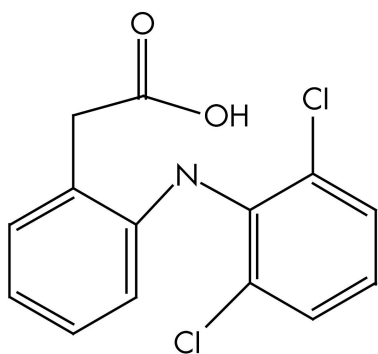
### Abstract

This application brief highlights the analysis of diclofenac using XTerra MS C<sub>18</sub> columns.

---

## Introduction

Diclofenac in rat plasma has been analyzed in this study.



Diclofenac

---

## Experimental

### HPLC Conditions

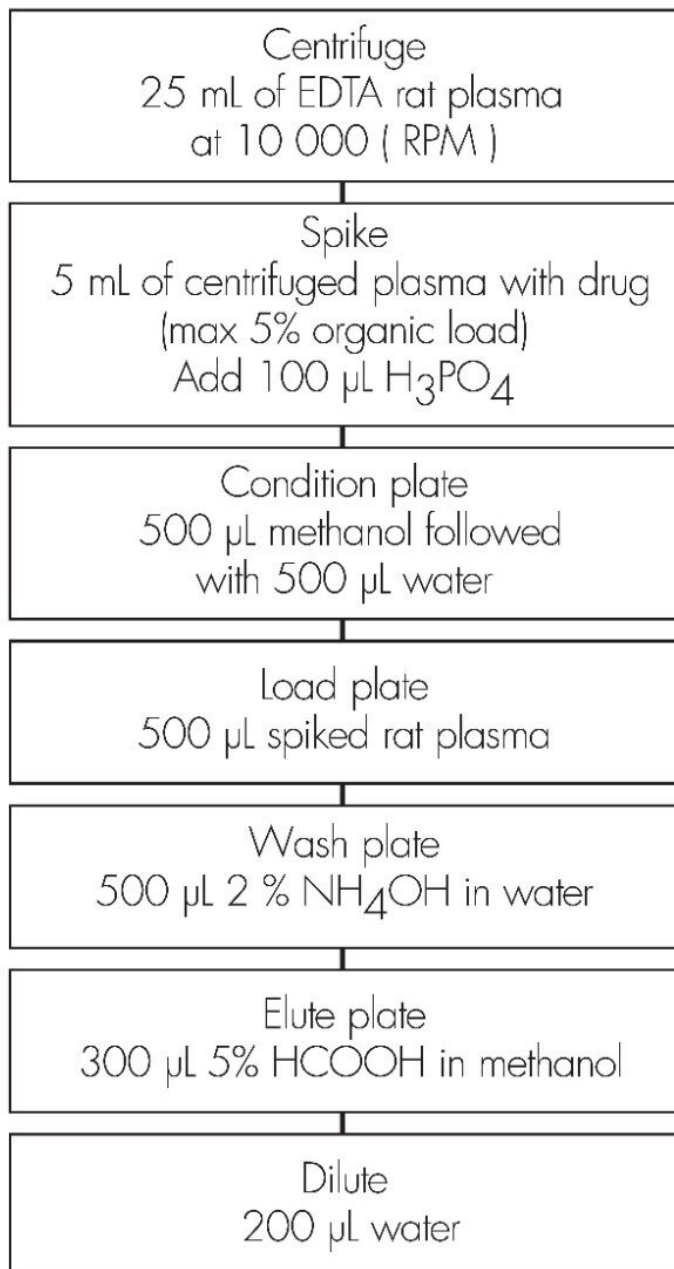
Column:	XTerra MS C <sub>18</sub> 2.1 x 30 mm, 3.5 μm (p/n: 186000398)
Mobile phase A:	0.05% HCOOH
Mobile phase B:	ACN
Isocratic mobile phase composition:	60% A; 40% B
Flow rate:	0.2 mL/min
Injection volume:	50 μL

Detection:	MS ESI-
Instrument:	Alliance 2790, Micromass Quattro Ultima

## MS Conditions

Ion source:	ESI-
Source temp.:	150 °C
Gas cell:	$1.5 \times 10^{-3}$ mbar, 12 eV
Desolvation temp.:	350 °C
Cone gas flow:	150 L/hr
Drying gas flow:	600 L/hr
Cone voltage:	30 V

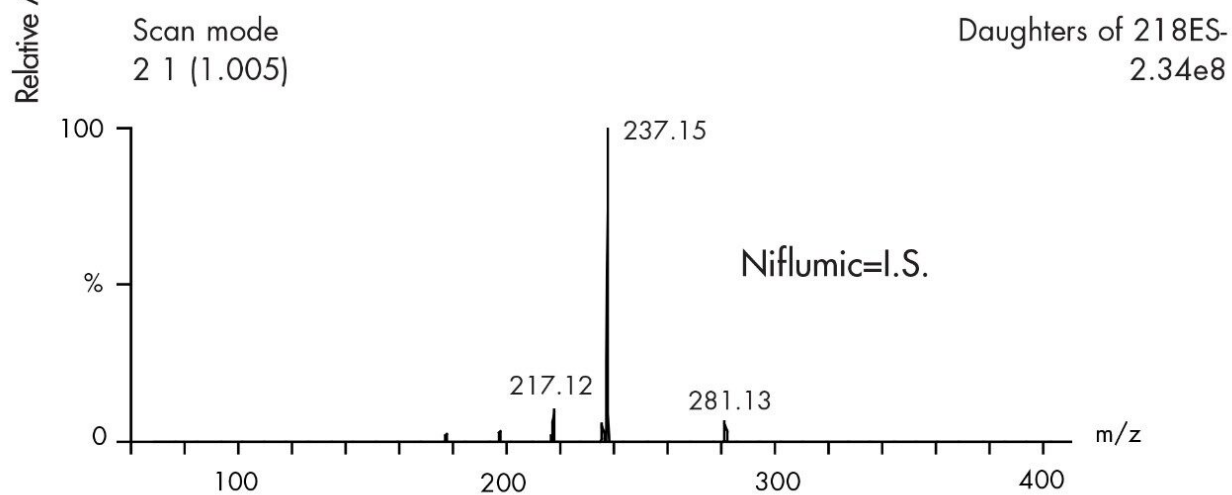
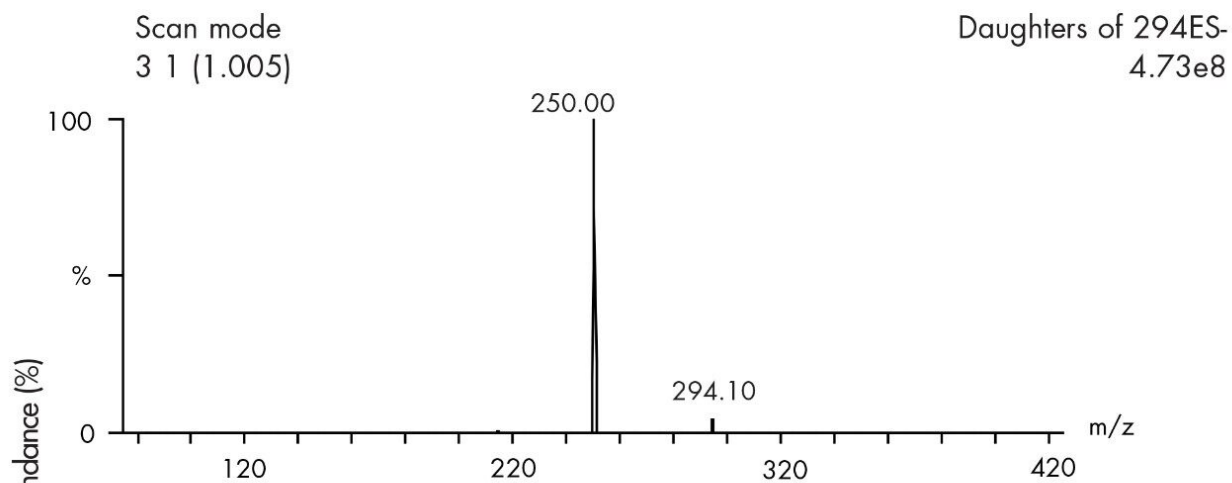
Oasis® MAX Extraction Method  
Oasis® MAX Extraction Plate, 10 mg/96-well  
Part Number 186000375



---

Results and Discussion

## CID mass spectra



---

## Featured Products

Alliance HPLC <<https://www.waters.com/514248>>

WA20738.037, June 2002

© 2021 Waters Corporation. All Rights Reserved.