

Diclofenac in Rat Plasma

Waters Corporation



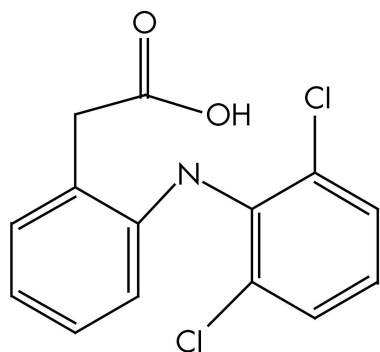
This is an Application Brief and does not contain a detailed Experimental section.

Abstract

This application brief highlights the analysis of diclofenac using XTerra MS C₁₈ columns.

Introduction

Diclofenac in rat plasma has been analyzed in this study.



Diclofenac

Experimental

HPLC Conditions

Column:	XTerra MS C ₁₈ 2.1 x 30 mm, 3.5 μm (p/n: 186000398)
Mobile phase A:	0.05% HCOOH
Mobile phase B:	ACN
Isocratic mobile phase composition:	60% A; 40% B
Flow rate:	0.2 mL/min
Injection volume:	50 μL
Detection:	MS ESI-

Instrument: Alliance 2790, Micromass Quattro Ultima

MS Conditions

Ion source: ESI-

Source temp.: 150 °C

Gas cell: 1.5×10^{-3} mbar, 12 eV

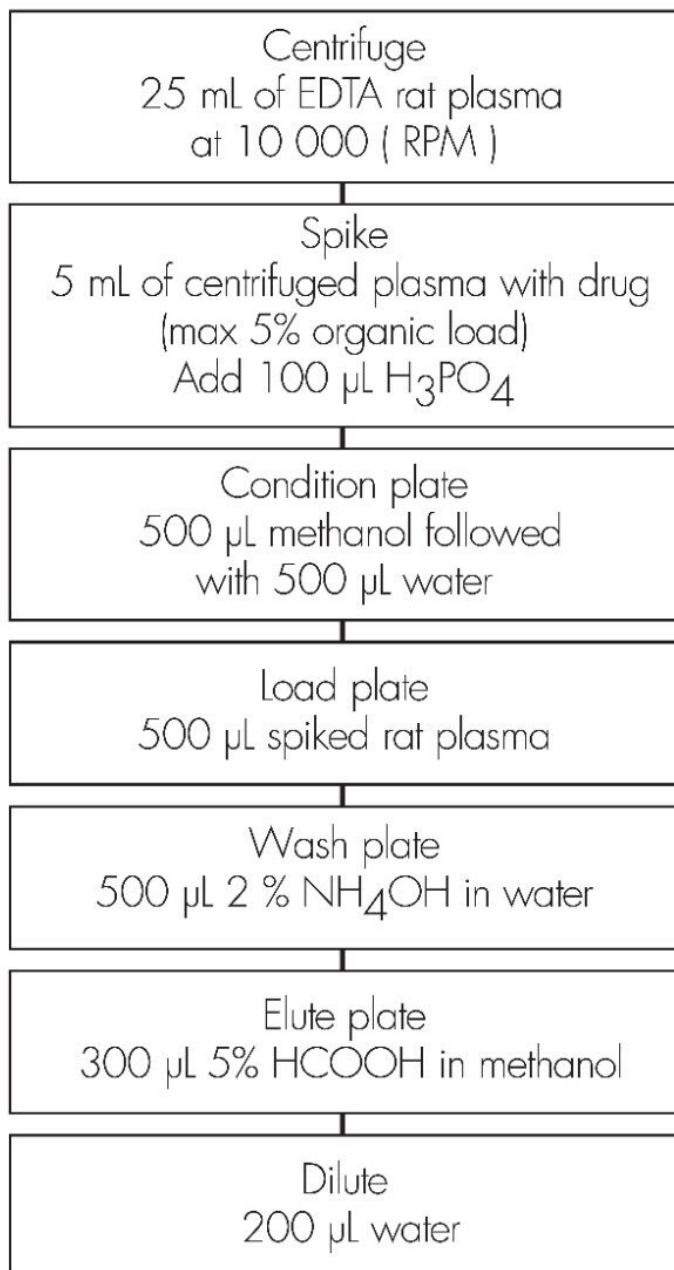
Desolvation temp.: 350 °C

Cone gas flow: 150 L/hr

Drying gas flow: 600 L/hr

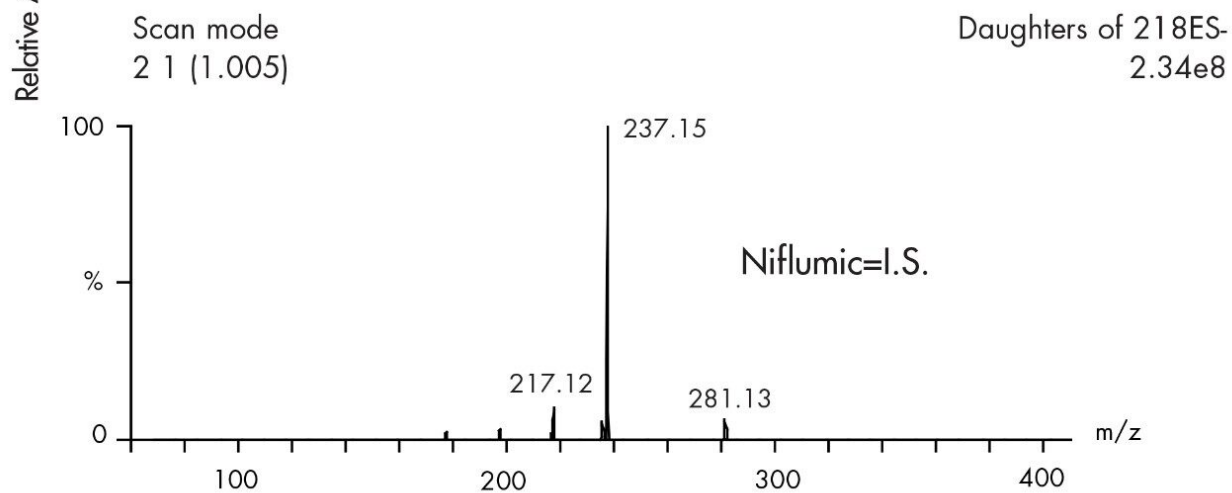
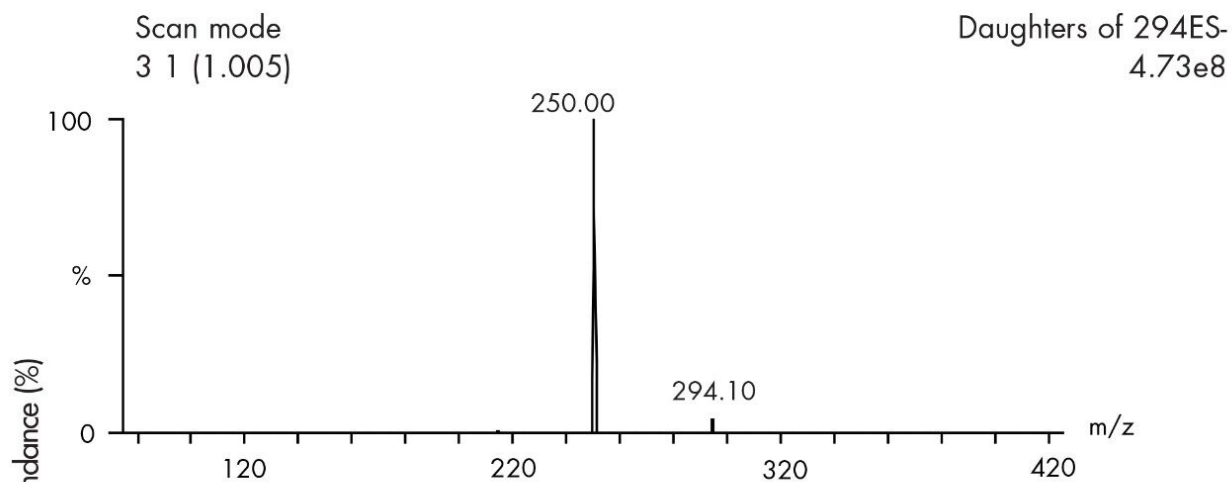
Cone voltage: 30 V

Oasis® MAX Extraction Method
Oasis® MAX Extraction Plate, 10 mg/96-well
Part Number 186000375



Results and Discussion

CID mass spectra



Featured Products

Alliance HPLC <<https://www.waters.com/514248>>

WA20738.037, June 2002

© 2021 Waters Corporation. All Rights Reserved.