

Diclofenac in Rat Plasma

Waters Corporation



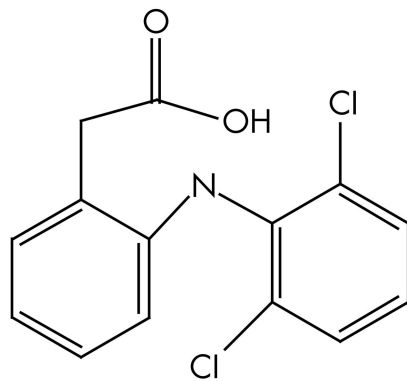
This is an Application Brief and does not contain a detailed Experimental section.

Abstract

This application brief highlights the analysis of diclofenac using XTerra MS C₁₈ columns.

Introduction

Diclofenac in rat plasma has been analyzed in this study.



Diclofenac

Experimental

HPLC Conditions

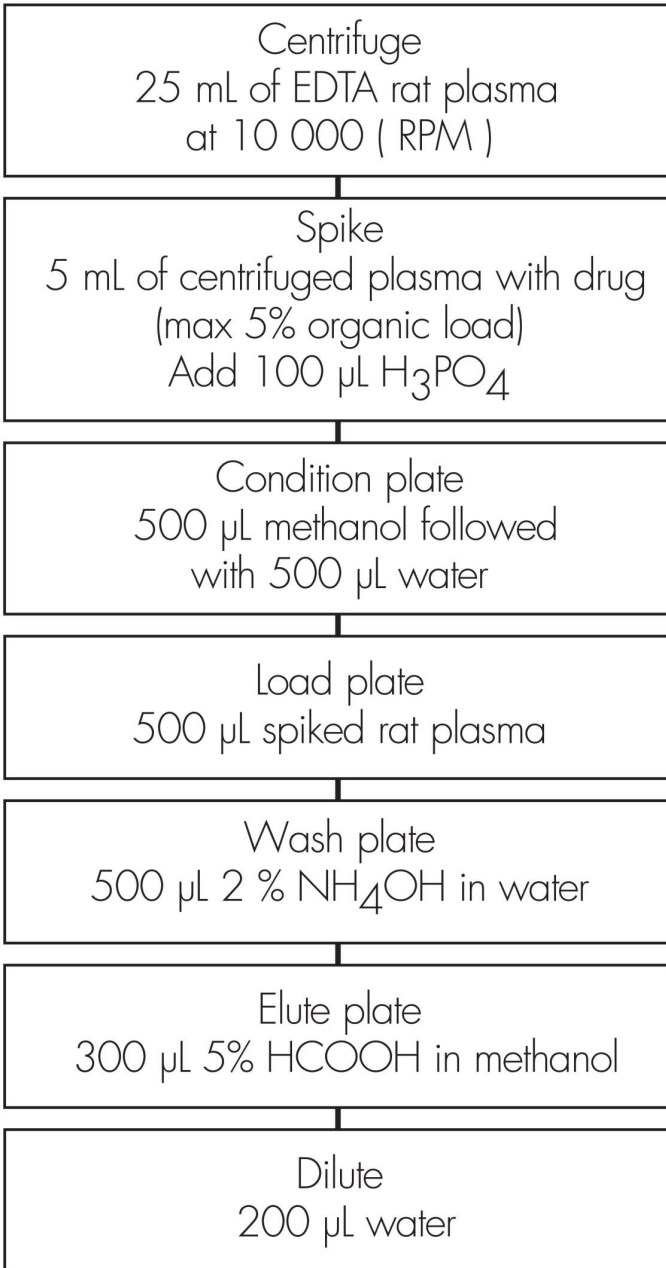
Column:	XTerra MS C ₁₈ 2.1 x 30 mm, 3.5 μm (p/n: 186000398)
Mobile phase A:	0.05% HCOOH
Mobile phase B:	ACN
Isocratic mobile phase composition:	60% A; 40% B
Flow rate:	0.2 mL/min
Injection volume:	50 μL

Detection: MS ESI-
Instrument: Alliance 2790, Micromass Quattro Ultima

MS Conditions

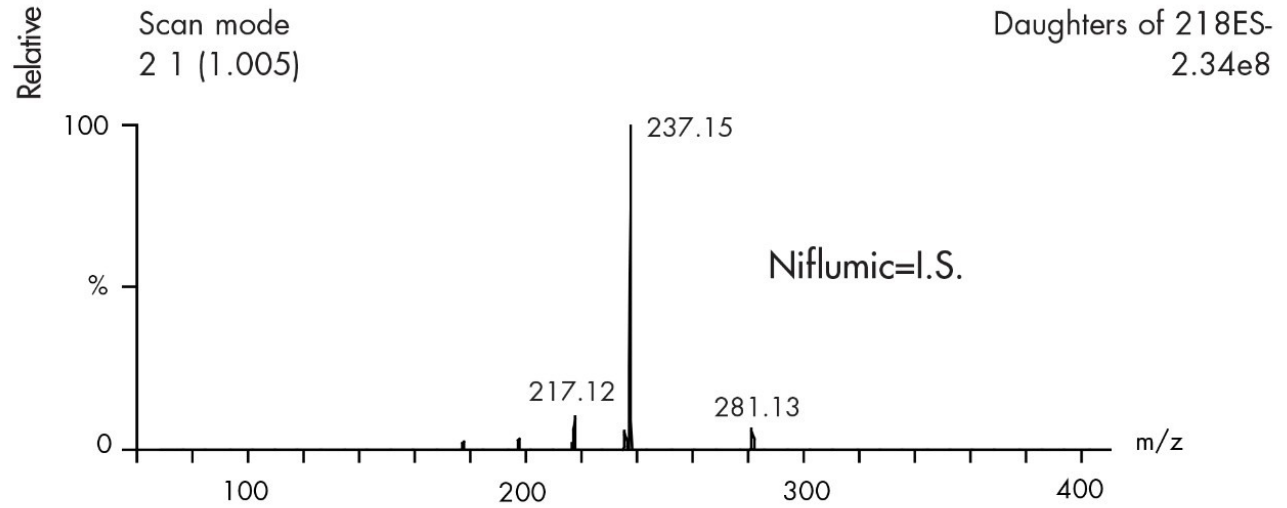
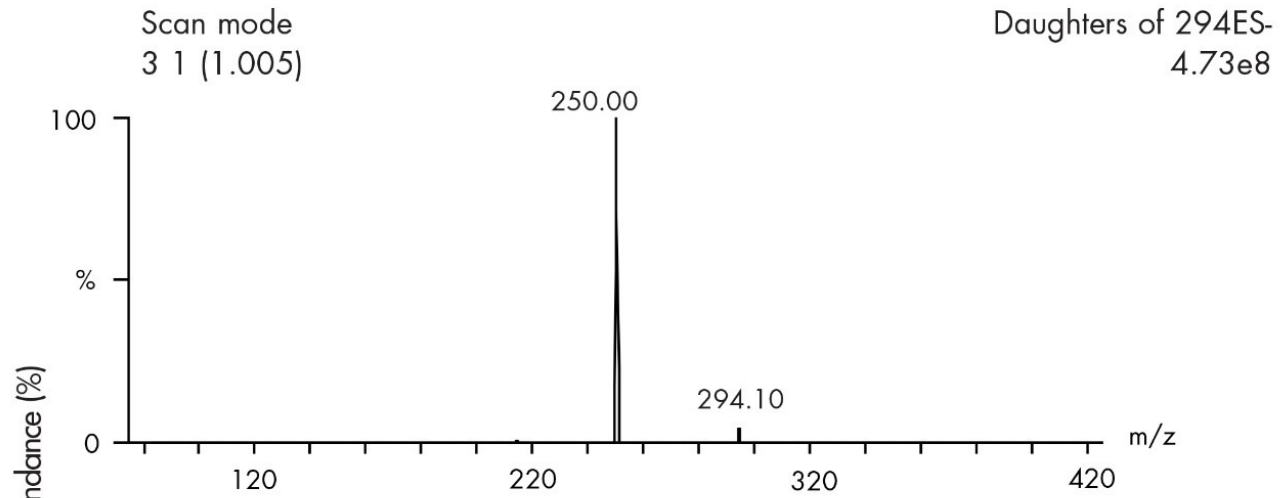
Ion source: ESI-
Source temp.: 150 °C
Gas cell: 1.5×10^{-3} mbar, 12 eV
Desolvation temp.: 350 °C
Cone gas flow: 150 L/hr
Drying gas flow: 600 L/hr
Cone voltage: 30 V

Oasis® MAX Extraction Method
Oasis® MAX Extraction Plate, 10 mg/96-well
Part Number 186000375



Results and Discussion

CID mass spectra



Featured Products

· [Alliance HPLC <https://www.waters.com/514248>](https://www.waters.com/514248)

WA20738.037, June 2002



© 2021 Waters Corporation. All Rights Reserved.