

Application Note

## GHB and GBL in Human Urine

---

Waters Corporation



This is an Application Brief and does not contain a detailed Experimental section.

---

### Abstract

This application brief highlights the analysis of GHB and GBL in human urine using XTerra MS C<sub>18</sub> Columns.

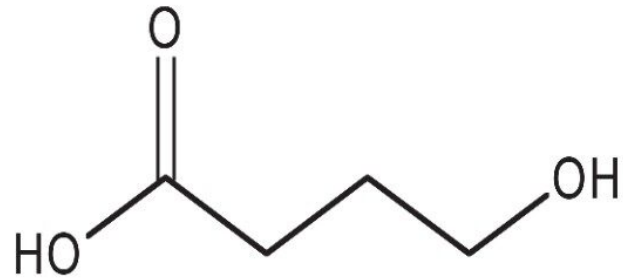
---

## Introduction

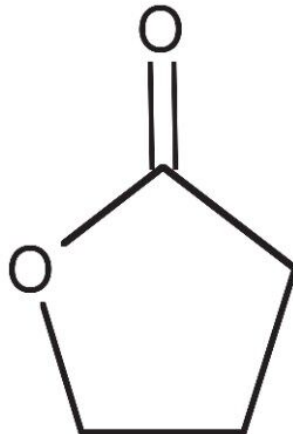
The compounds analyzed in this study are:

1. Gamma-Hydroxybutrate (GHB)
2. Gamma-Butyrolactone (GBL)

# Gamma-Hydroxybutrate (GHB)



# Gamma-Butyrolactone (GBL)



---

Experimental

## Conditions

|                                     |  |
|-------------------------------------|--|
| Column:                             | XTerra MS C <sub>18</sub> 2.1 x 250 mm, 5 µm |
| Part number:                        | 186000458                                    |
| Mobile phase A:                     | 0.1% HCOOH                                   |
| Mobile phase B:                     | MeOH   |
| Isocratic mobile phase composition: | 90%A; 10%B                                   |
| Flow rate:                          | 0.2 mL/min                                   |
| Injection volume:                   | 10 µl  |
| Detection:                          | MS ESI+                                      |
| Instrument:                         | Alliance 2695, Micromass ZQ                  |

Oasis<sup>®</sup> MCX Extraction Method  
Oasis<sup>®</sup> MCX Extraction Cartridge, 3 cc/60 mg  
Part Number 186000254

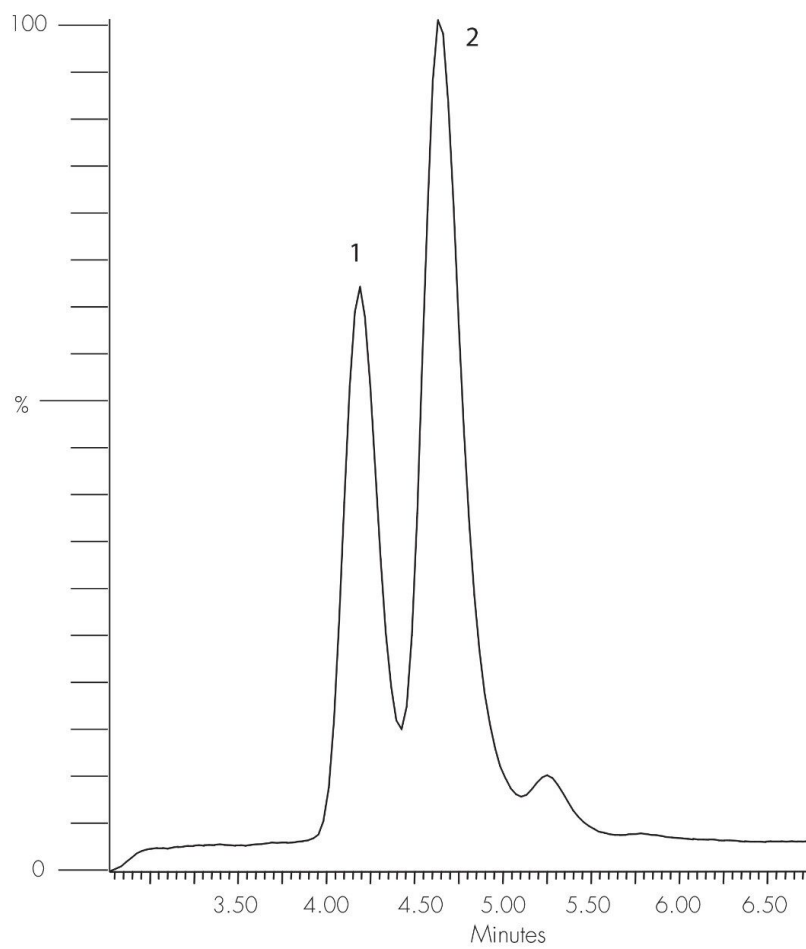
Condition/Equilibrate:  
1 mL methanol/1 mL water

Load:  
0.15 mL of urine @ pH 2

Elute:  
1 mL mobile phase

---

Results and Discussion



---

## Featured Products

Alliance HPLC System <<https://www.waters.com/534293>>

WA20738.060, June 2002

© 2021 Waters Corporation. All Rights Reserved.