

Note d'application

GHB and GBL in Human Urine

Waters Corporation



This is an Application Brief and does not contain a detailed Experimental section.

Abstract

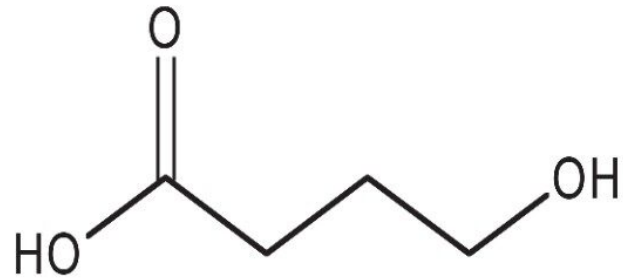
This application brief highlights the analysis of GHB and GBL in human urine using XTerra MS C₁₈ Columns.

Introduction

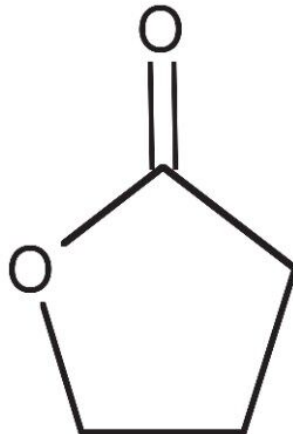
The compounds analyzed in this study are:

1. Gamma-Hydroxybutrate (GHB)
2. Gamma-Butyrolactone (GBL)

Gamma-Hydroxybutrate (GHB)



Gamma-Butyrolactone (GBL)



Experimental

Conditions

Column:	XTerra MS C ₁₈ 2.1 x 250 mm, 5 µm
Part number:	186000458
Mobile phase A:	0.1% HCOOH
Mobile phase B:	MeOH
Isocratic mobile phase composition:	90%A; 10%B
Flow rate:	0.2 mL/min
Injection volume:	10 µl
Detection:	MS ESI+
Instrument:	Alliance 2695, Micromass ZQ

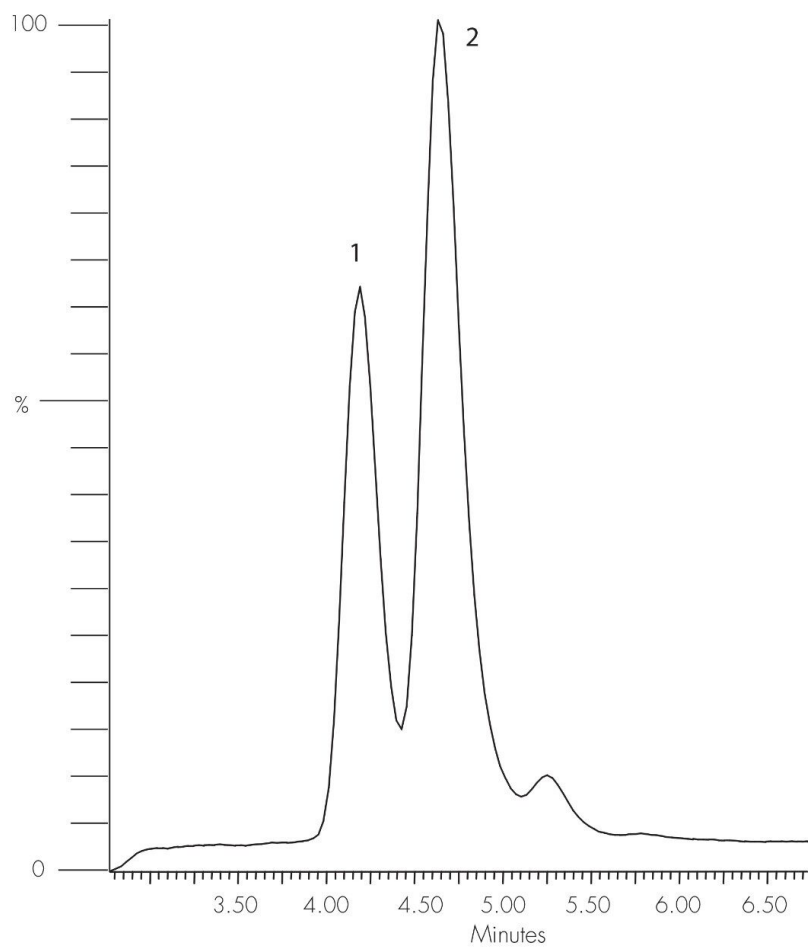
Oasis[®] MCX Extraction Method
Oasis[®] MCX Extraction Cartridge, 3 cc/60 mg
Part Number 186000254

Condition/Equilibrate:
1 mL methanol/1 mL water

Load:
0.15 mL of urine @ pH 2

Elute:
1 mL mobile phase

Results and Discussion



Featured Products

Alliance HPLC System <<https://www.waters.com/534293>>

WA20738.060, June 2002

© 2021 Waters Corporation. All Rights Reserved.