

Nota de aplicación

Ibuprofen

Waters Corporation



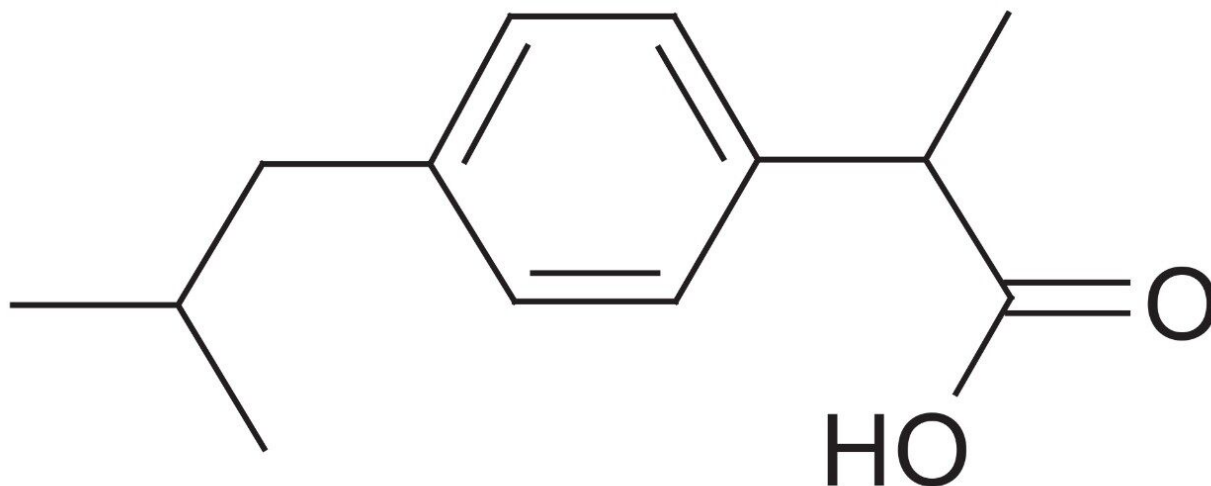
This is an Application Brief and does not contain a detailed Experimental section.

Abstract

This application brief highlights the analysis of ibuprofen using XTerra Columns.

Introduction

The compound analyzed in this study is ibuprofen.



Ibuprofen

Experimental

Conditions

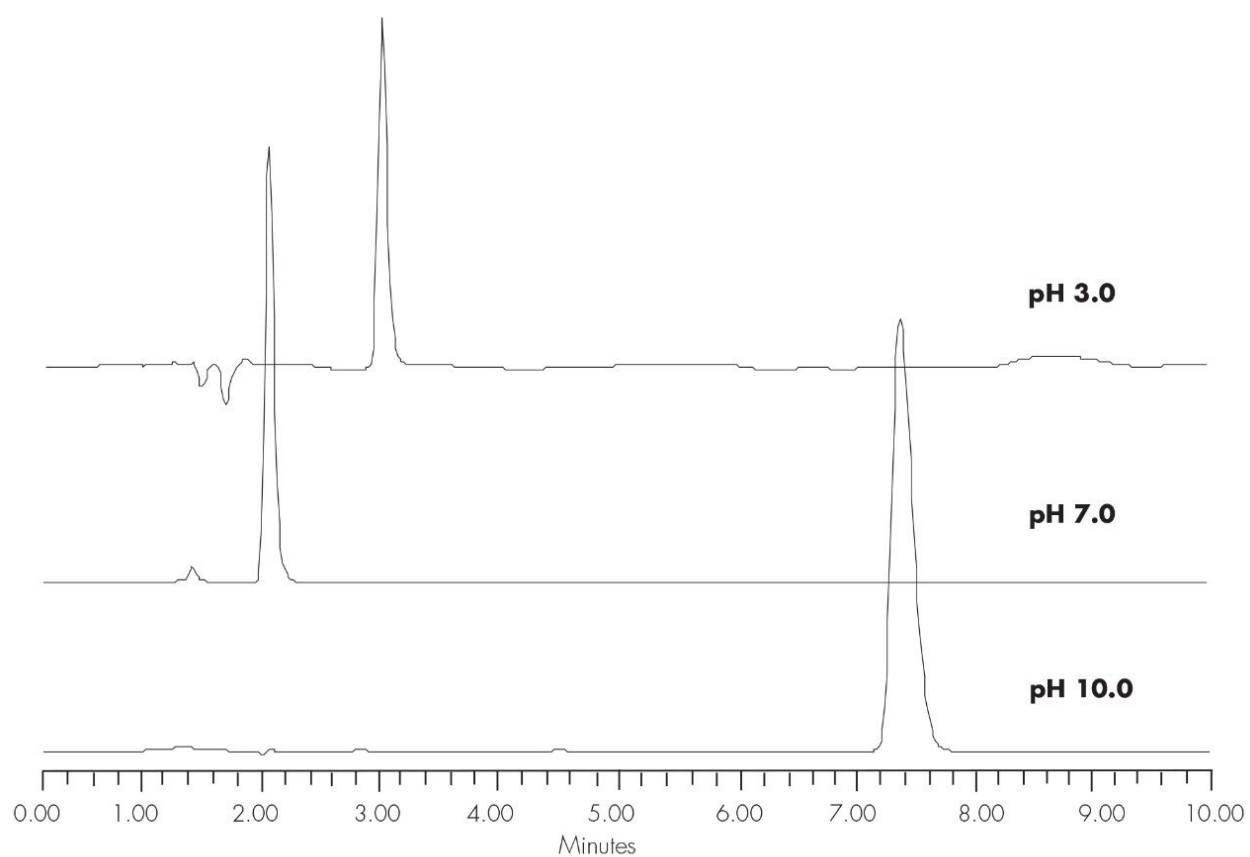
Column:	XTerra RP ₁₈ 4.6 x 150 mm, 5 μm
Part number:	186000492
Mobile phase:	pH 3.0: H ₂ O/ACN/100 mM NH ₄ COOH, pH 3.0 20:70:10

pH 7.0: H₂O/ACN/100 mM NH₄HCO₃, pH 7.0
50:40:10

pH 10.0 H₂O/ACN/100 mM NH₄HCO₃, pH 10.0
67:23:10

Flow rate:	1.0 mL/min
Injection volume:	5 µL of 250 µg/mL
Temperature:	30 °C
Detection:	UV @ 228 nm
Instrument:	Alliance 2695, 2996 PDA
Mobile Phase pH	USP Tailing
3.0	1.17
7.0	1.25
10.0	1.39

Results and Discussion



Featured Products

Alliance HPLC System <<https://www.waters.com/534293>>

2998 Photodiode Array (PDA) Detector <<https://www.waters.com/1001362>>

WA20738.062, June 2002

© 2021 Waters Corporation. All Rights Reserved.