

Waters™

應用手冊

Ibuprofen

Waters Corporation



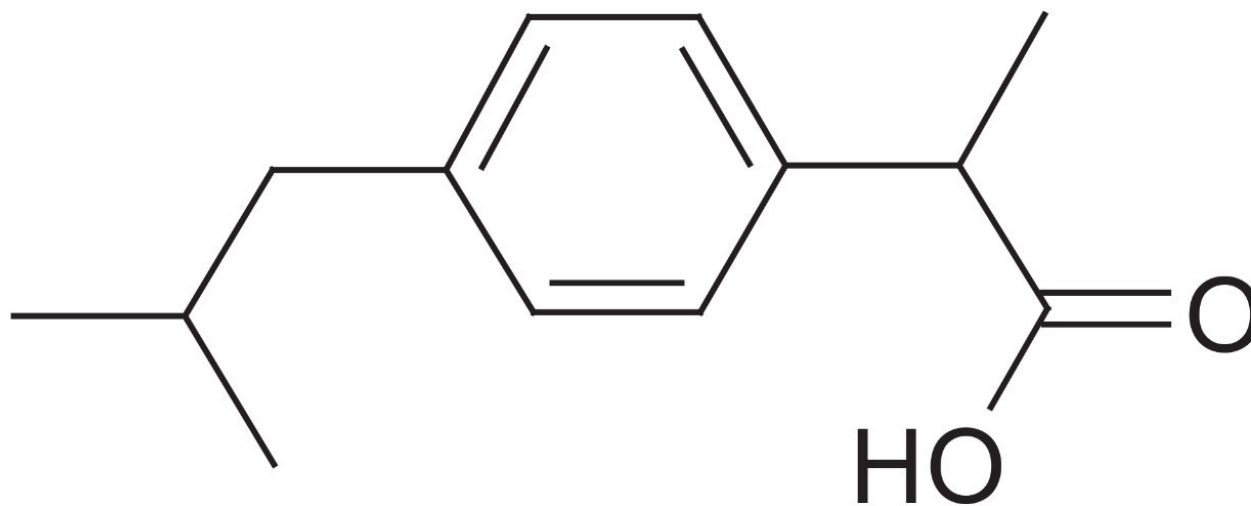
This is an Application Brief and does not contain a detailed Experimental section.

Abstract

This application brief highlights the analysis of ibuprofen using XTerra Columns.

Introduction

The compound analyzed in this study is ibuprofen.



Ibuprofen

Experimental

Conditions

Column:	XTerra RP ₁₈ 4.6 x 150 mm, 5 μm
Part number:	186000492
Mobile phase:	pH 3.0: H ₂ O/ACN/100 mM NH ₄ COOH, pH 3.0 20:70:10

pH 7.0: H₂O/ACN/100 mM NH₄HCO₃, pH 7.0
50:40:10

pH 10.0 H₂O/ACN/100 mM NH₄HCO₃, pH 10.0
67:23:10

Flow rate: 1.0 mL/min

Injection volume: 5 µL of 250 µg/mL

Temperature: 30 °C

Detection: UV @ 228 nm

Instrument: Alliance 2695, 2996 PDA

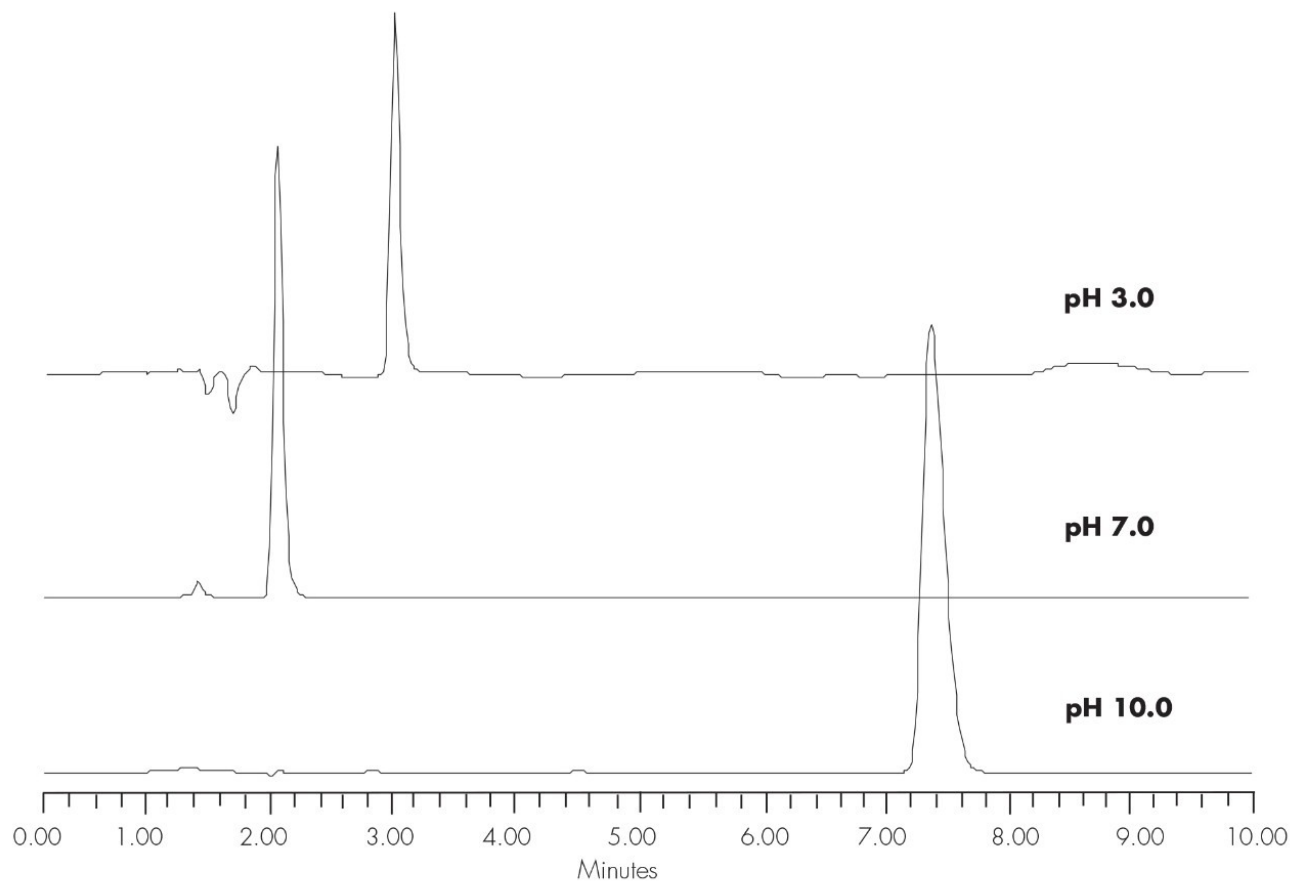
Mobile Phase pH USP Tailing

3.0 1.17

7.0 1.25

10.0 1.39

Results and Discussion



Featured Products

- [Alliance HPLC System <https://www.waters.com/534293>](https://www.waters.com/534293)
- [2998 Photodiode Array \(PDA\) Detector <https://www.waters.com/1001362>](https://www.waters.com/1001362)

WA20738.062, June 2002



© 2021 Waters Corporation. All Rights Reserved.