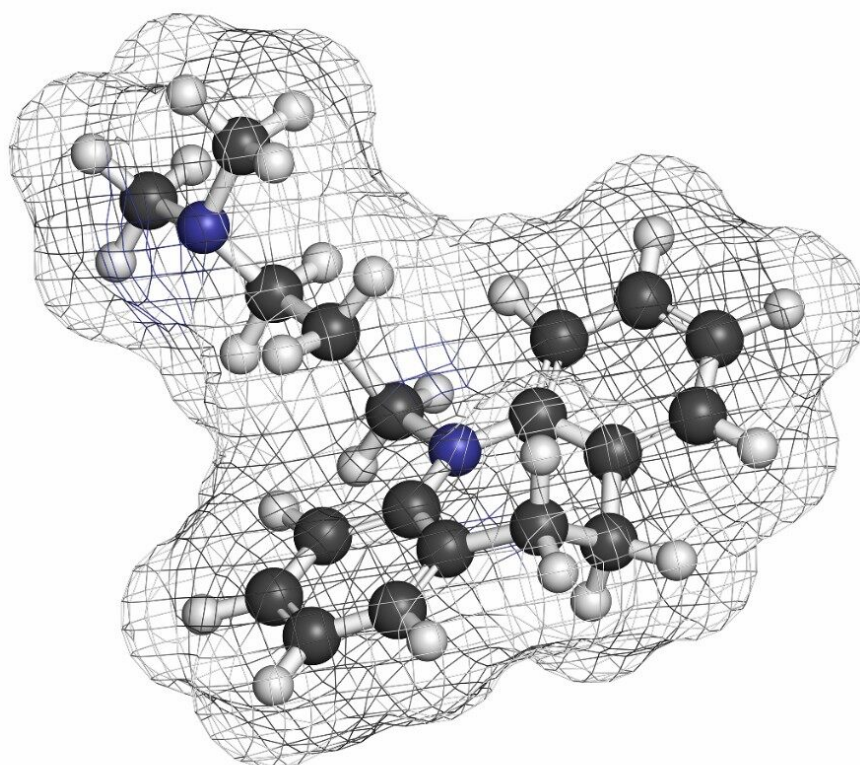


Imipramine

Waters Corporation



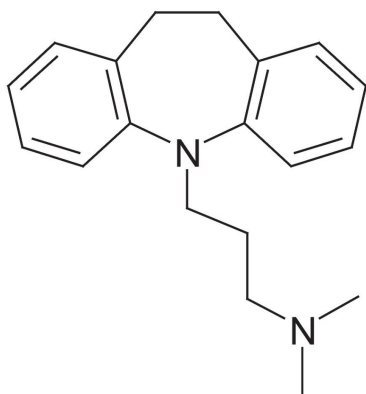
This is an Application Brief and does not contain a detailed Experimental section.

Abstract

This application brief highlights the analysis of imipramine using XTerra Columns.

Introduction

The compound analyzed in this study is imipramine.



Imipramine

Experimental

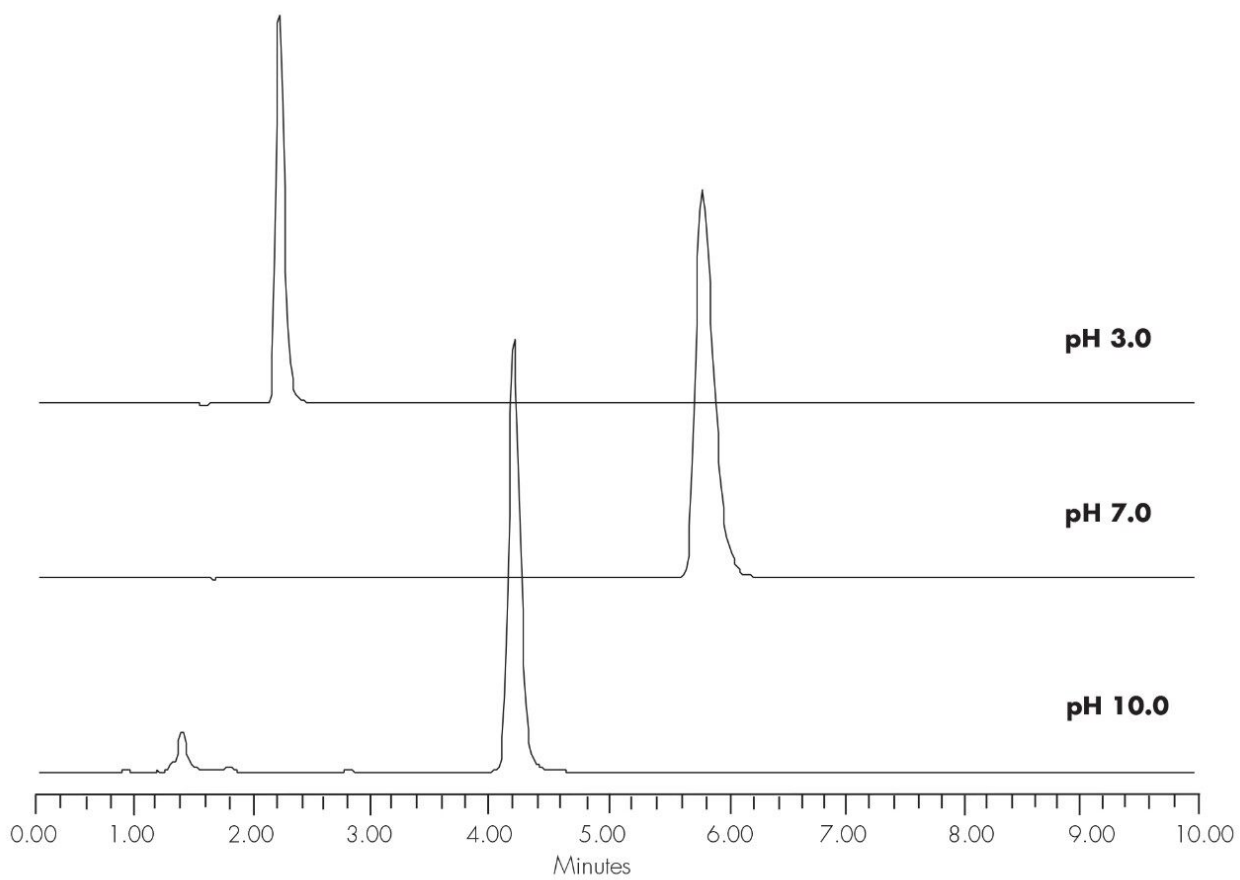
Conditions

Column:	XTerra RP ₁₈ 4.6 x 150 mm, 5 μm
Part number:	186000492
Mobile phase:	pH 3.0: H ₂ O/ACN/100 mM NH ₄ COOH, pH 3.0 40:50:10 pH 7.0: H ₂ O/ACN/100 mM NH ₄ HCO ₃ , pH 7.0 22:68:10 pH 10.0 H ₂ O/ACN/100 mM NH ₄ HCO ₃ , pH 10.0 90:0:10

Flow rate: 1.0 mL/min
Injection volume: 5 µL of 250 µg/mL
Temperature: 30 °C
Detection: UV @ 254 nm
Instrument: Alliance 2695, 2996 PDA

Mobile Phase pH	USP Tailing
3.0	1.24
7.0	1.49
10.0	1.19

Results and Discussion



Featured Products

Alliance HPLC System <<https://www.waters.com/534293>>

2998 Photodiode Array (PDA) Detector <<https://www.waters.com/1001362>>

WA20738.063, June 2002

© 2021 Waters Corporation. All Rights Reserved.