

Methamphetamines

Waters Corporation



For forensic toxicology use only.

This is an Application Brief and does not contain a detailed Experimental section.

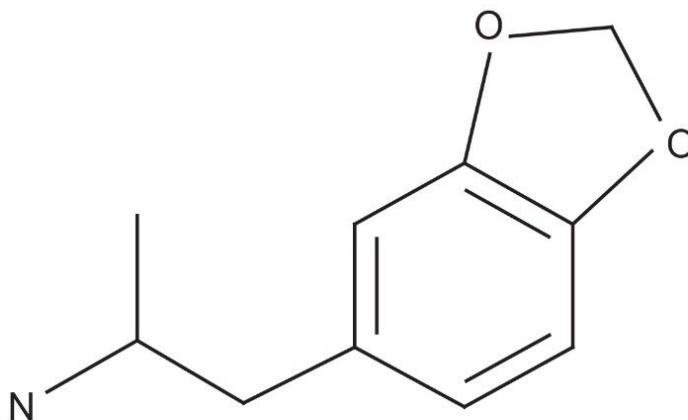
Abstract

This application brief highlights the analysis of methamphetamines using XTerra Columns.

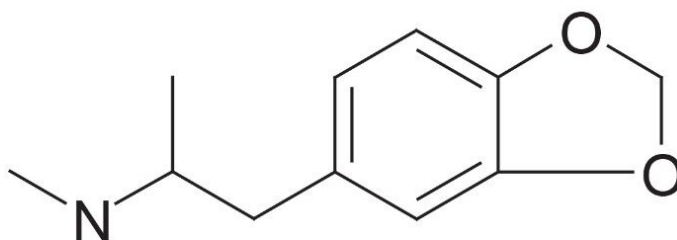
Introduction

The compounds analyzed in this study are:

1. 3,4-methylenedioxyamphetamine (MDA)
2. 3,4-methylenedioxymethamphetamine (MDMA)



3,4-Methylenedioxyamphetamine (MDA)



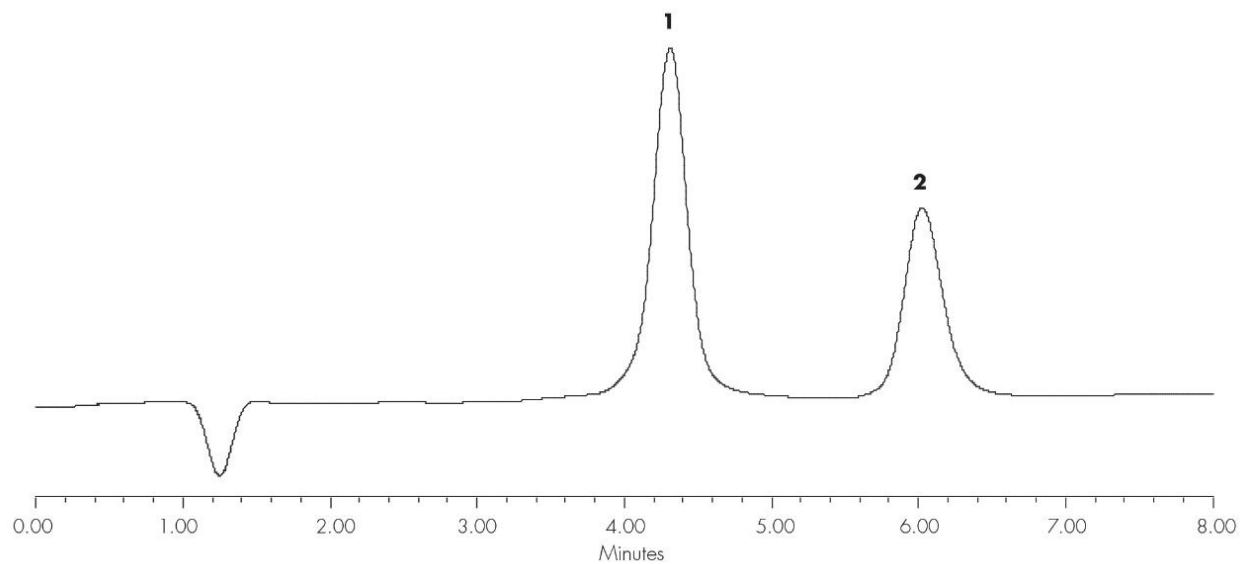
3,4-Methylenedioxymethamphetamine (MDMA)

Experimental

Conditions

| | |
|--|--|
| Column: | XTerra RP ₁₈ 3.0 x 100 mm, 3.5 μm |
| Part number: | 186000420 |
| Mobile phase A: | 5 mM NH ₄ HCO ₃ , pH 9.6 |
| Mobile phase B: | ACN |
| Flow rate: | 0.6 mL/min |
| Isocratic mobile phase composition: | 80%A; 20%B |
| Injection volume: | 5 μL |
| Sample concentration: | 40 pg/μL |
| Temperature: | 40 °C |
| Detection: | Fluorescence 280ex 326em Gain 100 TC = 1s |
| Instrument: | Alliance 2690, 2475 |
| Compounds | USP Tailing |
| 3,4-methylenedioxyamphetamine (MDA) | 0.95 |
| 3,4-methylenedioxymethamphetamine (MDMA) | 1.10 |

Results and Discussion



Featured Products

Alliance HPLC System <<https://www.waters.com/534293>>

2475 Fluorescence (FLR) Detector <<https://www.waters.com/514434>>

WA20738.065, June 2002