

## Omeprazole in Rat Plasma

---

Waters Corporation



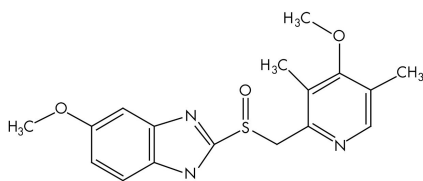
This is an Application Brief and does not contain a detailed Experimental section.

### Abstract

This application brief highlights the analysis of omeprazole using XTerra MS C<sub>18</sub> columns.

## Introduction

Omeprazole in rat plasma has been analyzed in this study.



Omeprazole

## Experimental

### HPLC Conditions

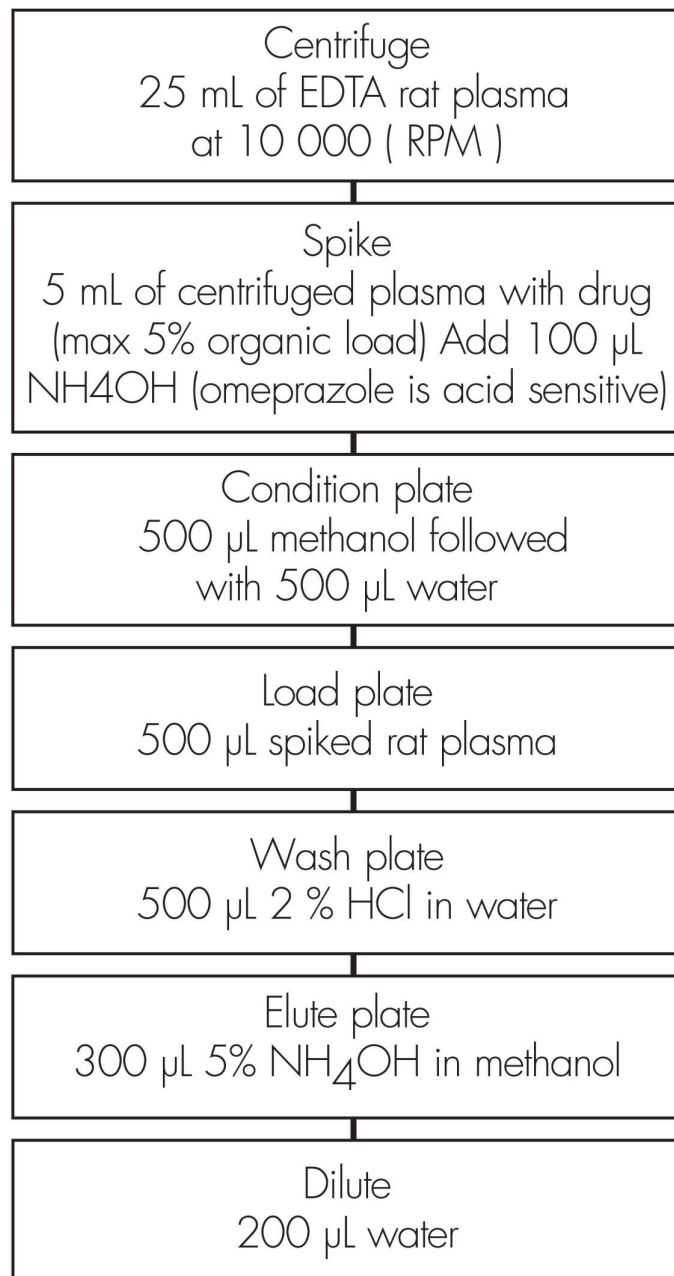
Column:	XTerra MS C <sub>18</sub> 2.1 x 30 mm, 3.5 μm (p/n: 186000398)
Mobile phase A:	1.0% NH <sub>4</sub> OH
Mobile phase B:	ACN
Isocratic mobile phase composition:	50% A; 50% B
Flow rate:	0.2 mL/min
Injection volume:	20 μL
Detection:	MS ESI+
Instrument:	Alliance 2690, Micromass Quattro Ultima

### MS Conditions

---

Ion source:	ESI+
Source temp.:	150 °C
Gas cell:	1.5e <sup>-3</sup> mbar, 10 eV
Desolvation temp.:	350 °C
Cone gas flow:	150 L/hr
Drying gas flow:	600 L/hr
Cone voltage:	30 V

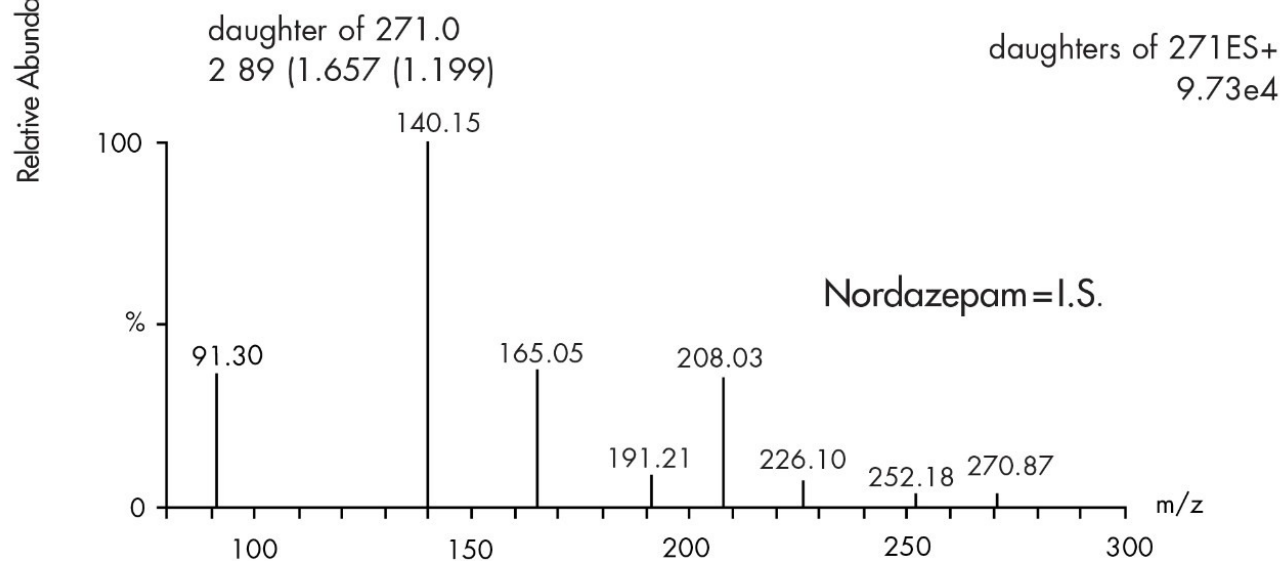
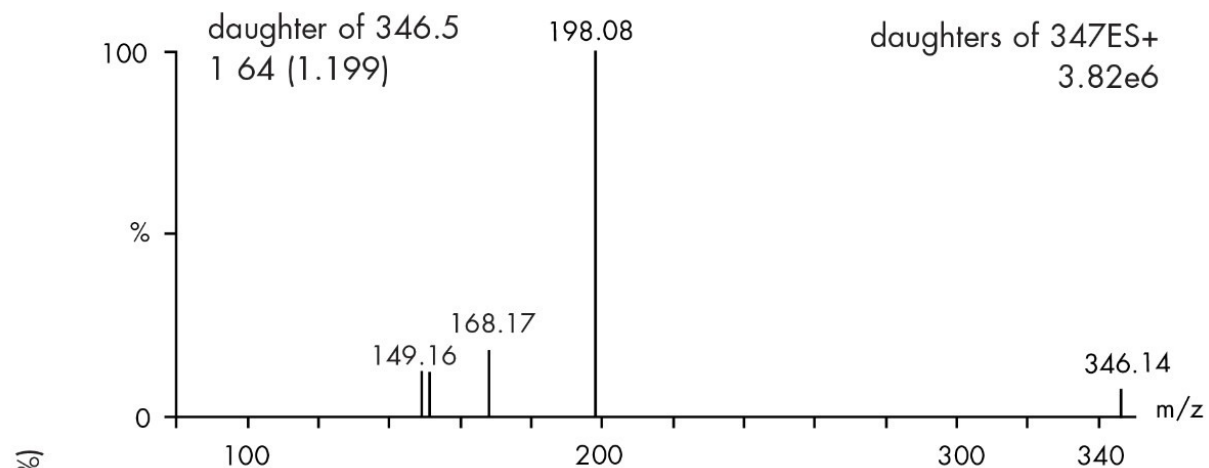
Oasis® MCX Extraction Method  
Oasis® MCX Extraction Plate, 10 mg/96-well  
Part Number 186000259



## Results and Discussion

---

### CID mass spectra



### Featured Products

· [Alliance HPLC <https://www.waters.com/514248>](https://www.waters.com/514248)

WA20738.082, June 2002



© 2021 Waters Corporation. All Rights Reserved.