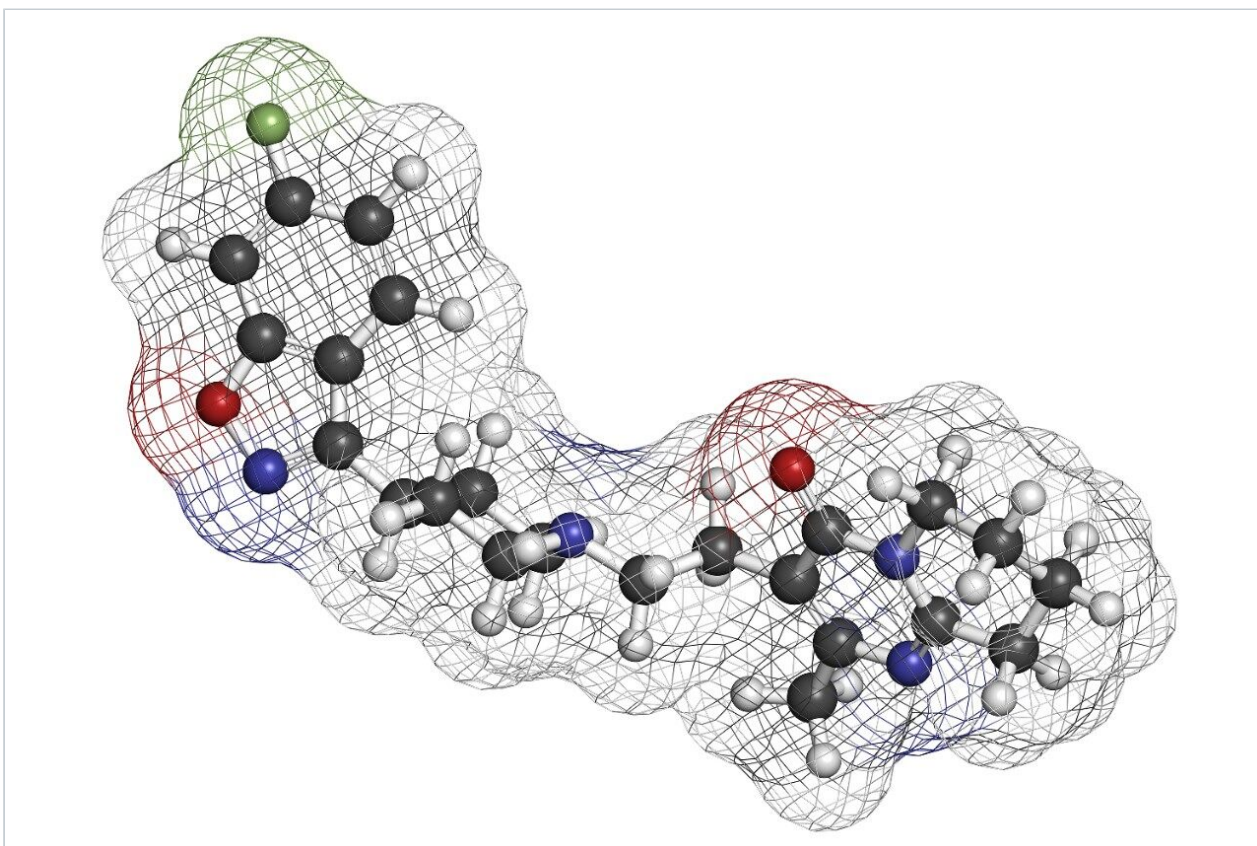


Risperidone pH 2.5 - LC-MS

Waters Corporation



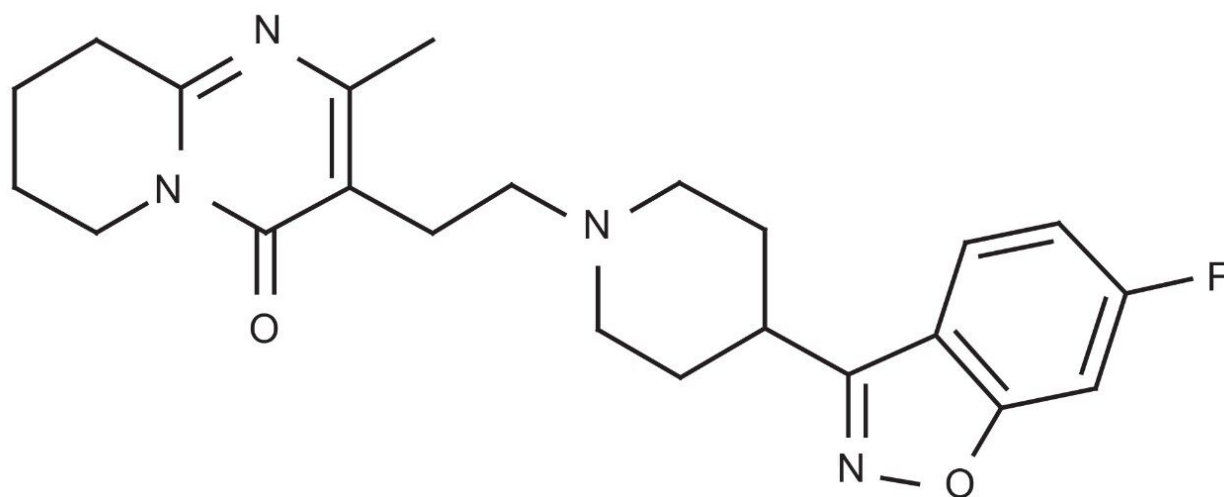
This is an Application Brief and does not contain a detailed Experimental section.

Abstract

This application brief demonstrates analysis of risperidone by LC-MS.

Introduction

The compound analyzed in this study is risperidone.



Risperidone

Experimental

Conditions

| | |
|-----------------|---|
| Column: | Xterra MS C ₁₈ 2.1 x 30 mm, 3.5 μm |
| Part number: | 186000398 |
| Mobile phase A: | 0.1% HCOOH in H ₂ O |
| Mobile phase B: | 0.1% HCOOH in ACN |

| | |
|-------------------------------------|---------------------------------|
| Flow rate: | 0.2 mL/min to MS |
| Isocratic mobile phase composition: | 88% A; 12% B |
| Injection volume: | 20 μ L of 100 pg/ μ L |
| Temperature: | Ambient |
| Detection: | MS ESI ⁺ , SIR 411.3 |
| Instrument: | Alliance 2795 HT, Micromass ZQ |

MS Conditions

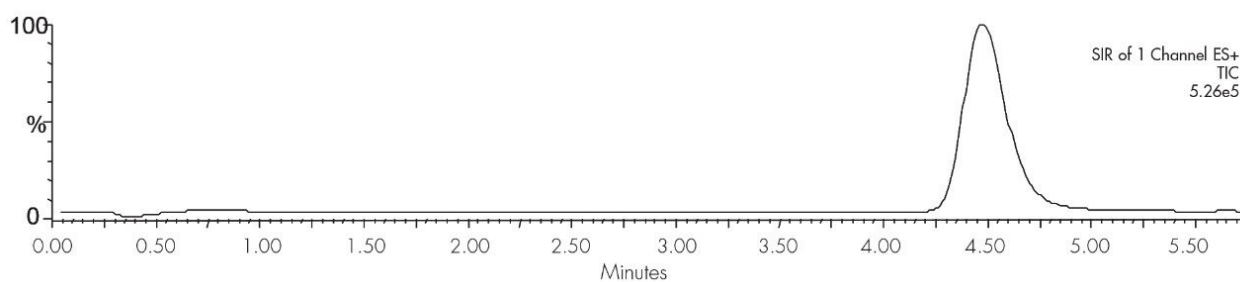
Micromass ZQ ESI⁺

| | |
|------------------------------|-----|
| Capillary (kV): | 3.0 |
| Cone (V): | 30 |
| Extractor: | 3.0 |
| RF lens: | 0.5 |
| Source temp.: | 150 |
| Desolvation temp.: | 350 |
| Cone gas flow (L/Hr): | 60 |
| Desolvation gas flow (L/Hr): | 500 |
| LM resolution: | 15 |
| HM resolution: | 15 |

Ion energy: 1.0

Multiplier (V): 650

Results and Discussion



Featured Products

Alliance HPLC System <<https://www.waters.com/534293>>

WA20738.098, June 2002