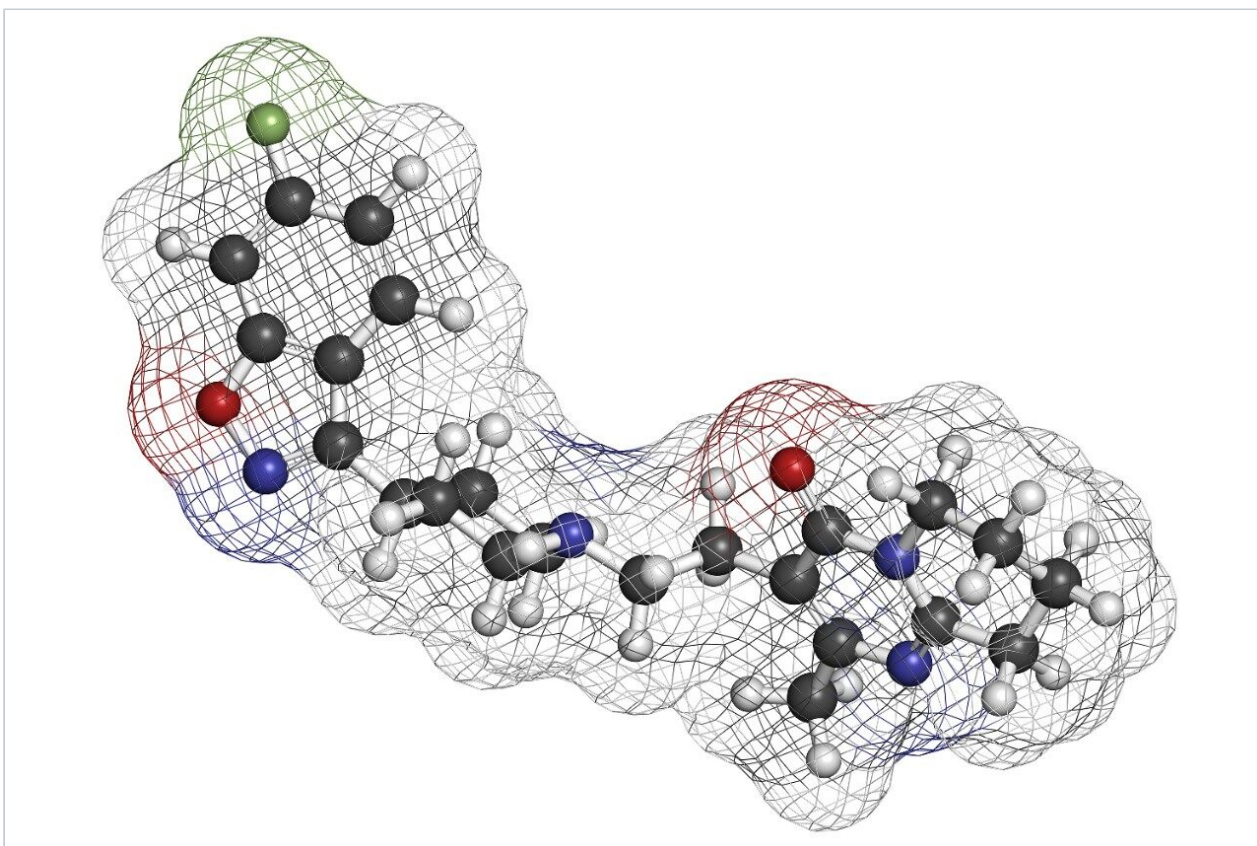




Risperidone pH 2.5 - LC-MS

Waters Corporation



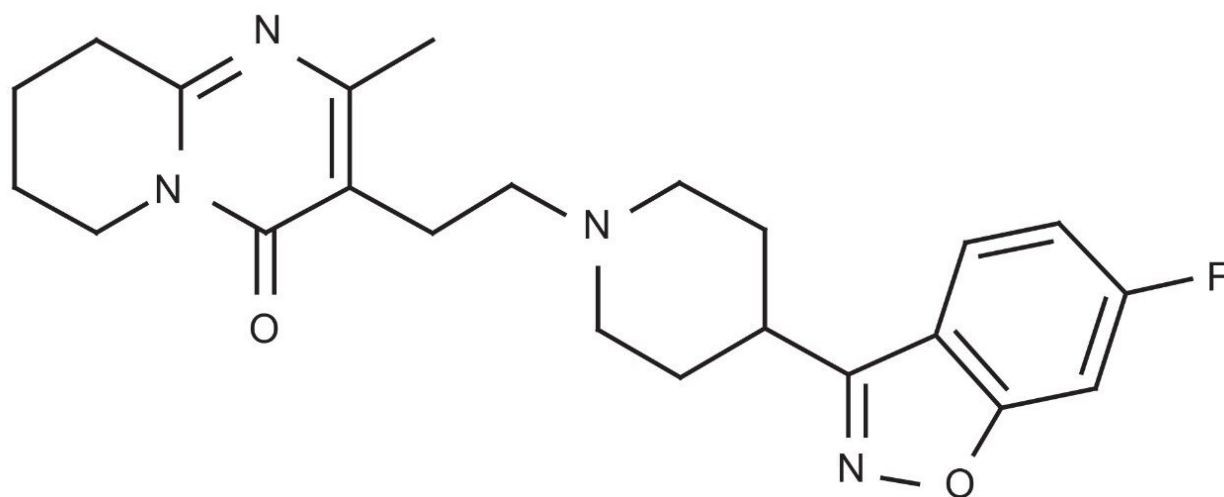
This is an Application Brief and does not contain a detailed Experimental section.

Abstract

This application brief demonstrates analysis of risperidone by LC-MS.

Introduction

The compound analyzed in this study is risperidone.



Risperidone

Experimental

Conditions

Column:	Xterra MS C ₁₈ 2.1 x 30 mm, 3.5 μm
Part number:	186000398
Mobile phase A:	0.1% HCOOH in H ₂ O
Mobile phase B:	0.1% HCOOH in ACN

Flow rate:	0.2 mL/min to MS
Isocratic mobile phase composition:	88% A; 12% B
Injection volume:	20 μ L of 100 pg/ μ L
Temperature:	Ambient
Detection:	MS ESI ⁺ , SIR 411.3
Instrument:	Alliance 2795 HT, Micromass ZQ

MS Conditions

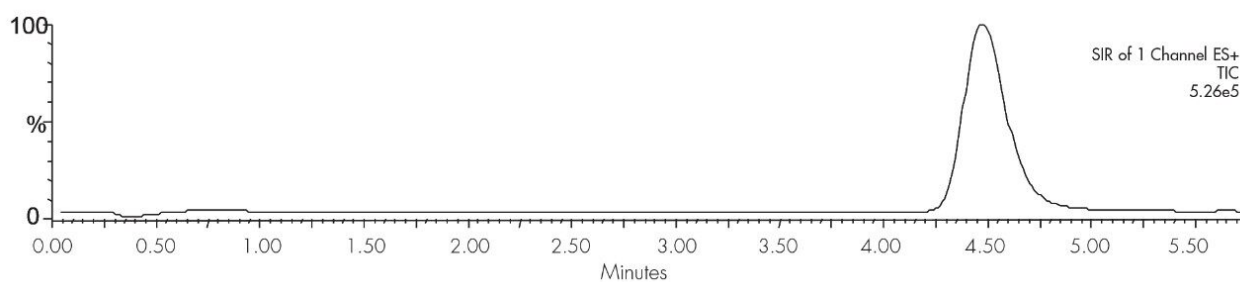
Micromass ZQ ESI⁺

Capillary (kV):	3.0
Cone (V):	30
Extractor:	3.0
RF lens:	0.5
Source temp.:	150
Desolvation temp.:	350
Cone gas flow (L/Hr):	60
Desolvation gas flow (L/Hr):	500
LM resolution:	15
HM resolution:	15

Ion energy: 1.0

Multiplier (V): 650

Results and Discussion



Featured Products

Alliance HPLC System <<https://www.waters.com/534293>>

WA20738.098, June 2002