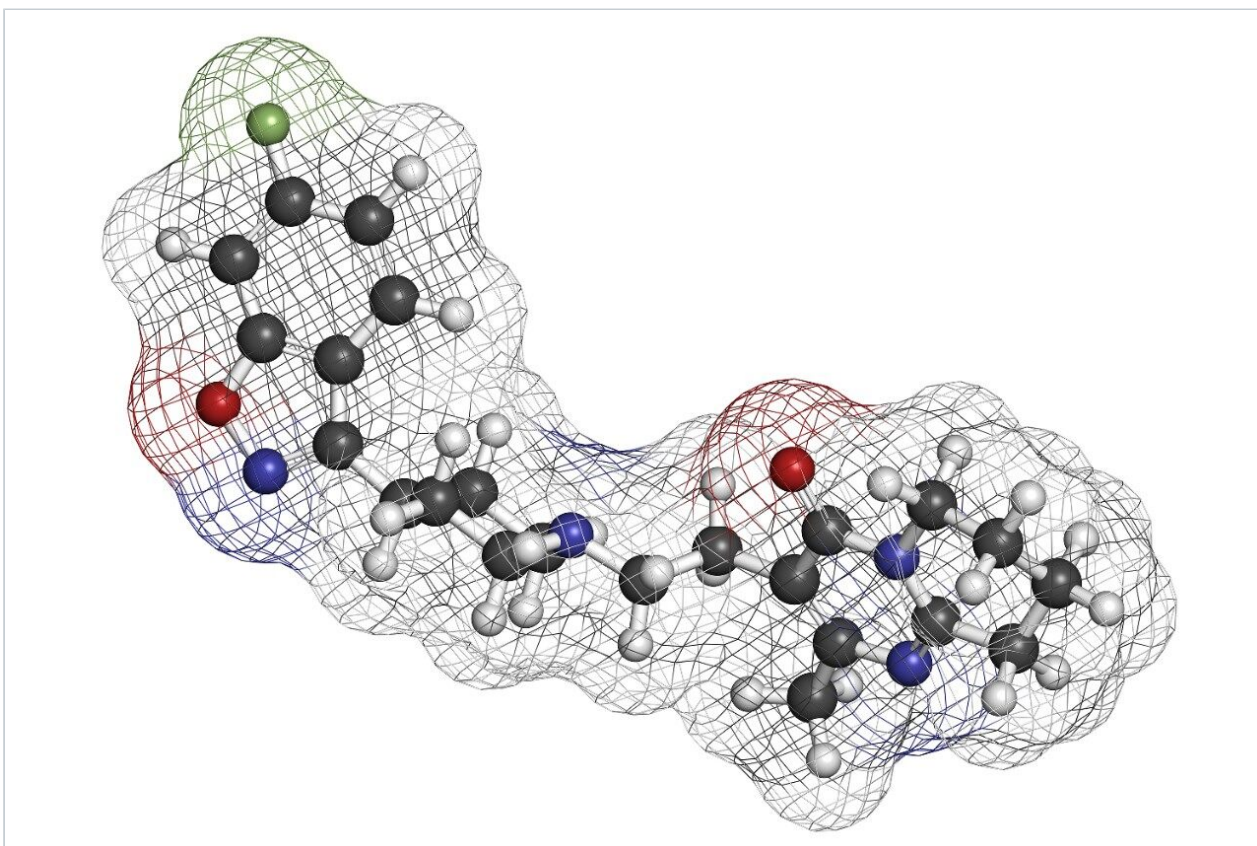


## Risperidone - pH 9.5, LC-MS

---

Waters Corporation



This is an Application Brief and does not contain a detailed Experimental section.

---

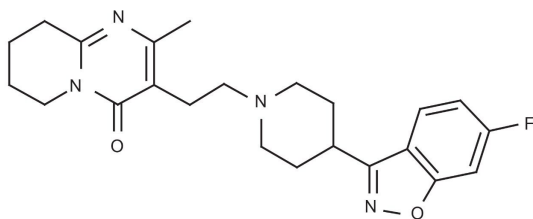
### Abstract

This application brief demonstrates analysis of risperidone.

---

## Introduction

The compound analyzed in this study is risperidone.



Risperidone

---

## Experimental

### Conditions

Column:	Xterra MS C <sub>18</sub> 2.1 x 30 mm, 3.5 μm
Part number:	186000398
Mobile phase A:	0.1% NH <sub>4</sub> OH in H <sub>2</sub> O
Mobile phase B:	0.1% NH <sub>4</sub> OH in ACN
Flow rate:	0.2 mL/min to MS
Isocratic mobile phase composition:	67% A; 33% B
Injection volume:	20 μL of 100 pg/μL
Temperature:	Ambient

Detection: MS ESI<sup>+</sup>, SIR 411.3

Instrument: Alliance 2795 HT, Micromass ZQ

## MS Conditions

Micromass ZQ ESI<sup>+</sup>

Capillary (kV): 3.0

Cone (V): 30

Extractor: 3.0

RF lens: 0.5

Source temp.: 150

Desolvation temp.: 350

Cone gas flow (L/Hr): 60

Desolvation gas flow (L/Hr): 500

LM resolution: 15

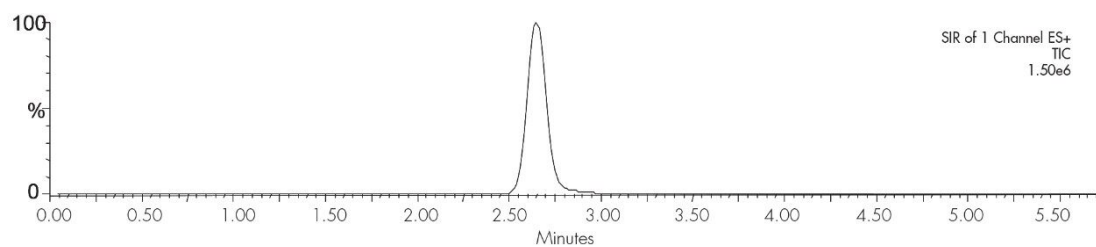
HM resolution: 15

Ion energy: 1.0

Multiplier (V): 650

---

## Results and Discussion



---

## Featured Products

Alliance HPLC System <<https://www.waters.com/534293>>

WA20738.100, June 2002