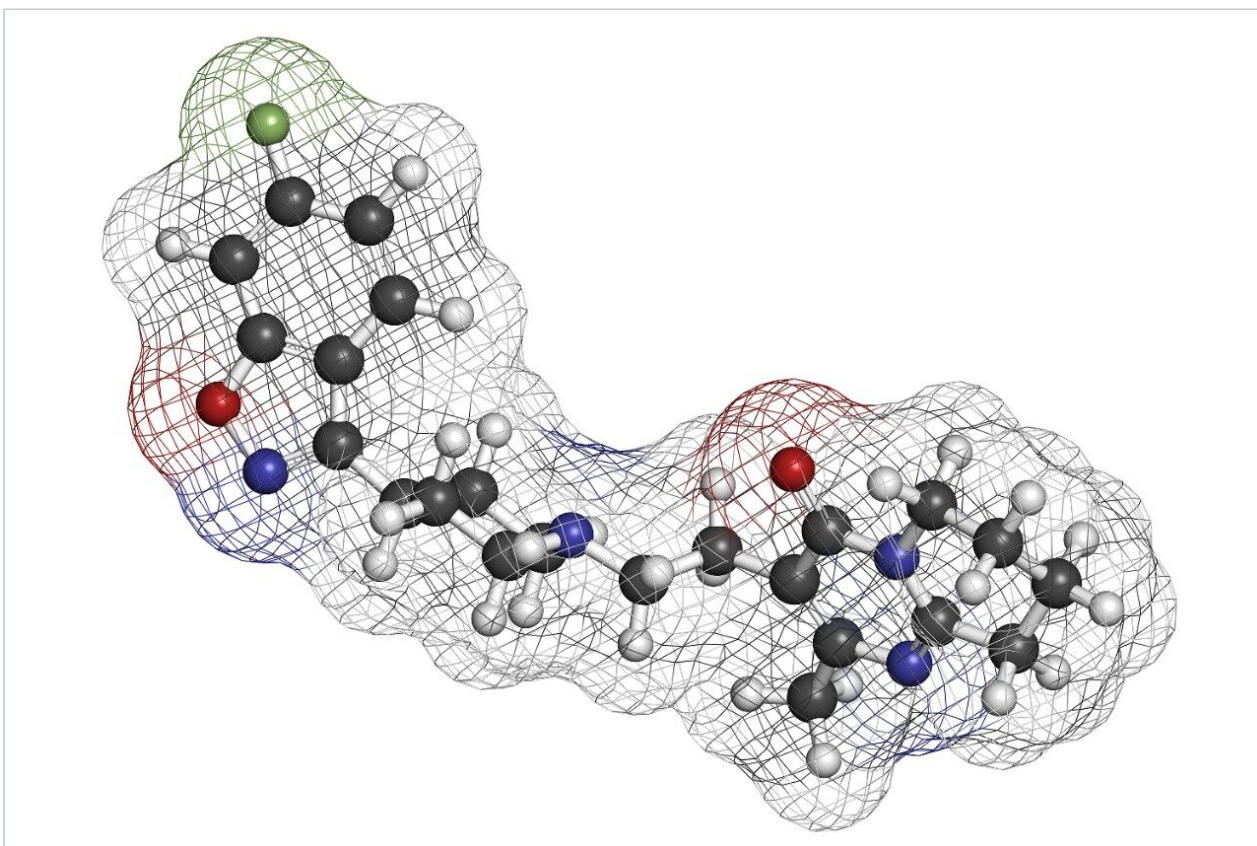




Risperidone - pH 9.5, LC-MS

Waters Corporation



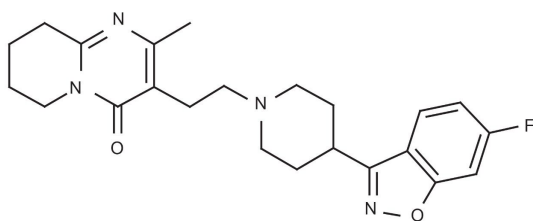
This is an Application Brief and does not contain a detailed Experimental section.

Abstract

This application brief demonstrates analysis of risperidone.

Introduction

The compound analyzed in this study is risperidone.



Risperidone

Experimental

Conditions

Column:	Xterra MS C ₁₈ 2.1 x 30 mm, 3.5 μm
Part number:	186000398
Mobile phase A:	0.1% NH ₄ OH in H ₂ O
Mobile phase B:	0.1% NH ₄ OH in ACN
Flow rate:	0.2 mL/min to MS
Isocratic mobile phase composition:	67% A; 33% B
Injection volume:	20 μL of 100 pg/μL
Temperature:	Ambient

Detection: MS ESI⁺, SIR 411.3

Instrument: Alliance 2795 HT, Micromass ZQ

MS Conditions

Micromass ZQ ESI⁺

Capillary (kV): 3.0

Cone (V): 30

Extractor: 3.0

RF lens: 0.5

Source temp.: 150

Desolvation temp.: 350

Cone gas flow (L/Hr): 60

Desolvation gas flow (L/Hr): 500

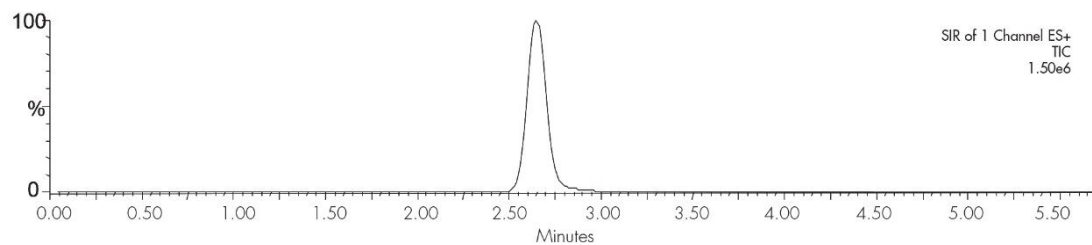
LM resolution: 15

HM resolution: 15

Ion energy: 1.0

Multiplier (V): 650

Results and Discussion



Featured Products

Alliance HPLC System <<https://www.waters.com/534293>>

WA20738.100, June 2002