

## Suprofen pH 2.5 - LC-MS

---

Waters Corporation



This is an Application Brief and does not contain a detailed Experimental section.

---

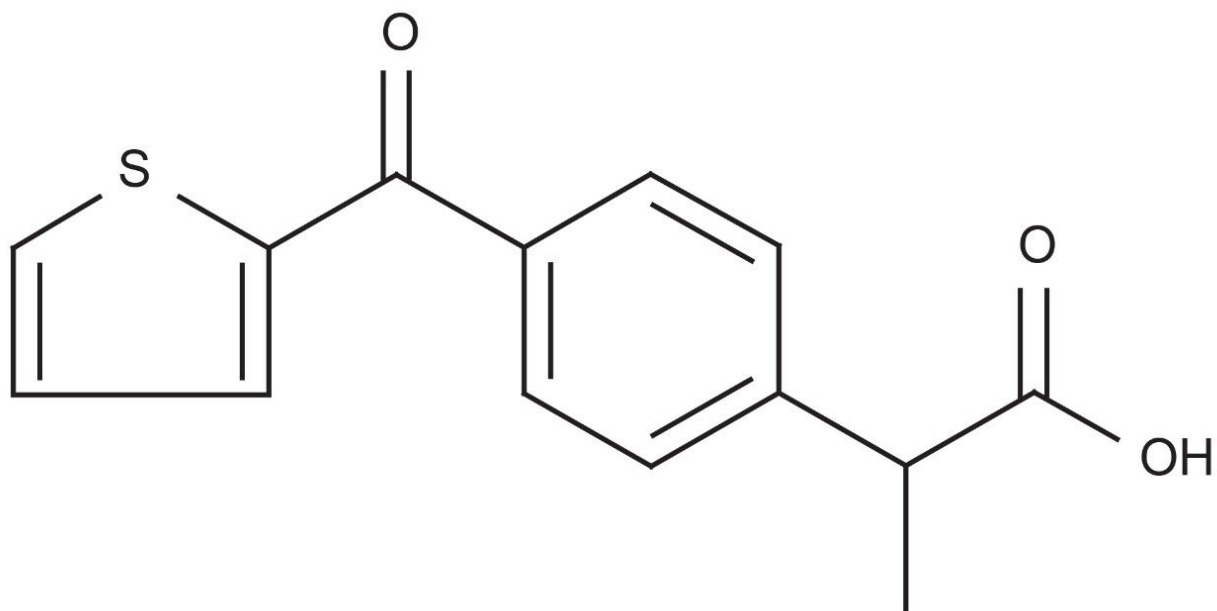
### Abstract

This application brief demonstrates analysis of suprofen by LC-MS.

---

## Introduction

The compound analyzed in this study is suprofen by LC-MS.



# Suprofen

---

## Experimental

### Conditions

Column:

Xterra MS C<sub>18</sub> 2.1 x 30 mm, 3.5 μm

Part number:

186000398

|                                     |  |
|-------------------------------------|--|
| Mobile phase A:                     | 0.1% HCOOH in H <sub>2</sub> O, pH 2.5 |
| Mobile phase B:                     | 0.1% HCOOH in ACN, pH 2.5              |
| Flow rate:                          | 0.2 mL/min to MS                       |
| Isocratic mobile phase composition: | 70% A; 30% B                           |
| Injection volume:                   | 20 µL of 100 ng/µL                     |
| Temperature:                        | Ambient                                |
| Detection:                          | MS ESI <sup>+</sup> , SIR 214.95       |
| Instrument:                         | Alliance 2795 HT, Micromass ZQ         |

## MS Conditions

Micromass ZQ ESI<sup>+</sup>

|                              |     |
|------------------------------|-----|
| Capillary (kV):              | 3.0 |
| Cone (V):                    | 30  |
| Extractor:                   | 3.0 |
| RF lens:                     | 0.5 |
| Source temp.:                | 150 |
| Desolvation temp.:           | 350 |
| Cone gas flow (L/Hr):        | 60  |
| Desolvation gas flow (L/Hr): | 500 |

Micromass ZQ ESI<sup>+</sup>

LM resolution: 15

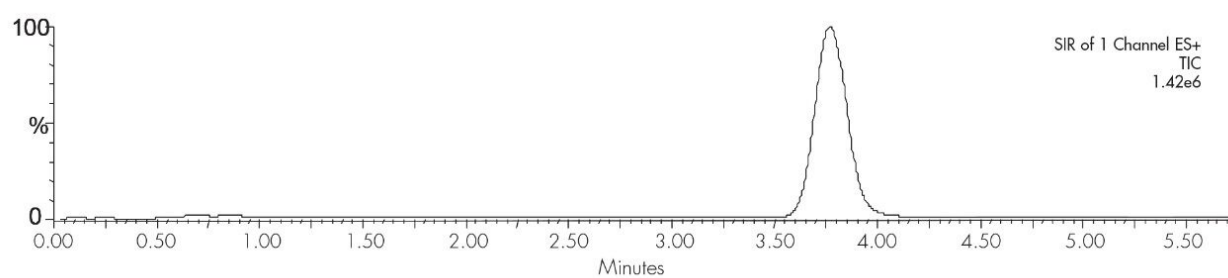
HM resolution: 15

Ion energy: 1.0

Multiplier (V): 650

---

## Results and Discussion



---

## Featured Products

Alliance HPLC System <<https://www.waters.com/534293>>

WA20738.103, June 2002

© 2021 Waters Corporation. All Rights Reserved.