

Note d'application

Suprofen pH 2.5 - LC-MS

Waters Corporation



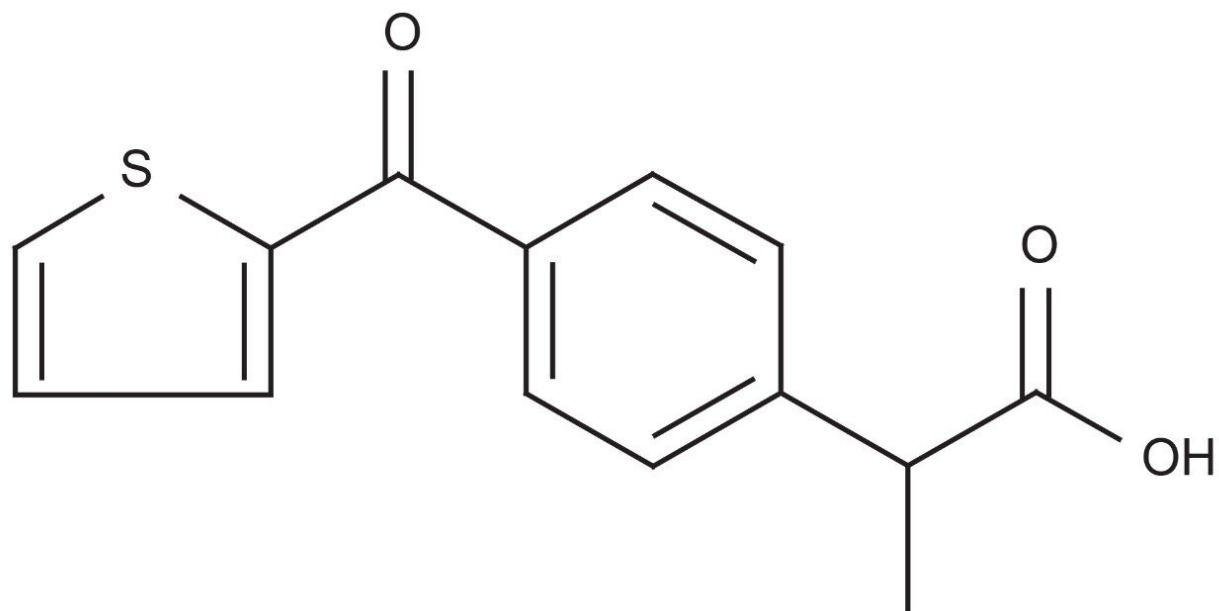
This is an Application Brief and does not contain a detailed Experimental section.

Abstract

This application brief demonstrates analysis of suprofen by LC-MS.

Introduction

The compound analyzed in this study is suprofen by LC-MS.



Suprofen

Experimental

Conditions

Column:

Xterra MS C₁₈ 2.1 x 30 mm, 3.5 μm

Part number:

186000398

Mobile phase A:	0.1% HCOOH in H ₂ O, pH 2.5
Mobile phase B:	0.1% HCOOH in ACN, pH 2.5
Flow rate:	0.2 mL/min to MS
Isocratic mobile phase composition:	70% A; 30% B
Injection volume:	20 µL of 100 ng/µL
Temperature:	Ambient
Detection:	MS ESI ⁺ , SIR 214.95
Instrument:	Alliance 2795 HT, Micromass ZQ

MS Conditions

Micromass ZQ ESI⁺

Capillary (kV):	3.0
Cone (V):	30
Extractor:	3.0
RF lens:	0.5
Source temp.:	150
Desolvation temp.:	350
Cone gas flow (L/Hr):	60
Desolvation gas flow (L/Hr):	500

Micromass ZQ ESI⁺

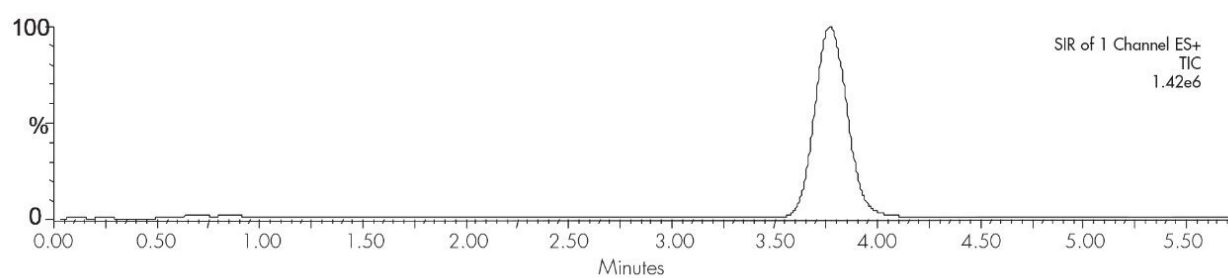
LM resolution: 15

HM resolution: 15

Ion energy: 1.0

Multiplier (V): 650

Results and Discussion



Featured Products

Alliance HPLC System <<https://www.waters.com/534293>>

WA20738.103, June 2002

© 2021 Waters Corporation. All Rights Reserved.