

## Suprofen pH 2.5 - LC-MS

---

Waters Corporation



This is an Application Brief and does not contain a detailed Experimental section.

---

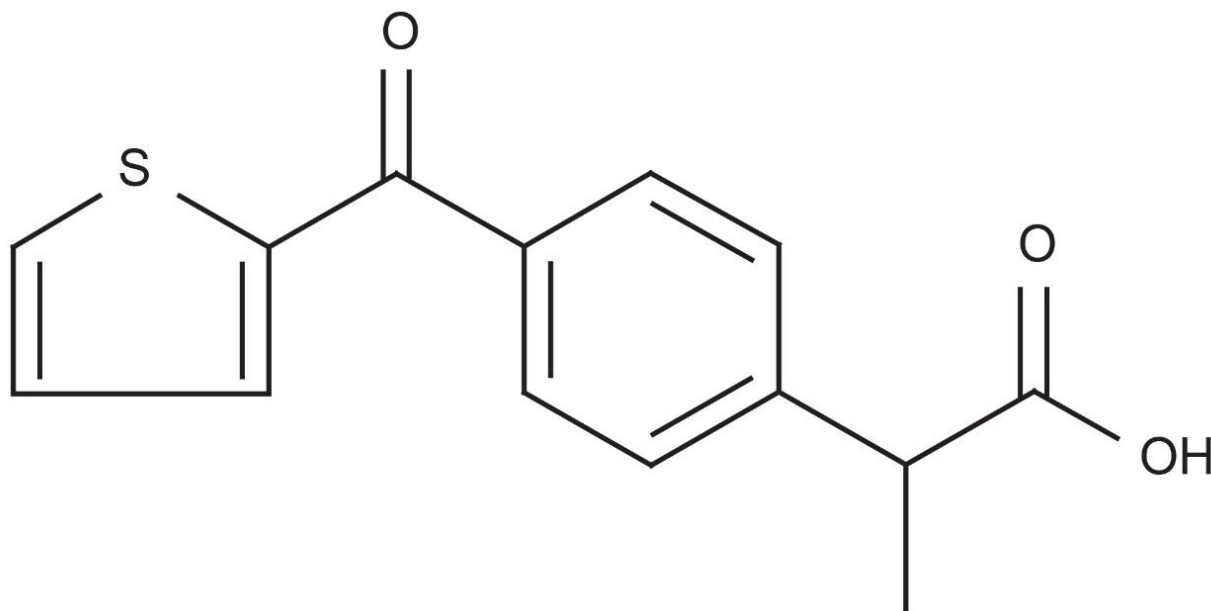
### Abstract

This application brief demonstrates analysis of suprofen by LC-MS.

---

## Introduction

The compound analyzed in this study is suprofen by LC-MS.



# Suprofen

---

## Experimental

### Conditions

Column:

Xterra MS C<sub>18</sub> 2.1 x 30 mm, 3.5 μm

Part number:

186000398

Mobile phase A:	0.1% HCOOH in H <sub>2</sub> O, pH 2.5
Mobile phase B:	0.1% HCOOH in ACN, pH 2.5
Flow rate:	0.2 mL/min to MS
Isocratic mobile phase composition:	70% A; 30% B
Injection volume:	20 µL of 100 ng/µL
Temperature:	Ambient
Detection:	MS ESI <sup>+</sup> , SIR 214.95
Instrument:	Alliance 2795 HT, Micromass ZQ

## MS Conditions

### Micromass ZQ ESI<sup>+</sup>

Capillary (kV):	3.0
Cone (V):	30
Extractor:	3.0
RF lens:	0.5
Source temp.:	150
Desolvation temp.:	350
Cone gas flow (L/Hr):	60
Desolvation gas flow (L/Hr):	500
LM resolution:	15

Micromass ZQ ESI<sup>+</sup>

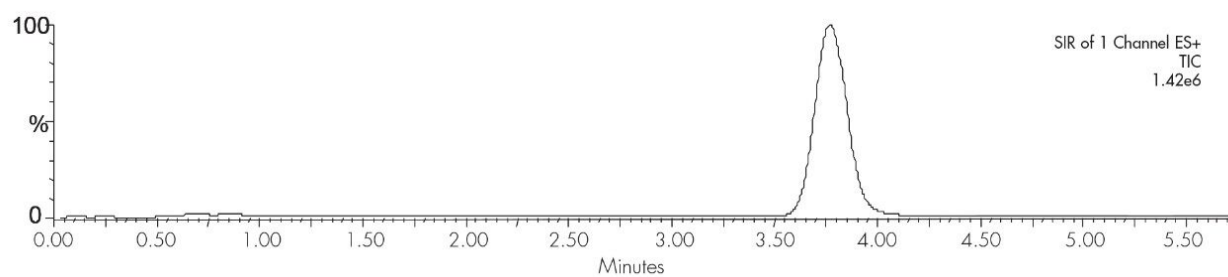
HM resolution: 15

Ion energy: 1.0

Multiplier (V): 650

---

## Results and Discussion



---

## Featured Products

Alliance HPLC System <<https://www.waters.com/534293>>

WA20738.103, June 2002