

Methylphenidate HCL

Waters Corporation



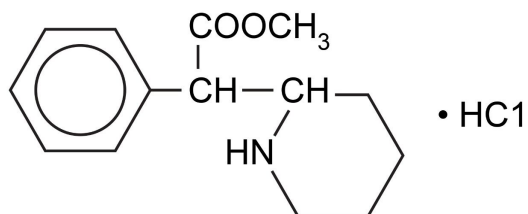
This is an Application Brief and does not contain a detailed Experimental section.

Abstract

This application brief demonstrates the analysis of Methylphenidate HCL using Symmetry Columns.

Introduction

The compound analyzed in this study is Methylphenidate HCL.



1. Methylphenidate HCL

Experimental

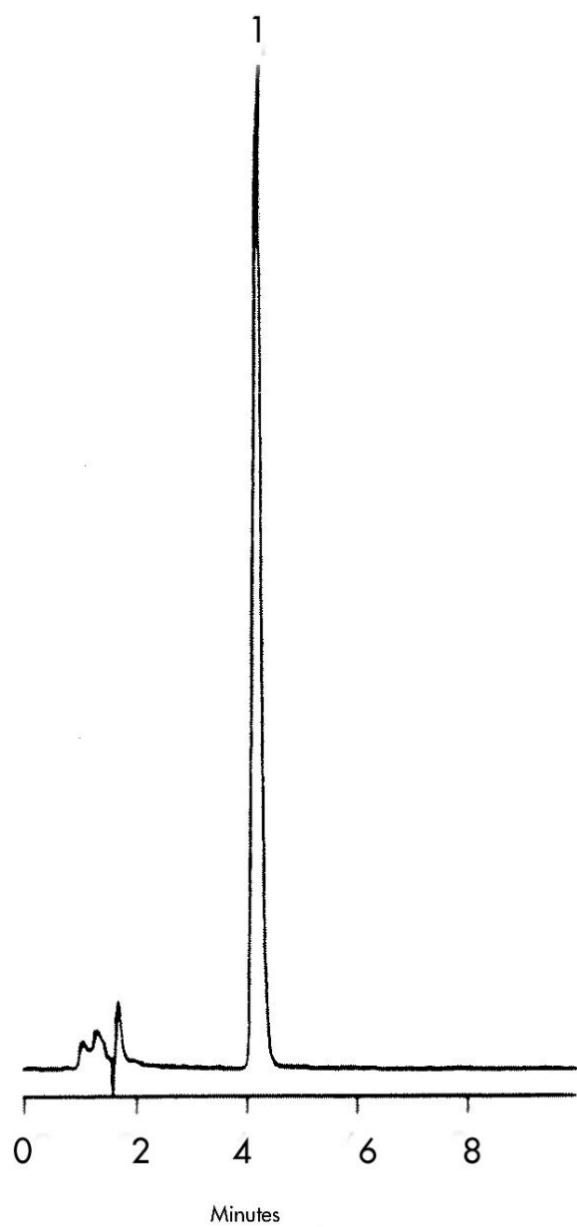
HPLC Method

Column:	Symmetry C ₈ , 3.9 x 150 mm, 5 μm
Guard Column:	Symmetry Guard Column 3.9 x 20 mm, 5 μm
Part numbers:	Column - WAT046970, Guard - WAT054250
Mobile phase:	20 mM potassium phosphate, pH 2.18/methanol 80:20
Flow rate:	1.0 mL/min
Injection volume:	15 μL of 200 μg/mL
Detection:	UV @ 254 nm

USP Tailing Factors

1.1.5

Results and Discussion



Featured Products

Alliance HPLC System <<https://www.waters.com/534293>>

2998 Photodiode Array (PDA) Detector <<https://www.waters.com/1001362>>

WA31763.100, June 2003

© 2021 Waters Corporation. All Rights Reserved.