

Nota de aplicación

## Methylphenidate HCL

---

Waters Corporation



This is an Application Brief and does not contain a detailed Experimental section.

---

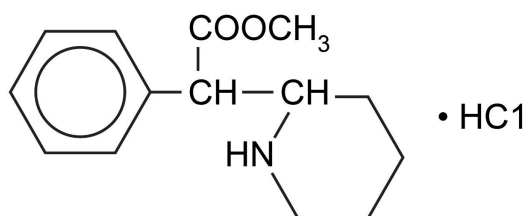
### Abstract

This application brief demonstrates the analysis of Methylphenidate HCL using Symmetry Columns.

---

## Introduction

The compound analyzed in this study is Methylphenidate HCL.



## 1. Methylphenidate HCL

---

## Experimental

### HPLC Method

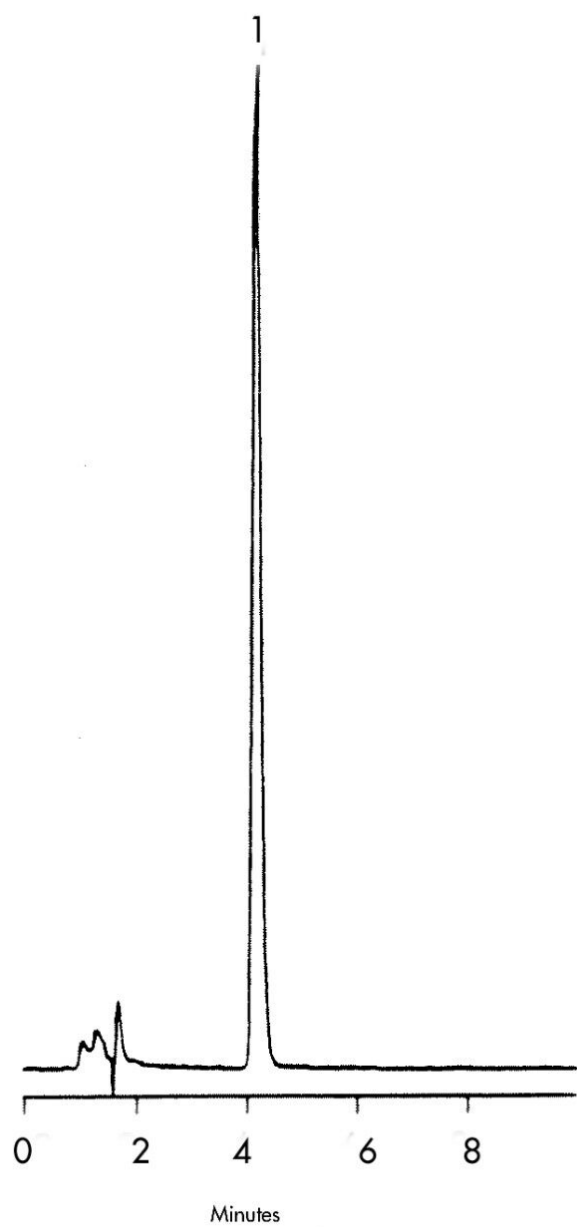
|                   |  |
|-------------------|--|
| Column:           | Symmetry C <sub>8</sub> , 3.9 x 150 mm, 5 μm         |
| Guard Column:     | Symmetry Guard Column 3.9 x 20 mm, 5 μm              |
| Part numbers:     | Column - WAT046970, Guard - WAT054250                |
| Mobile phase:     | 20 mM potassium phosphate, pH 2.18/methanol<br>80:20 |
| Flow rate:        | 1.0 mL/min   |
| Injection volume: | 15 μL of 200 μg/mL                                   |
| Detection:        | UV @ 254 nm  |

## USP Tailing Factors

1.1.5

---

## Results and Discussion



---

## Featured Products

Alliance HPLC System <<https://www.waters.com/534293>>

2998 Photodiode Array (PDA) Detector <<https://www.waters.com/1001362>>

WA31763.100, June 2003

© 2021 Waters Corporation. All Rights Reserved.