

## Acetaminophen and Codeine

---

Waters Corporation



This is an Application Brief and does not contain a detailed Experimental section.

---

### Abstract

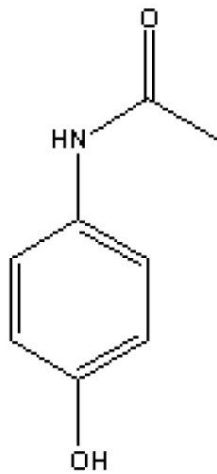
This application brief highlights the analysis of acetaminophen and codeine using Symmetry C<sub>8</sub> columns.

---

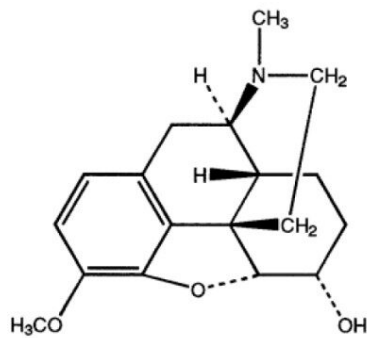
## Introduction

Compounds analyzed in this study are:

1. Acetaminophen
2. Codeine



## 1. Acetaminophen



## 2. Codeine

---

## Experimental

### HPLC Method

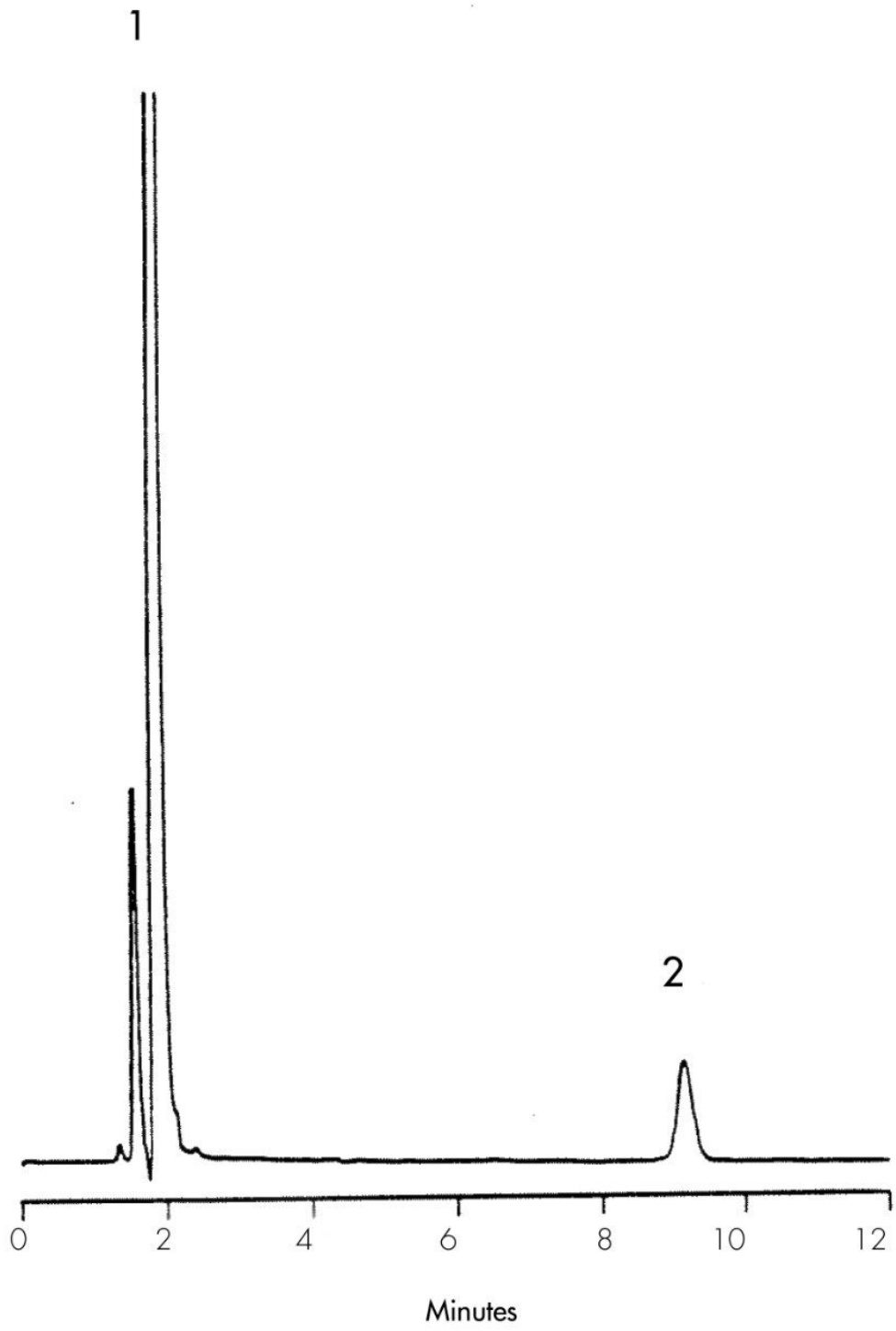
Column:	Symmetry C <sub>8</sub> , 3.9 x 150 mm, 5 μm (p/n: WAT046970)
Mobile phase:	10 mM docusate sodium in methanol/water/THF/phosphoric acid 60:36:4:1
Flow rate:	0.75 mL/min
Injection volume:	15 μL of 55 μg/mL acetaminophen and 35 μg of codeine sample
Detection:	UV @ 254 nm

### USP Tailing Factors

1. 1.09
2. 1.04

---

## Results and Discussion



---

Featured Products

WA31763.11, June 2003

© 2021 Waters Corporation. All Rights Reserved.