

Naproxen – Symmetry C₈

Waters Corporation



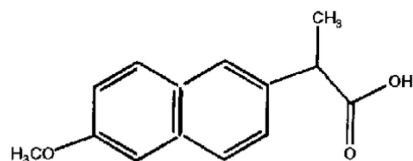
This is an Application Brief and does not contain a detailed Experimental section.

Abstract

This application brief highlights the analysis of naproxen using Symmetry C₈.

Introduction

Compound used in this application brief is naproxen.



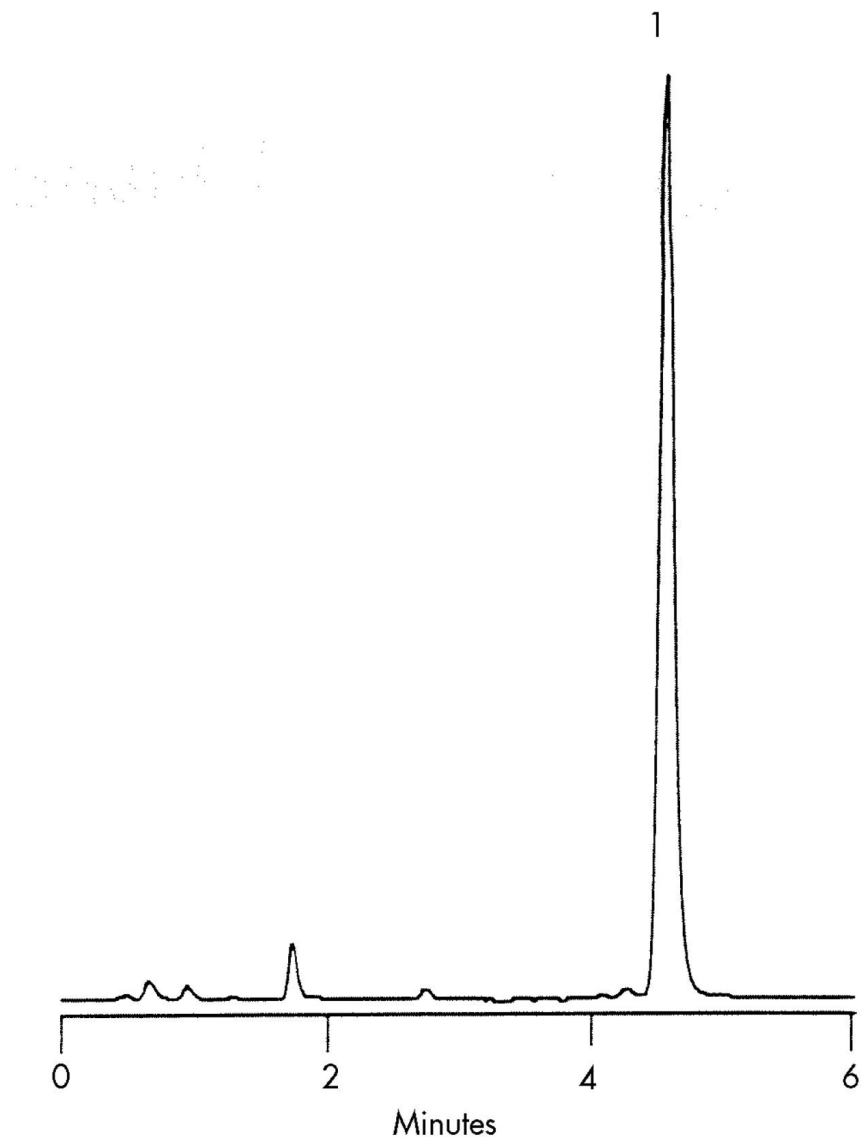
1. Naproxen

Experimental

HPLC Method

Column:	Symmetry C ₈ , 3.9 x 150 mm, 5 μm
Guard column:	Sentry Guard Column 3.9 mm x 20 mm, 5 μm
Part numbers:	Column - WAT046970, Guard - WAT054250
Mobile phase:	Acetonitrile/water/glacial acetic acid 50491
Flow rate:	1.0 mL/min
Injection volume:	5 μL of 100 μg/mL sample
Detection:	UV @ 254 nm
USP Tailing Factors:	1. 1.15

Results and Discussion



Featured Products

· [Alliance HPLC <https://www.waters.com/514248>](https://www.waters.com/514248)

WA31763.110, June 2003



© 2021 Waters Corporation. All Rights Reserved.