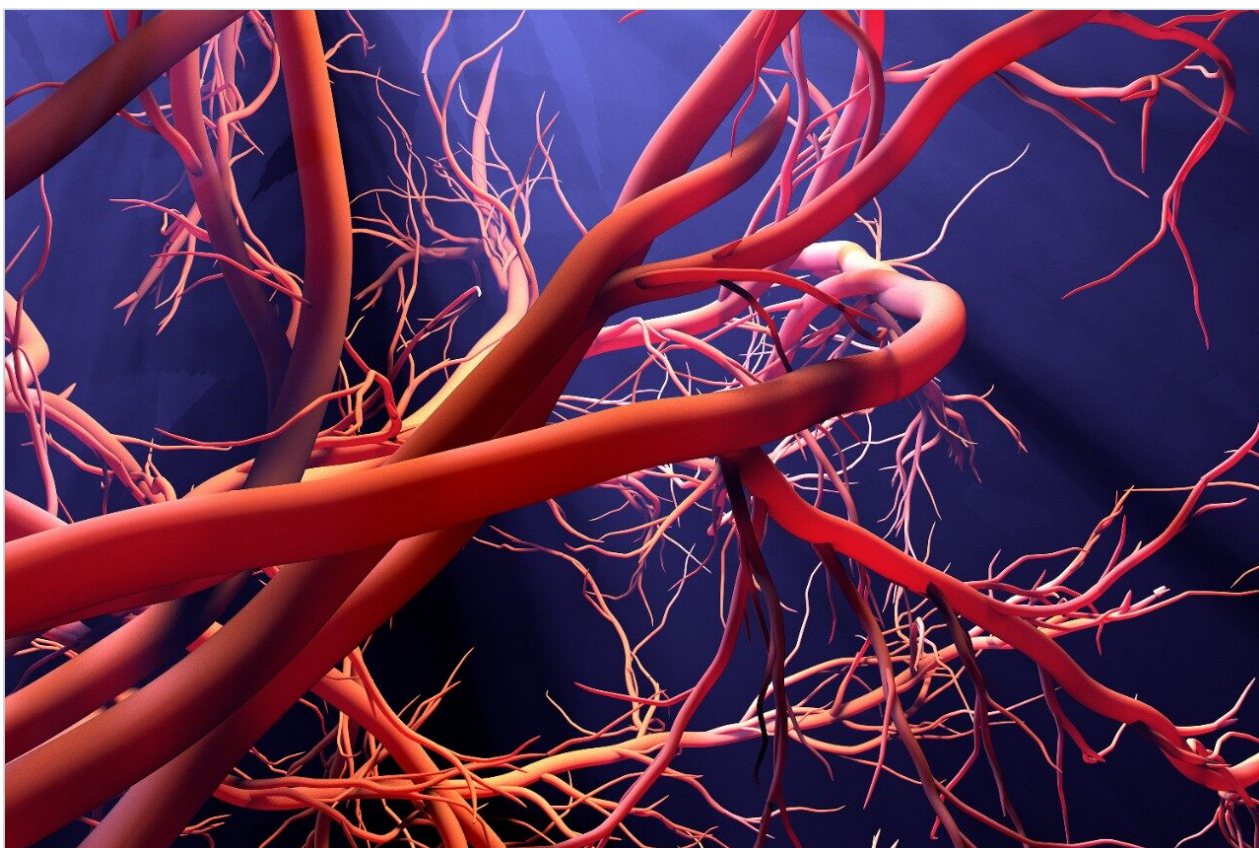


Nota de aplicación

Nifedipine

Waters Corporation

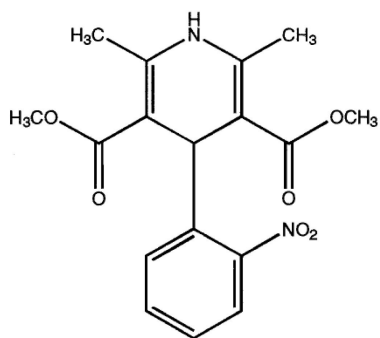


Abstract

This application brief highlights the analysis of nifedipine using SymmetryShield RP₁₈.

Introduction

Nifedipine, is a calcium channel blocker medication used to manage angina, high blood pressure, Raynaud's phenomenon, and premature labor. It is one of the treatments of choice for Prinzmetal angina. It may be used to treat severe high blood pressure in pregnancy.



1. Nifedipine

Experimental

HPLC Method

| | |
|-------------------|-----------------------------------------------------------------------|
| Column: | SymmetryShield RP ₁₈ , 4.6 x 150 mm, 5 μm (p/n: 186000109) |
| Mobile phase: | 20 mM phosphate buffer, pH 7.0/acetonitrile 40:60 |
| Flow rate: | 1.0 mL/min |
| Injection volume: | 5 μL |

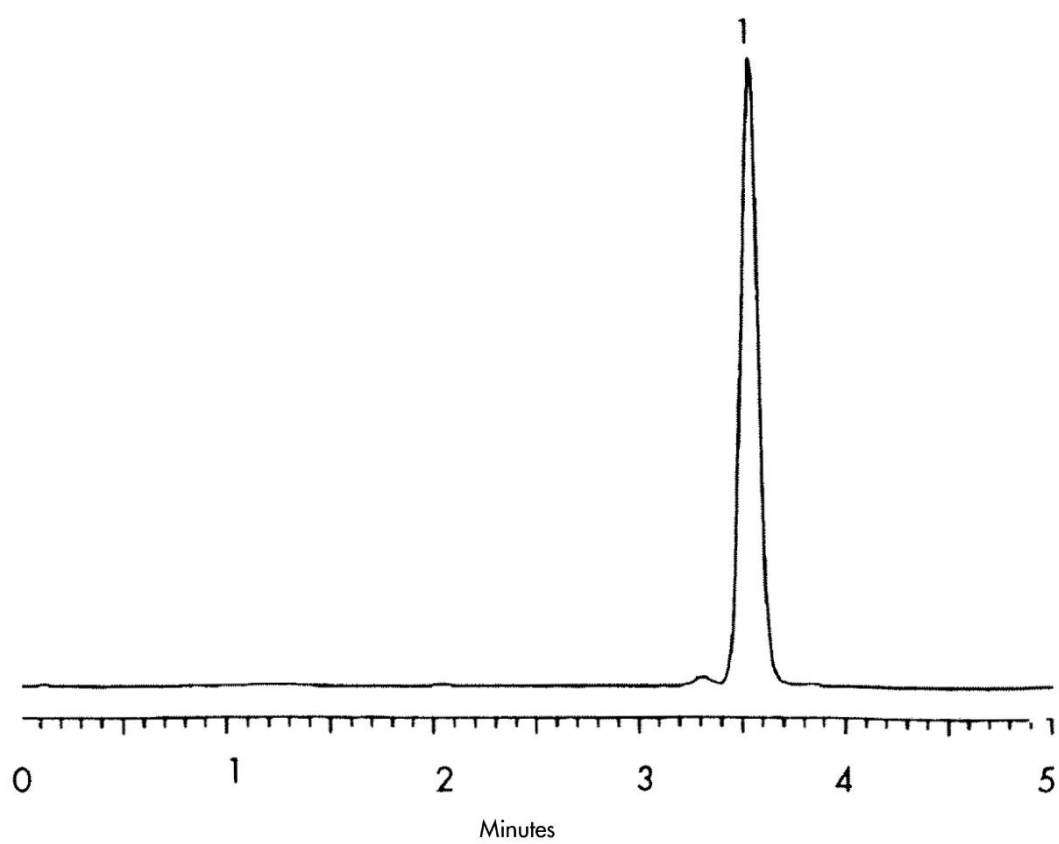
Detection:

UV @240 nm

USP tailing factors:

1.103

Results and Discussion



Featured Products

Alliance HPLC <<https://www.waters.com/514248>>

WA31763.113, June 2003

© 2021 Waters Corporation. All Rights Reserved.