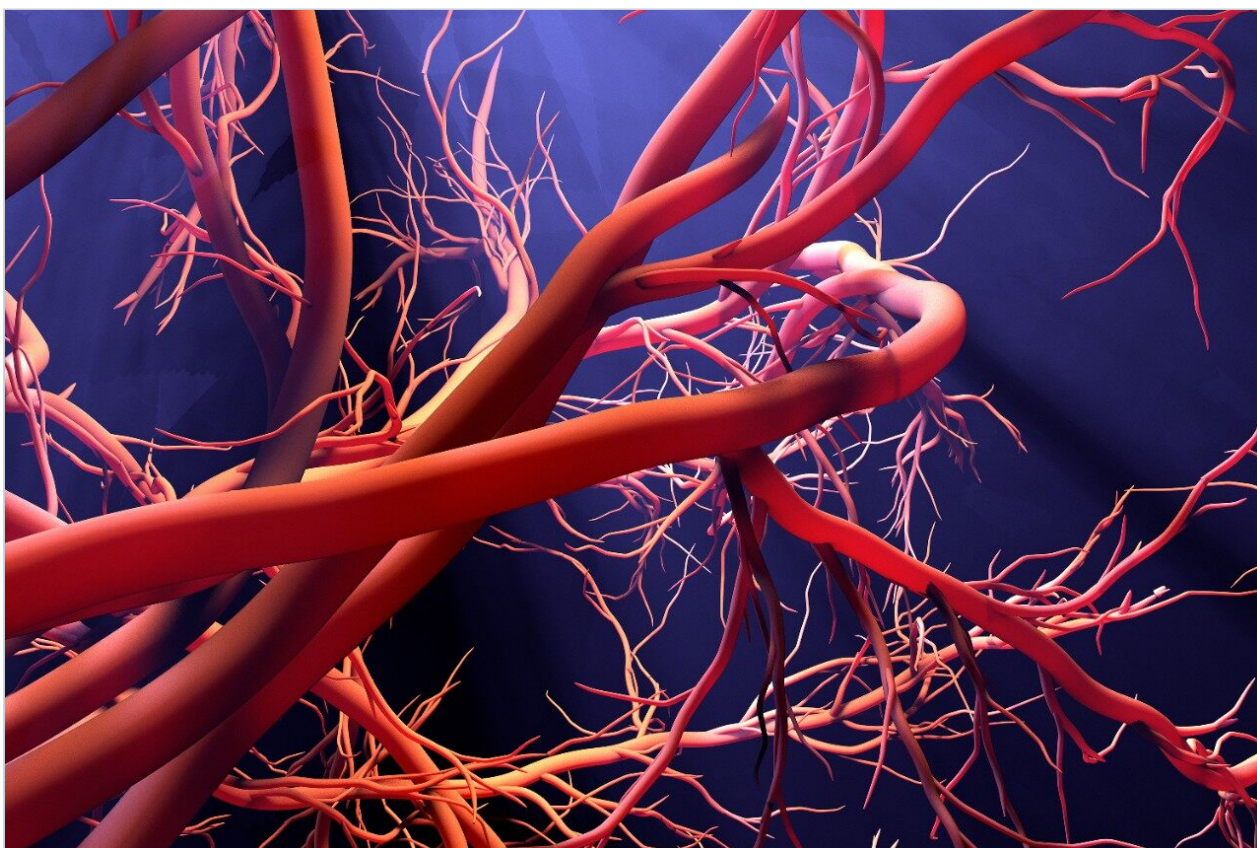


Note d'application

## Nifedipine

---

Waters Corporation



---

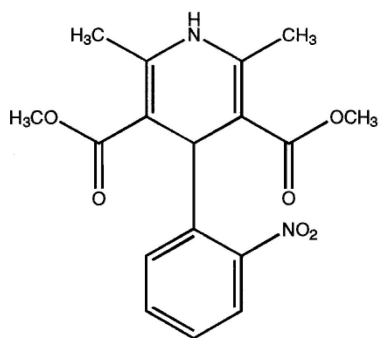
### Abstract

This application brief highlights the analysis of nifedipine using SymmetryShield RP<sub>18</sub>.

---

## Introduction

Nifedipine, is a calcium channel blocker medication used to manage angina, high blood pressure, Raynaud's phenomenon, and premature labor. It is one of the treatments of choice for Prinzmetal angina. It may be used to treat severe high blood pressure in pregnancy.



### 1. Nifedipine

---

## Experimental

### HPLC Method

|                   |   |
|-------------------|---|
| Column:           | SymmetryShield RP <sub>18</sub> , 4.6 x 150 mm, 5 μm (p/n: 186000109) |
| Mobile phase:     | 20 mM phosphate buffer, pH 7.0/acetonitrile<br>40:60                  |
| Flow rate:        | 1.0 mL/min  |
| Injection volume: | 5 μL  |

Detection:

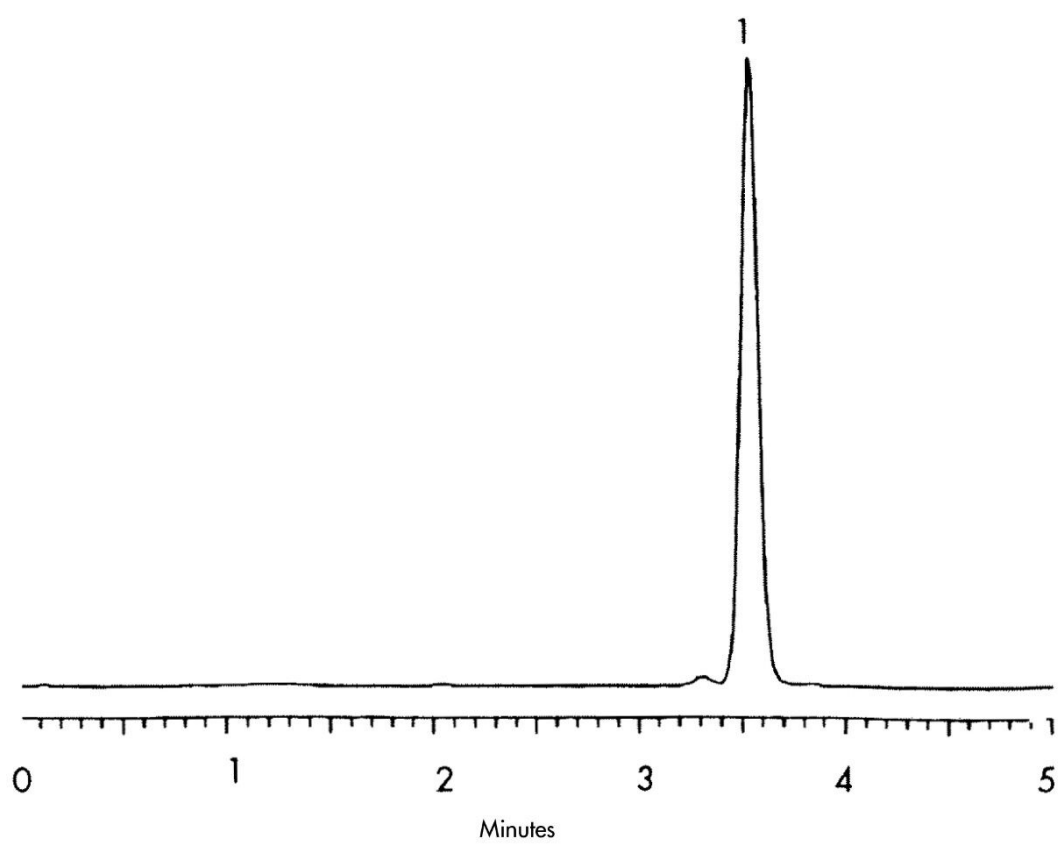
UV @240 nm

USP tailing factors:

1.103

---

## Results and Discussion



---

## Featured Products

Alliance HPLC <<https://www.waters.com/514248>>

WA31763.113, June 2003

© 2021 Waters Corporation. All Rights Reserved.