

# Waters™

應用手冊

## Nifedipine

---

Waters Corporation

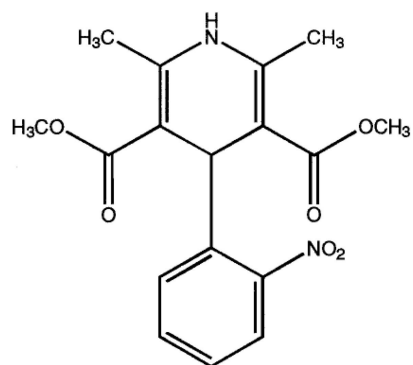


### Abstract

This application brief highlights the analysis of nifedipine using SymmetryShield RP<sub>18</sub>.

### Introduction

Nifedipine, is a calcium channel blocker medication used to manage angina, high blood pressure, Raynaud's phenomenon, and premature labor. It is one of the treatments of choice for Prinzmetal angina. It may be used to treat severe high blood pressure in pregnancy.



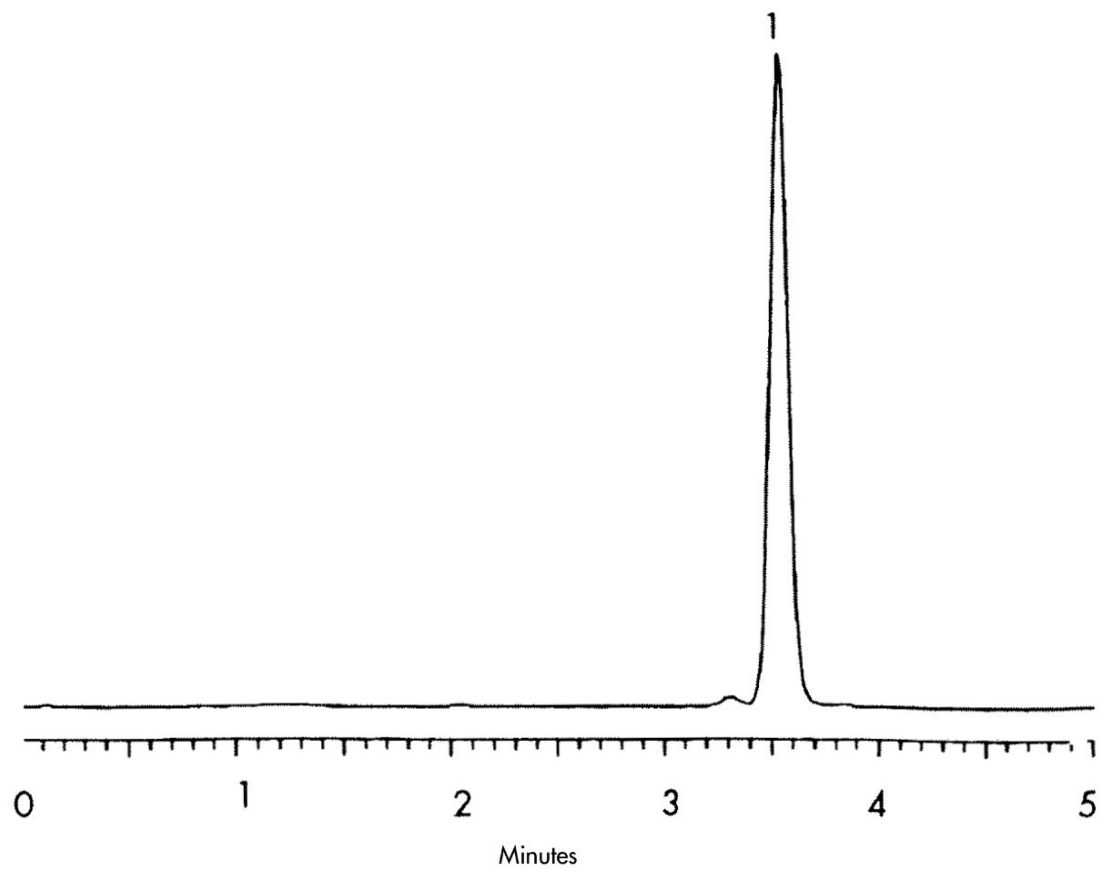
## 1. Nifedipine

### Experimental

#### HPLC Method

Column:	SymmetryShield RP <sub>18</sub> , 4.6 x 150 mm, 5 μm (p/n: 186000109)
Mobile phase:	20 mM phosphate buffer, pH 7.0/acetonitrile 40:60
Flow rate:	1.0 mL/min
Injection volume:	5 μL
Detection:	UV @240 nm
USP tailing factors:	1.103

## Results and Discussion



## Featured Products

· [Alliance HPLC <https://www.waters.com/514248>](https://www.waters.com/514248)

WA31763.113, June 2003



© 2021 Waters Corporation. All Rights Reserved.