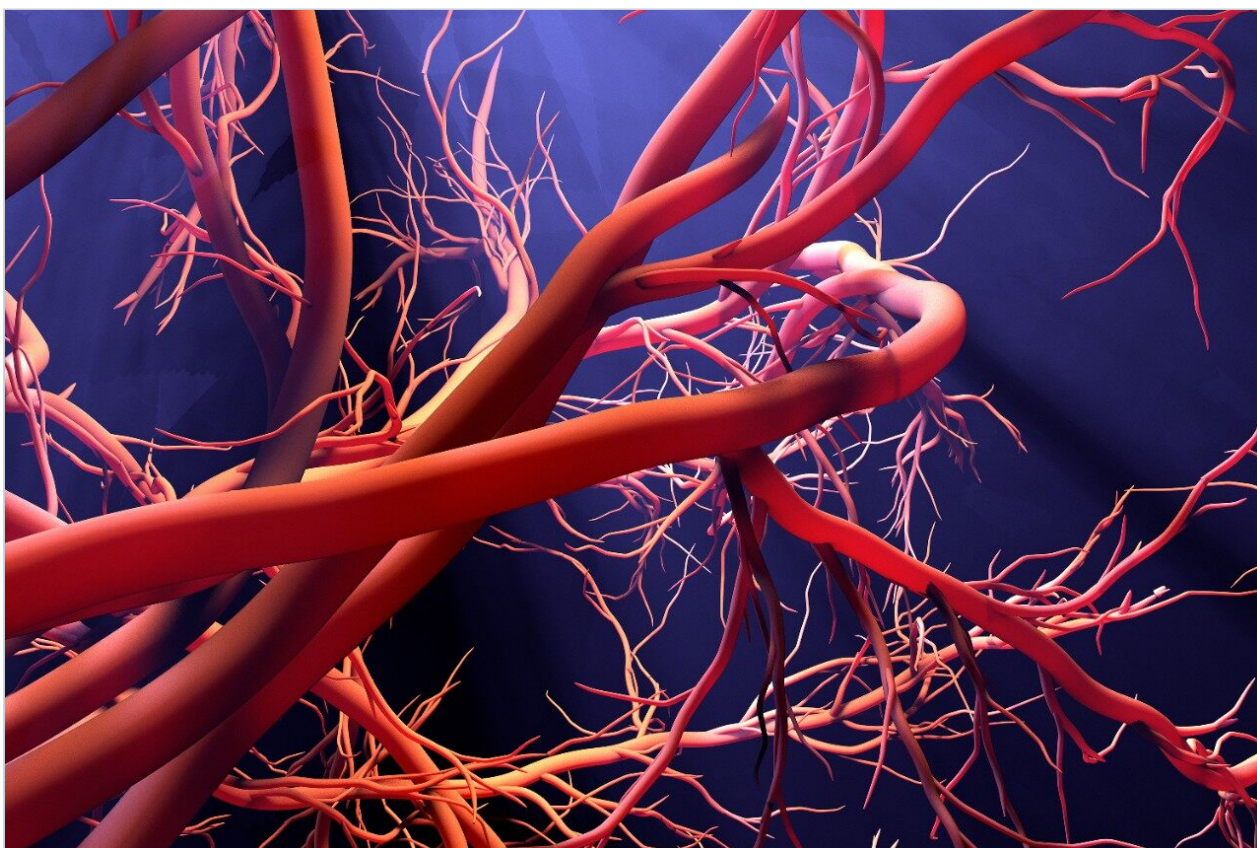


Application Note

Papaverine HCL

Waters Corporation



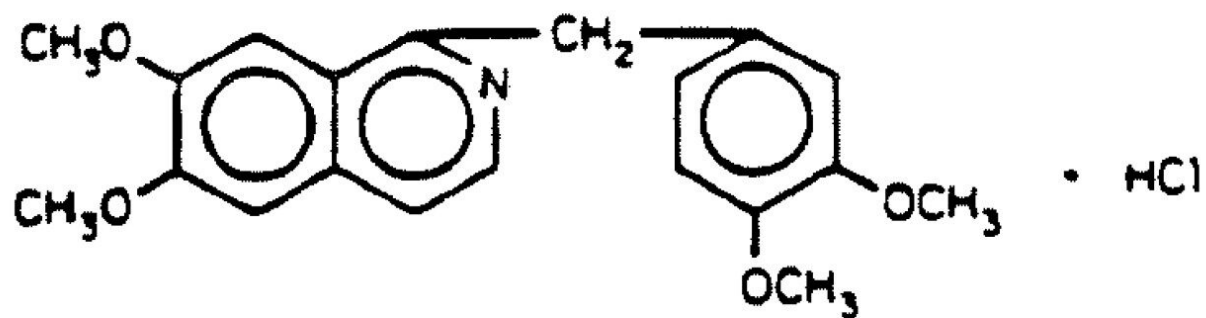
This is an Application Brief and does not contain a detailed Experimental section.

Abstract

This application brief highlights the analysis of papaverine HCl.

Introduction

This application brief highlights the analysis of papaverine HCl.



1. Papaverine HCl

Experimental

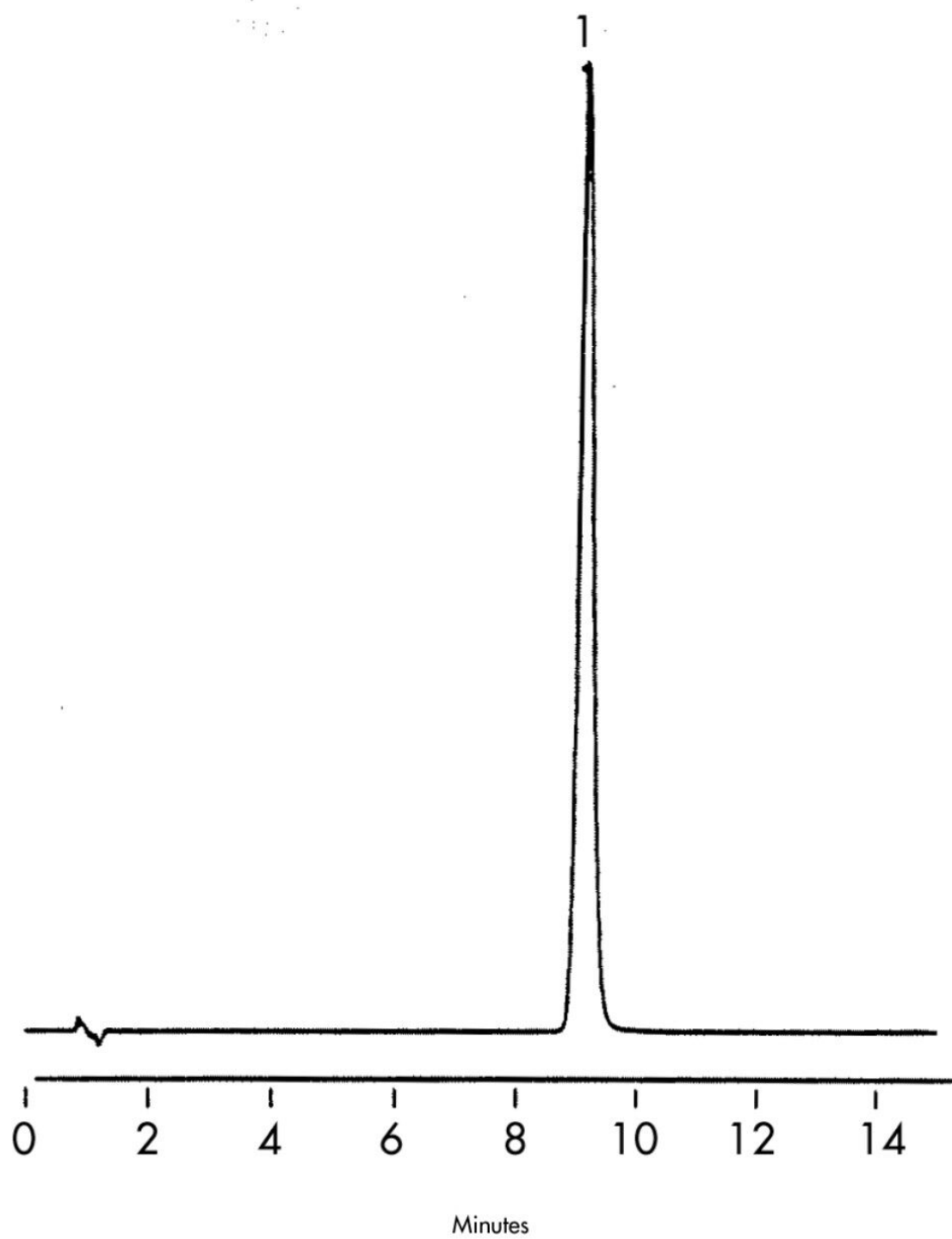
HPLC Method

Column:	Symmetry C ₁₈ , 3.9 x 150 mm, 5 μm (p/n: WAT046980)
Mobile phase:	10 mM sodium phosphate pH 3.0, 2.88 g/L sodium lauryl sulfate/acetonitrile 50:50
Flow rate:	1.0 mL/min
Injection volume:	10 μL of 20 μg/mL papaverine hydrochloride
Detection:	UV @ 254 nm

USP tailing factor:

1.11

Results and Discussion



Featured Products

WA31763.118, June 2003

© 2021 Waters Corporation. All Rights Reserved.