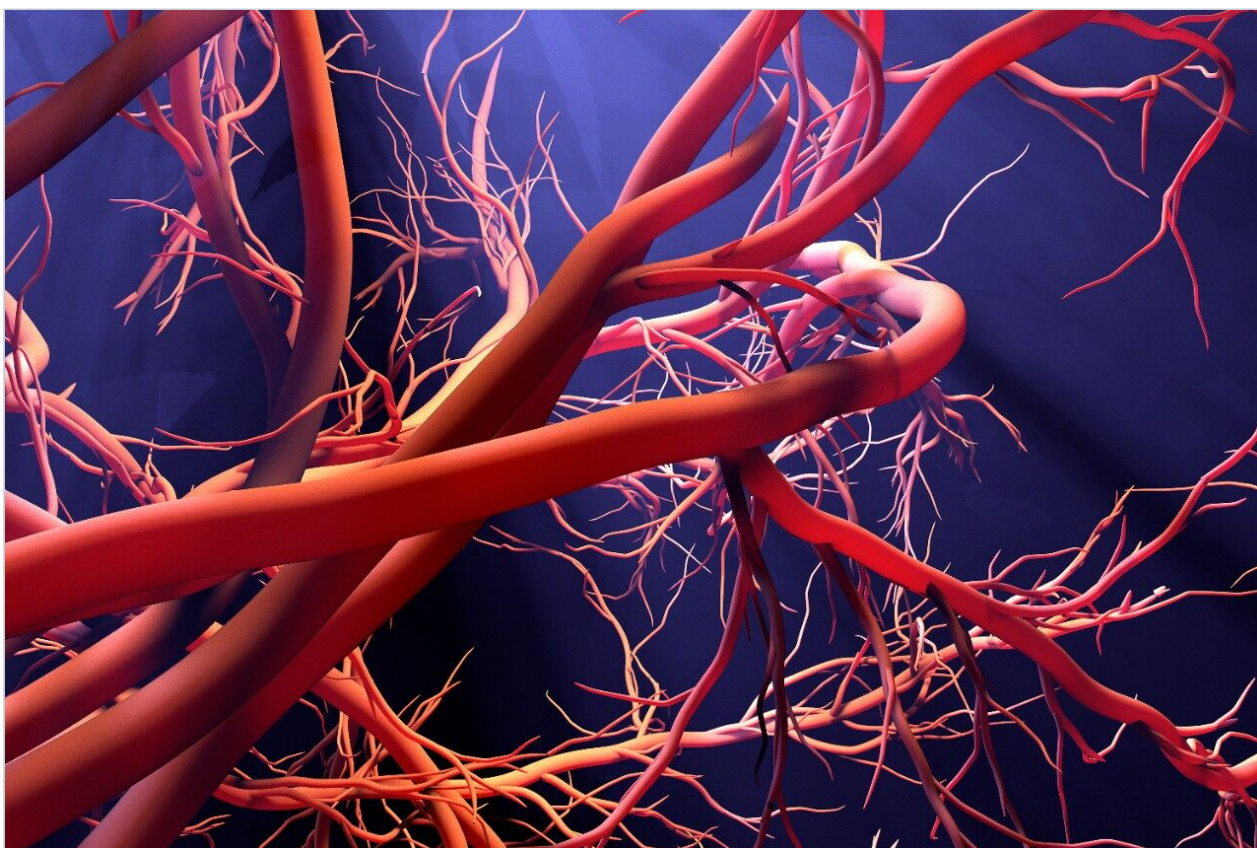


응용 자료

Papaverine HCL

Waters Corporation



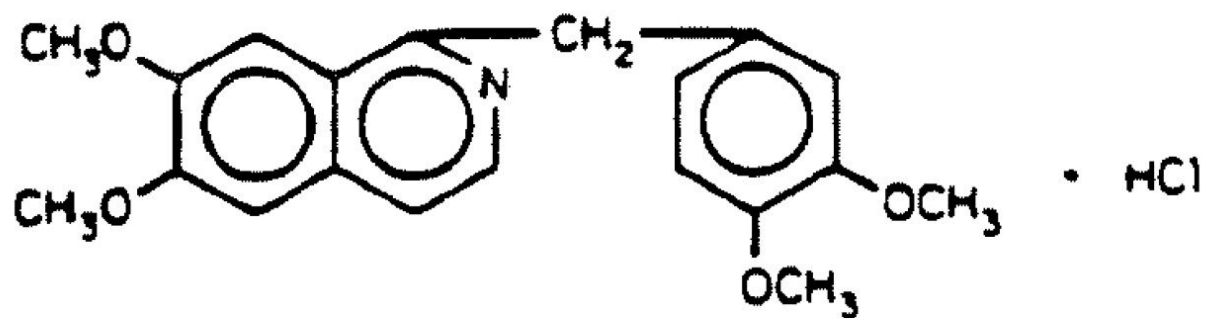
This is an Application Brief and does not contain a detailed Experimental section.

Abstract

This application brief highlights the analysis of papaverine HCl.

Introduction

This application brief highlights the analysis of papaverine HCl.



1. Papaverine HCl

Experimental

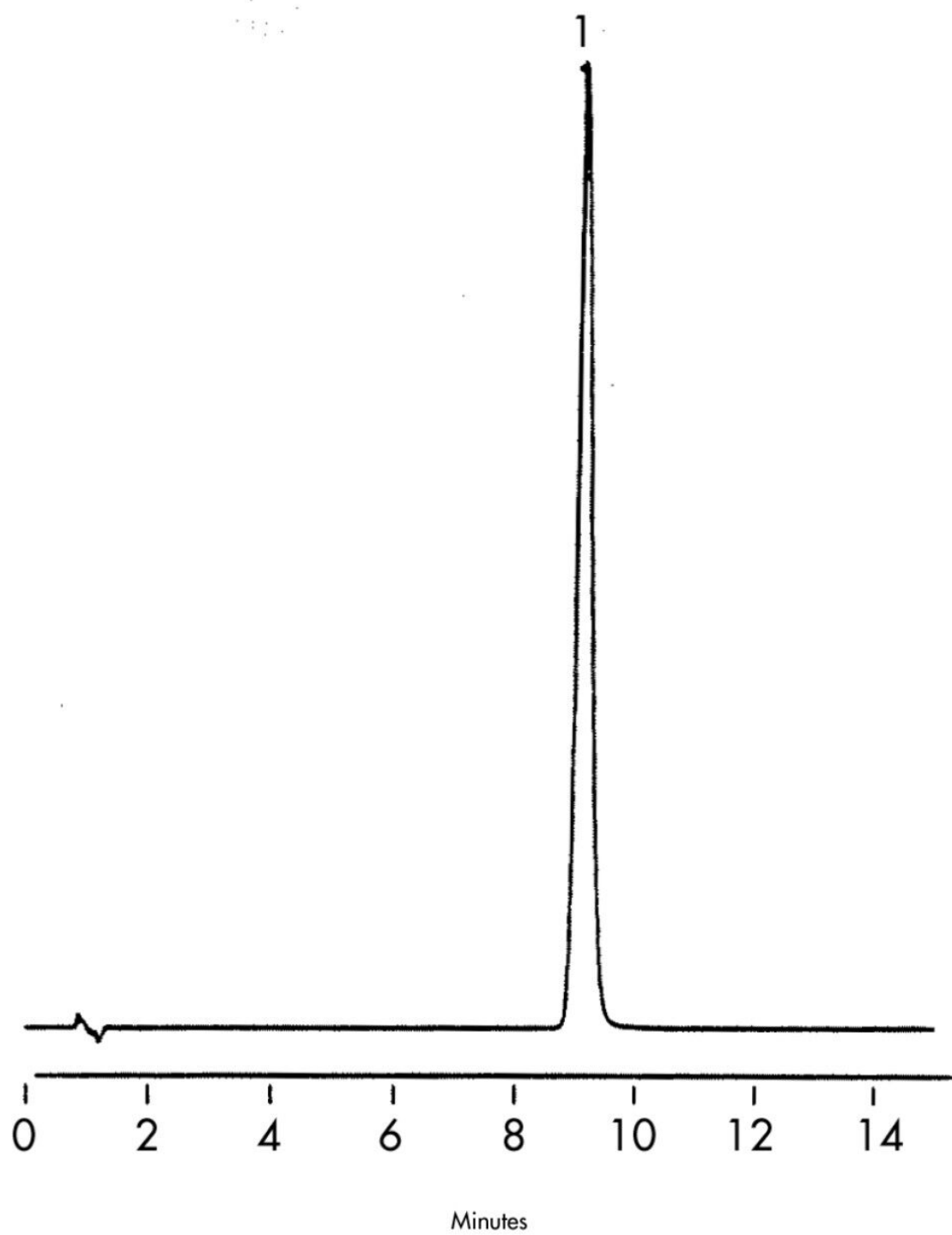
HPLC Method

| | |
|-------------------|--|
| Column: | Symmetry C ₁₈ , 3.9 x 150 mm, 5 μm (p/n: WAT046980) |
| Mobile phase: | 10 mM sodium phosphate pH 3.0, 2.88 g/L sodium lauryl sulfate/acetonitrile 50:50 |
| Flow rate: | 1.0 mL/min |
| Injection volume: | 10 μL of 20 μg/mL papaverine hydrochloride |
| Detection: | UV @ 254 nm |

USP tailing factor:

1.11

Results and Discussion



Featured Products

WA31763.118, June 2003

© 2021 Waters Corporation. All Rights Reserved.