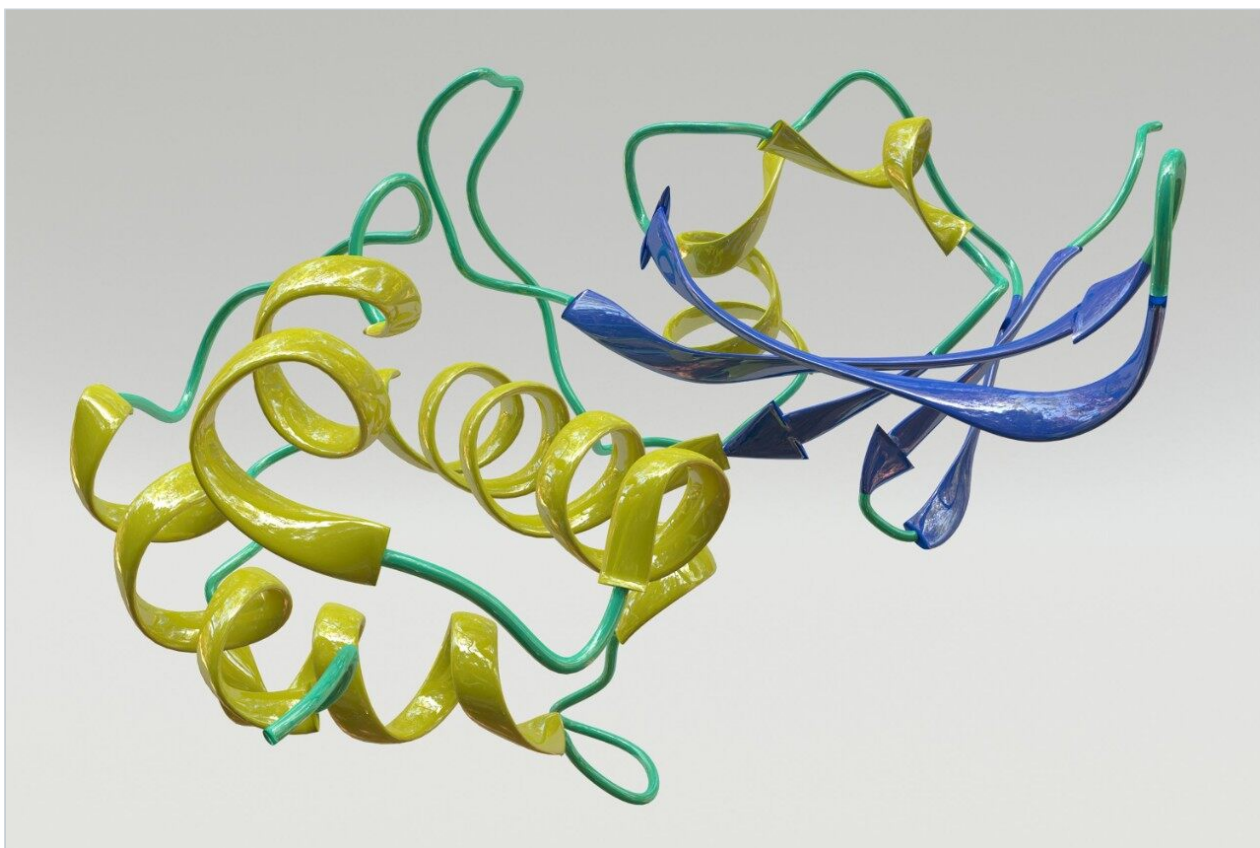


Note d'application

Peptides - Alberta Peptide Mixture

Waters Corporation



This is an Application Brief and does not contain a detailed Experimental section.

Abstract

This application brief highlights the analysis of Alberta peptide mixture using Symmetry C₁₈.

Introduction

The Alberts peptide mixture includes:

Ac-Arg-Gly-x-x-Gly-Leu-Gly-Leu-Gly-Lys-amide

where x-x=

S1 Ala=Gly with free N alpha amino group

S2 Gly-Gly

S3 Ala-Gly

S4 Val-Gly

S5 Val-Val

Experimental

HPLC Method

Column:	Symmetry C ₁₈ , 3.9 x 150 mm, 5 μm (p/n: WAT046980)
Mobile phase A:	0.1% TFA in water
Mobile phase B:	0.1% TFA in acetonitrile
Flow rate:	0.8 mL/min
Injection volume:	9 μL of peptide mixture; lyophilized sample dissolved in 1 mL mobile phase
Temperature:	35° C
Detection:	UV @ 214 nm

USP tailing factors:

1. 1.3

2. 1.2

3. 1.2

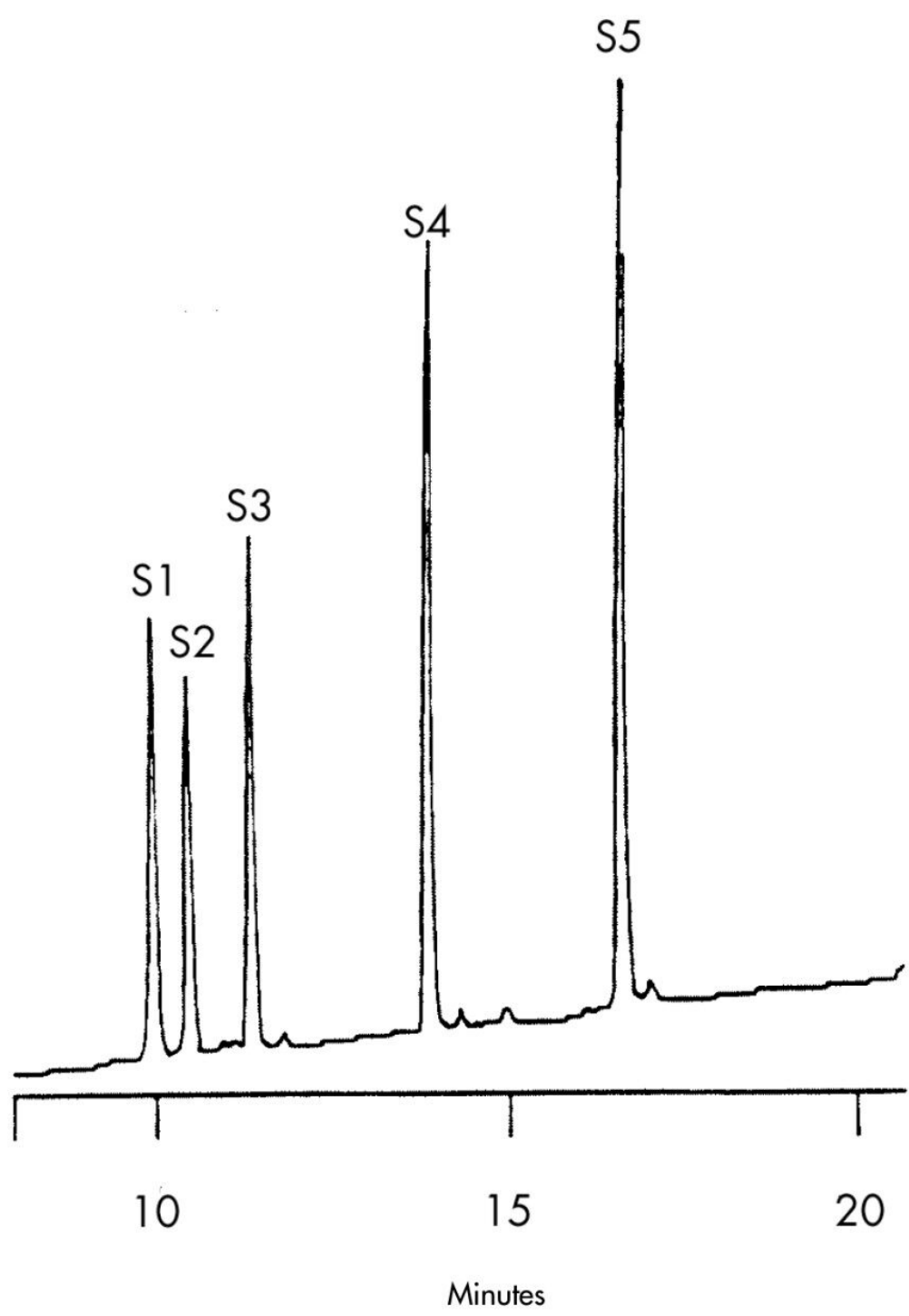
4. 1.2

5. 1.3

Gradient

Time (min)	%A	%B
0	90	10
30	60	40
35	40	60

Results and Discussion



Featured Products

WA31763.121, June 2003

© 2021 Waters Corporation. All Rights Reserved.