

Note d'application

Phencyclidine in Human Urine

Waters Corporation

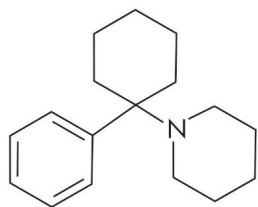


Abstract

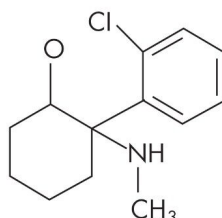
This application brief highlights the analysis of phencyclidine in human urine using SymmetryShield RP₁₈.

Introduction

Phencyclidine has been determined in human urine in this application brief.



1. Phencyclidine (PCP)



2. Ketamine (I.S.)

Experimental

HPLC Method

Column:	SymmetryShield RP ₁₈ , 3.9 x 150 mm, 5 μm (p/n: 186000108)
Guard Column:	Sentry guard column RP ₁₈ 3.9 x 20 mm, 5 μm (p/n: 186000107)
Mobile phase:	50 mM Phosphate buffer, pH 7/Acetonitrile 70:30
Flow rate:	1.0 mL/min
Injection volume:	20 μL urine extract
Temperature:	30° C

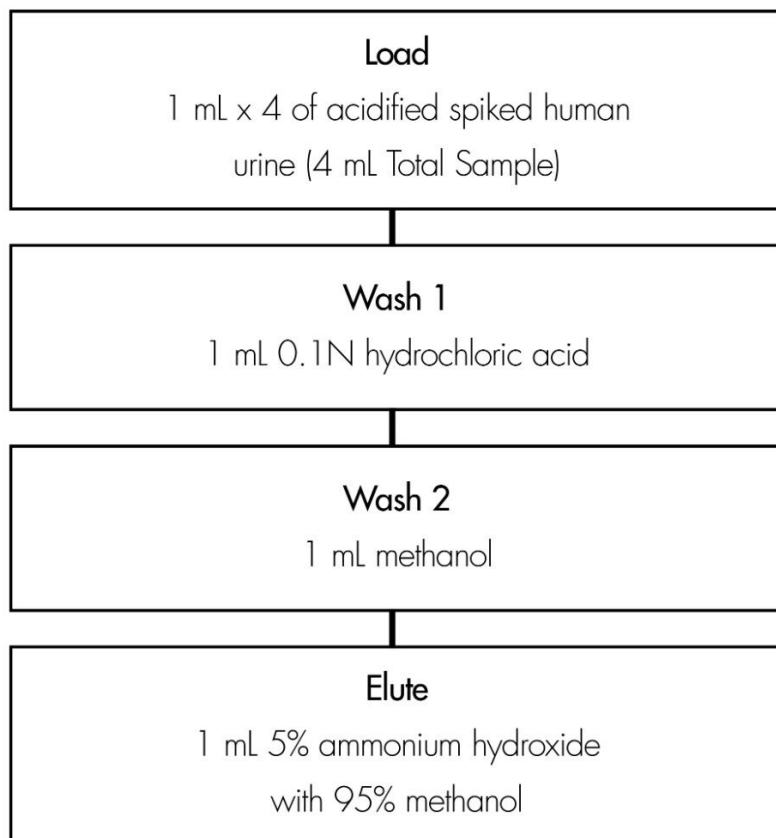
Detection:

UV @ 210 nm (0.01 AUFS)

Oasis[®] MCX Extraction Method

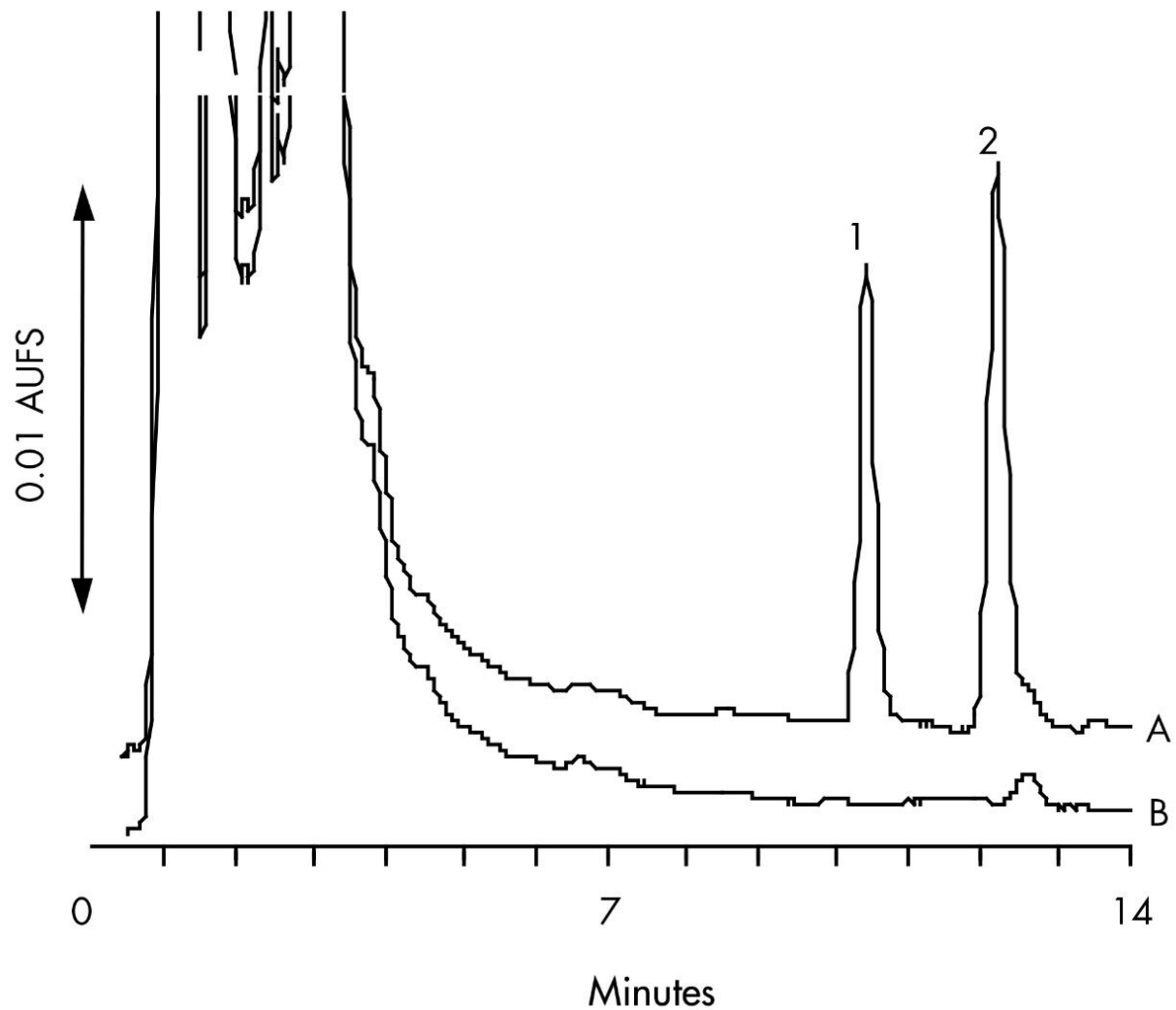
Oasis[®] MCX Extraction Plate, 30 mg/96-well

Part Number 186000248



Compound	% Recovery, (n=6) 0.3 µg/mL	%RSD (n=6) 1.5 µg/mL
Phencyclidine (PCP)	101.7 (2.3)	100.2 (0.8)
Ketamine (I.S.)		86.5 (1.0)

Results and Discussion



Featured Products

WA31763.124, June 2003

© 2021 Waters Corporation. All Rights Reserved.