

Acetaminophen in Serum

Waters Corporation



This is an Application Brief and does not contain a detailed Experimental section.

Abstract

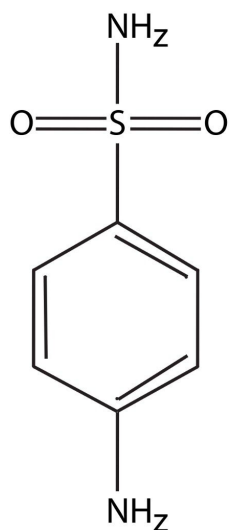
This application brief highlights the analysis of acetaminophen in serum using SymmetryShield columns.

Introduction

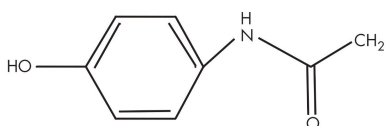
Compounds used in this study are:

1: Sulfanilamide (I.S.)

2: Acetaminophen



1. Sulfanilamide (I.S)



2. Acetaminophen

Experimental

HPLC Method

Column:

SymmetryShield RP₈, 3.9 x 150 mm, 5 μm (p/n:

WAT200655)

Guard Column: Sentry Guard Column 3.9 x 20 mm, 5 μ m (p/n: WAT200675)

Mobile phase: 20 mM potassium phosphate, pH 3.0/methanol 97:3)

Flow rate: 1.0 mL/min

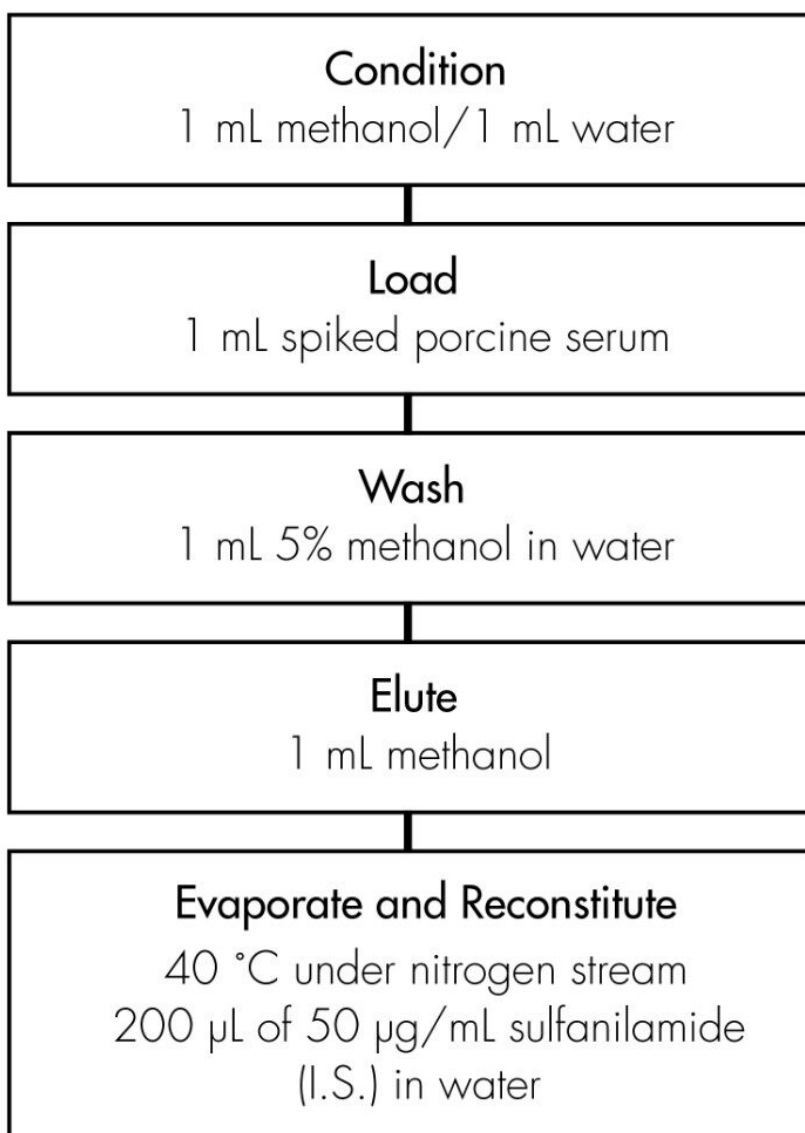
Injection volume: 50 μ L of reconstituted porcine serum extract

Temperature: 30 °C

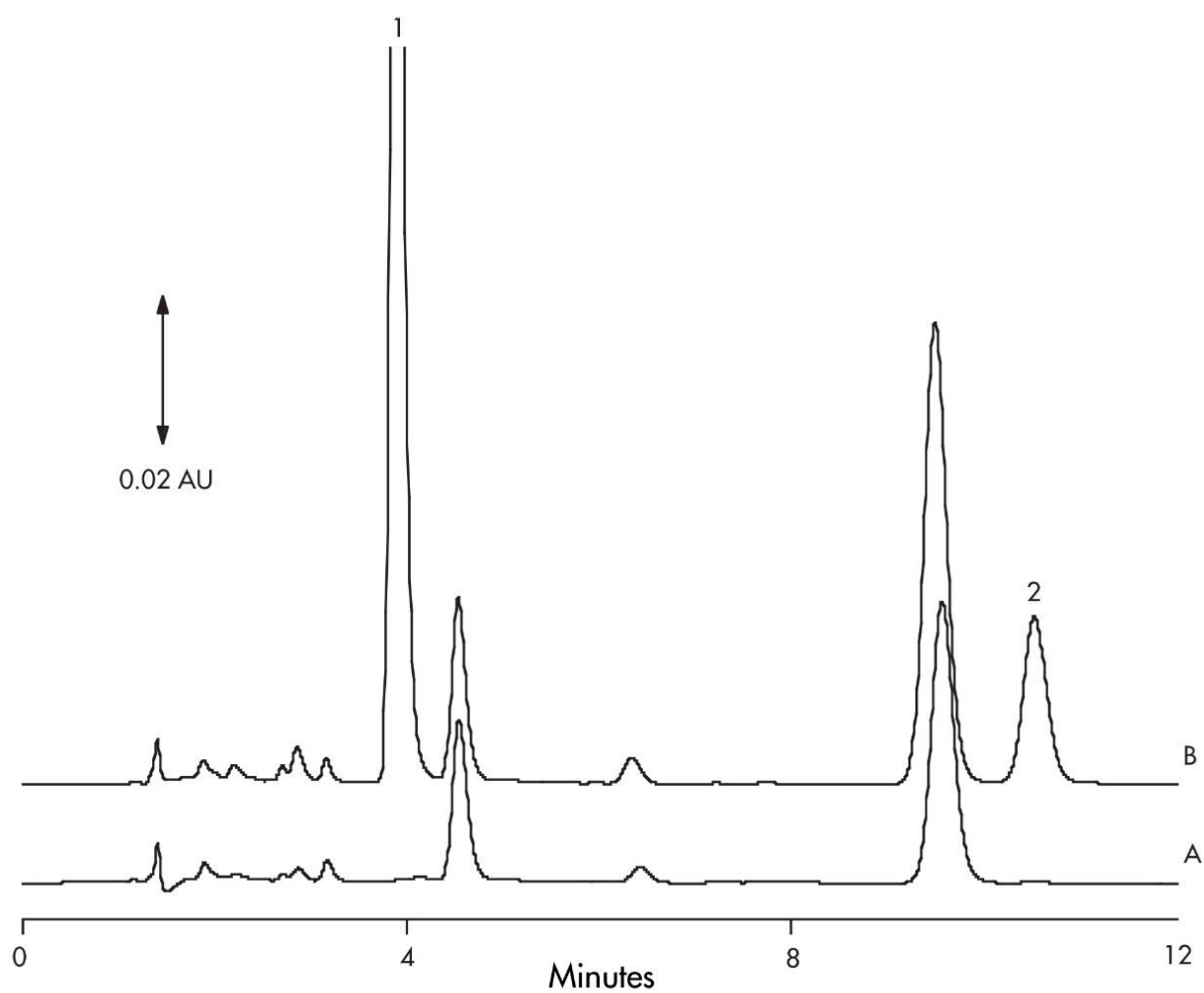
Detection: UV @ 220 nm

Oasis[®] HLB Extraction Method

Oasis[®] HLB 1 cc/30 mg Extraction Cartridge
Part Number WAT094225



Results and Discussion



Compound	Concentration µg/mL	% Recovery	%RSD (n=6)
Acetaminophen	0.100	107%	1.5%
	0.500	101%	0.40%

Featured Products

WA31763.13, June 2003

© 2021 Waters Corporation. All Rights Reserved.