

Nota de aplicación

## Pseudoephedrine HCL

---

Waters Corporation



This is an Application Brief and does not contain a detailed Experimental section.

---

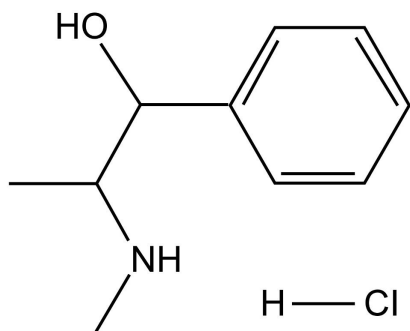
### Abstract

This application brief highlights the analysis of Pseudoephedrine HCL using Symmetry columns.

---

## Introduction

Pseudoephedrine HCL is analysed using Symmetry Guard Columns.



## 1. Pseudoephedrine HCL

---

### Experimental

#### HPLC Method

Column:	Symmetry C <sub>8</sub> , 3.9 x 150 mm, 5 μm
Guard column:	Symmetry Guard Column, 3.9 x 20 mm, 5 μm
Part numbers:	Column - WAT046970, Guard - WAT054250
Mobile phase:	50 mM potassium phosphate, pH 3.0/methanol 85:15
Flow rate:	1.0 mL/min
Injection volume:	5 μL of 2.88 μg/mL sample

Detection:

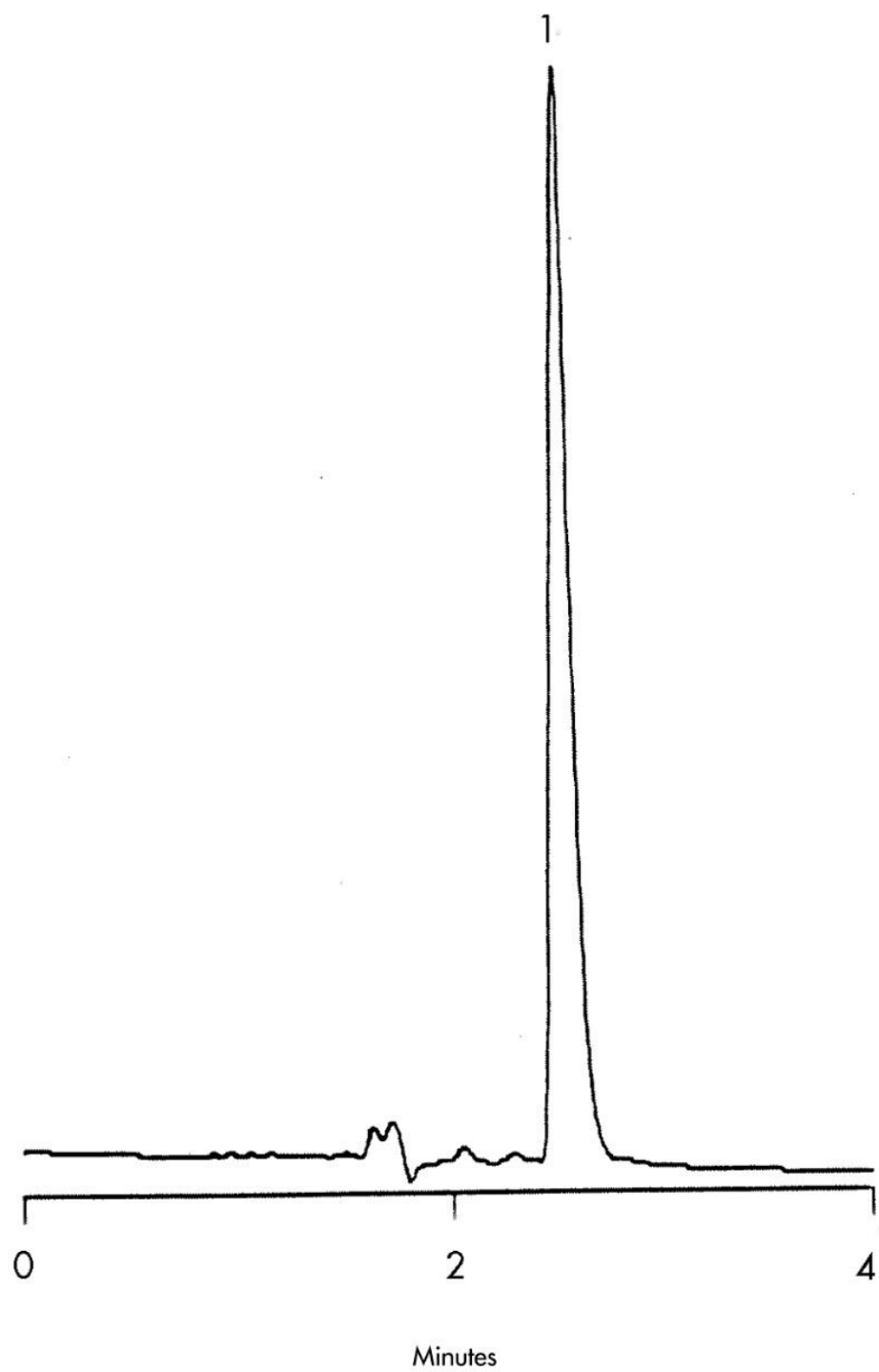
UV @ 261 nm

## USP Tailing Factors

1.165

---

## Results and Discussion



---

Featured Products

WA31763.136, June 2003

© 2021 Waters Corporation. All Rights Reserved.