

응용 자료

Pseudoephedrine HCL

Waters Corporation



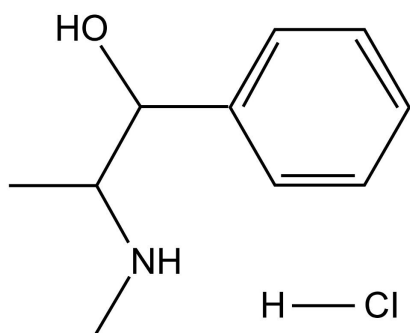
This is an Application Brief and does not contain a detailed Experimental section.

Abstract

This application brief highlights the analysis of Pseudoephedrine HCL using Symmetry columns.

Introduction

Pseudoephedrine HCL is analysed using Symmetry Guard Columns.



1. Pseudoephedrine HCL

Experimental

HPLC Method

Column:	Symmetry C ₈ , 3.9 x 150 mm, 5 μm
Guard column:	Symmetry Guard Column, 3.9 x 20 mm, 5 μm
Part numbers:	Column - WAT046970, Guard - WAT054250
Mobile phase:	50 mM potassium phosphate, pH 3.0/methanol 85:15
Flow rate:	1.0 mL/min
Injection volume:	5 μL of 2.88 μg/mL sample

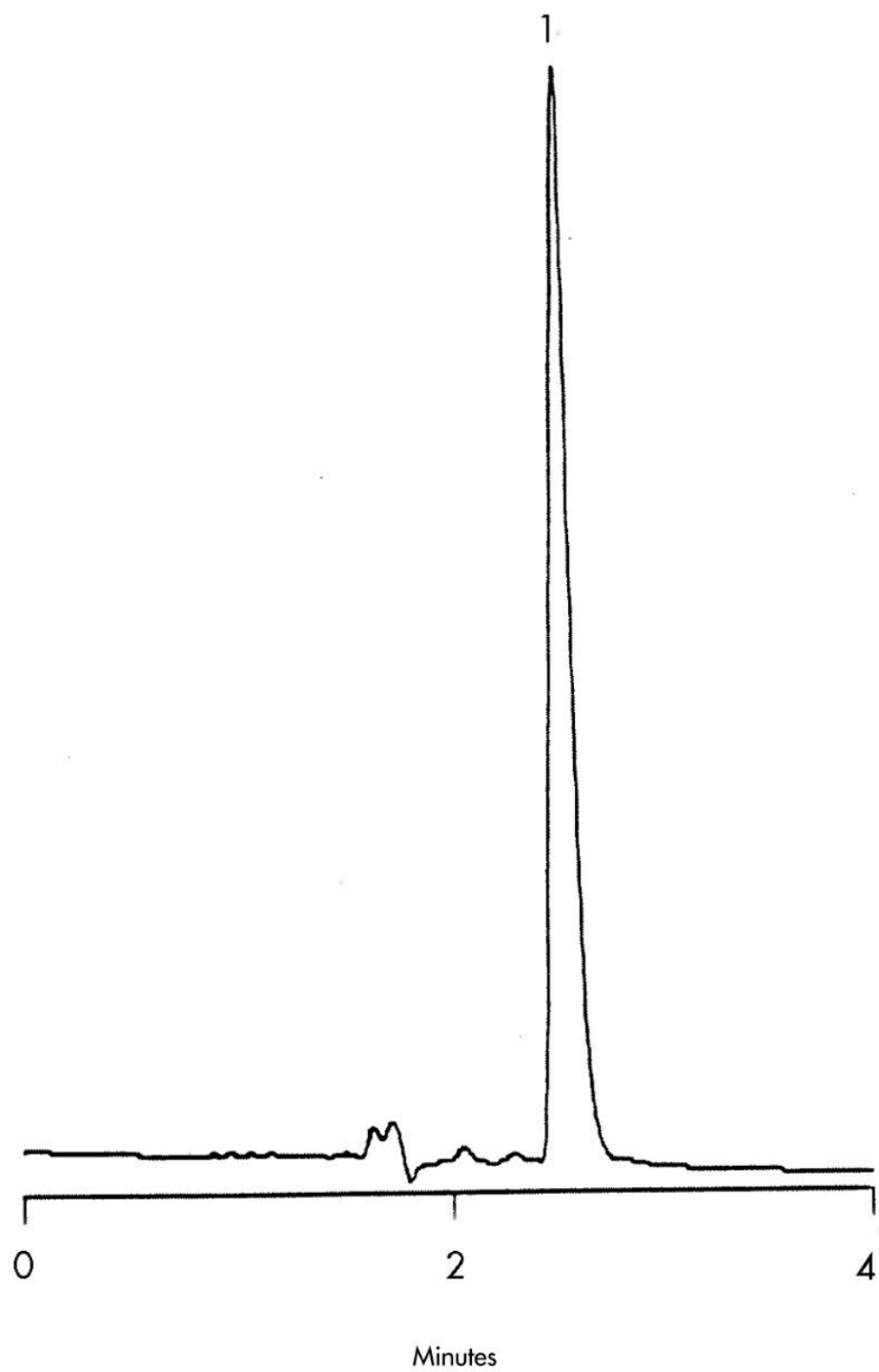
Detection:

UV @ 261 nm

USP Tailing Factors

1.165

Results and Discussion



Featured Products

WA31763.136, June 2003

© 2021 Waters Corporation. All Rights Reserved.