

Nota de aplicación

Pseudoephedrine HCL and Chlorpheniramine

Waters Corporation



This is an Application Brief and does not contain a detailed Experimental section.

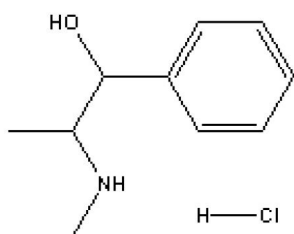
Abstract

This application brief highlights the analysis of Pseudoephedrine HCL and Chlorpheniramine using Symmetry columns.

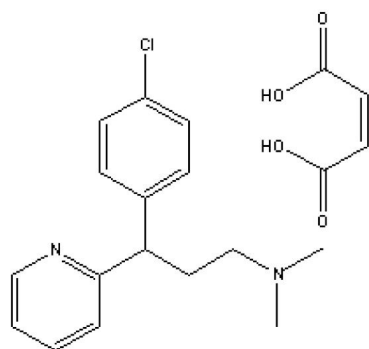
Introduction

The compounds analyzed in this study are:

1. Pseudoephedrine HCL
2. Chlorpheniramine



1. Pseudoephedrine HCL



2. Chlorpheniramine Maleate

Experimental

HPLC Method

| | |
|-------------------|---|
| Column: | Symmetry C ₁₈ , 3.9 x 150 mm, 5 μm |
| Part number: | WAT046970 |
| Mobile phase A: | 50 mM potassium phosphate, pH 3.0 |
| Mobile phase B: | Acetonitrile |
| Flow rate: | 1.0 mL/min |
| Injection volume: | 5 μL of 1.8 mg/mL pseudoephedrine and 120 μg/mL chlorpheniramine sample |
| Detection: | UV @ 261 nm |

Gradient Table

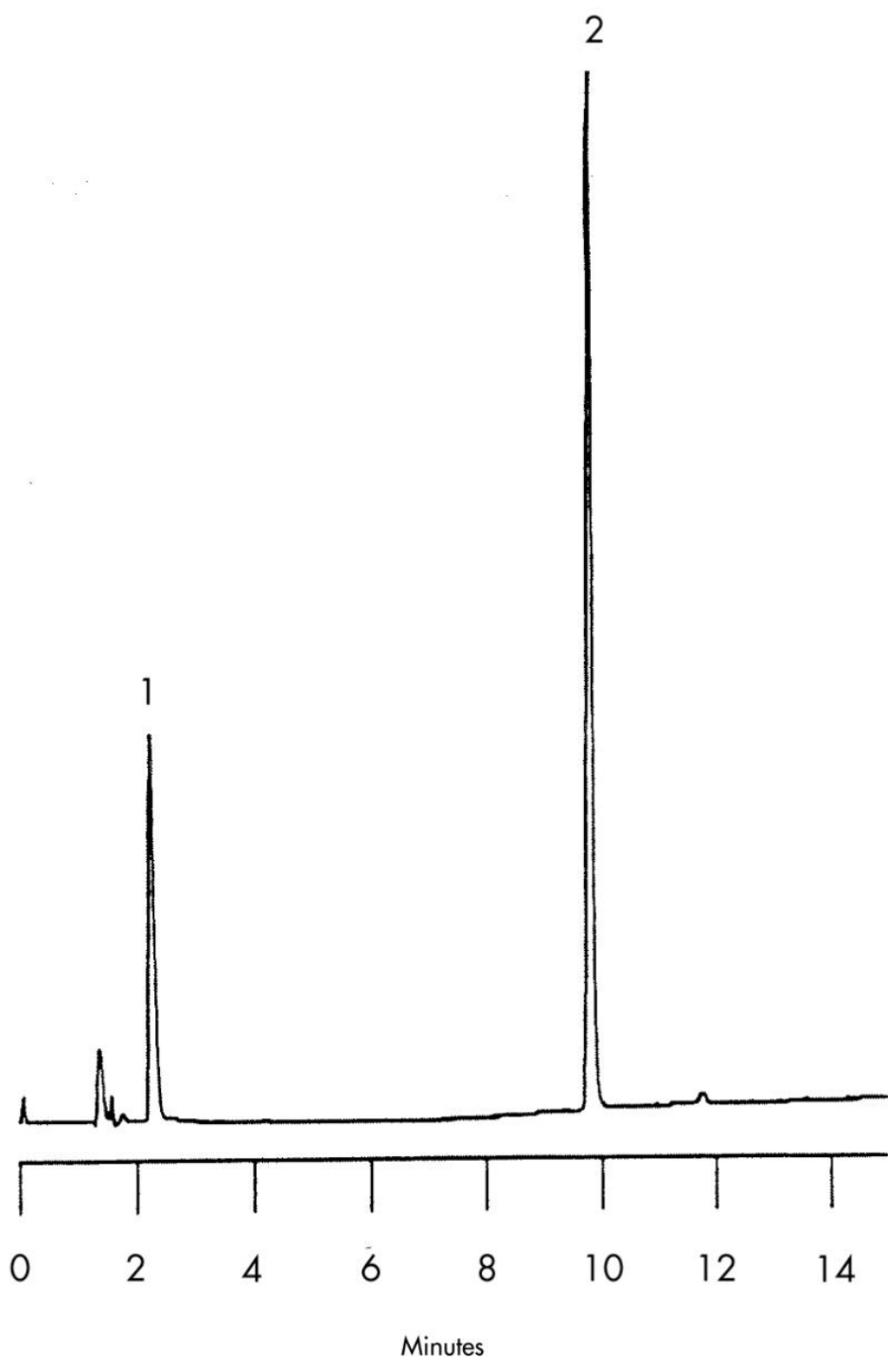
| Time (min) | Profile | |
|------------|---------|----|
| | %A | %B |
| 0 | 85 | 15 |
| 1 | 85 | 15 |
| 15 | 50 | 50 |

USP Tailing Factors

1.1.7

2.1.2

Results and Discussion



Featured Products

WA31763.137, June 2003

© 2021 Waters Corporation. All Rights Reserved.