

응용 자료

Pseudoephedrine HCL and Chlorpheniramine

Waters Corporation



This is an Application Brief and does not contain a detailed Experimental section.

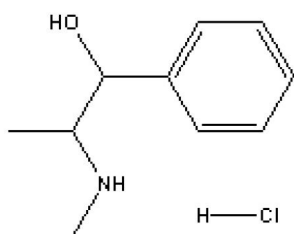
Abstract

This application brief highlights the analysis of Pseudoephedrine HCL and Chlorpheniramine using Symmetry columns.

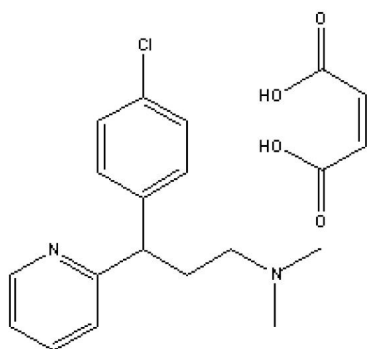
Introduction

The compounds analyzed in this study are:

1. Pseudoephedrine HCL
2. Chlorpheniramine



1. Pseudoephedrine HCL



2. Chlorpheniramine Maleate

Experimental

HPLC Method

Column:	Symmetry C ₁₈ , 3.9 x 150 mm, 5 μm
Part number:	WAT046970
Mobile phase A:	50 mM potassium phosphate, pH 3.0
Mobile phase B:	Acetonitrile
Flow rate:	1.0 mL/min
Injection volume:	5 μL of 1.8 mg/mL pseudoephedrine and 120 μg/mL chlorpheniramine sample
Detection:	UV @ 261 nm

Gradient Table

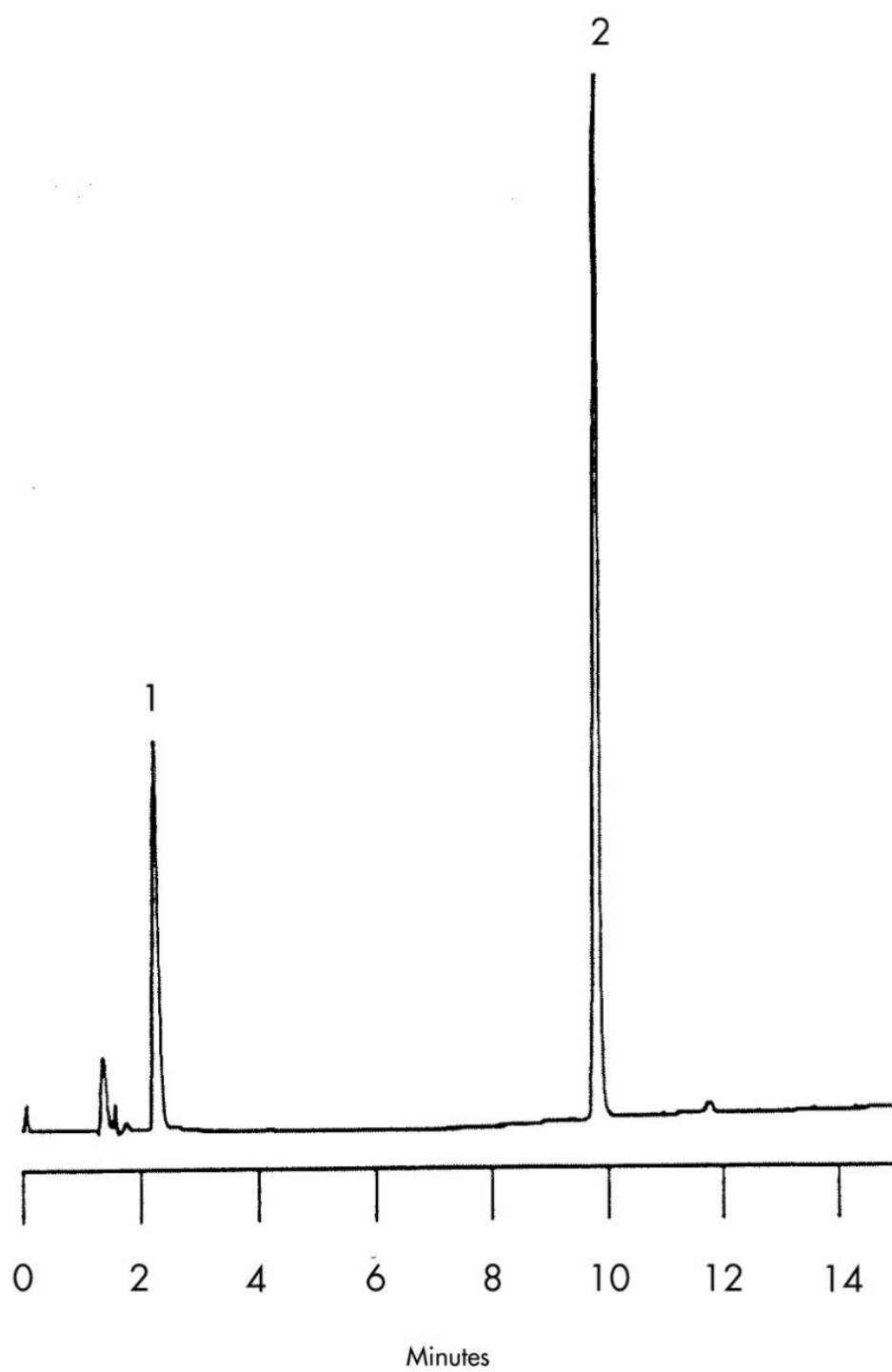
Time (min)	Profile	
	%A	%B
0	85	15
1	85	15
15	50	50

USP Tailing Factors

1.1.7

2.1.2

Results and Discussion



Featured Products

WA31763.137, June 2003

© 2021 Waters Corporation. All Rights Reserved.