

Pseudoephedrine HCL and Chlorpheniramine

Waters Corporation



This is an Application Brief and does not contain a detailed Experimental section.

Abstract

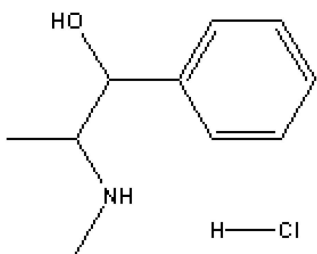
This application brief highlights the analysis of Pseudoephedrine HCL and Chlorpheniramine using Symmetry

columns.

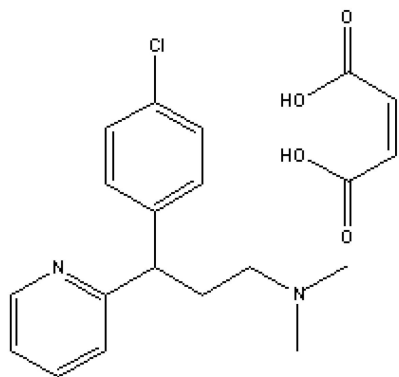
Introduction

The compounds analyzed in this study are:

1. Pseudoephedrine HCL
2. Chlorpheniramine



1. Pseudoephedrine HCL



2. Chlorpheniramine Maleate

Experimental

HPLC Method

Column: Symmetry C₁₈, 3.9 x 150 mm, 5 μm

Part number: WAT046970

Mobile phase A: 50 mM potassium phosphate, pH 3.0

Mobile phase B: Acetonitrile

Flow rate: 1.0 mL/min

Injection volume: 5 μL of 1.8 mg/mL pseudoephedrine and 120 μg/m chlorpheniramine sample

Detection: UV @ 261 nm

Gradient Table

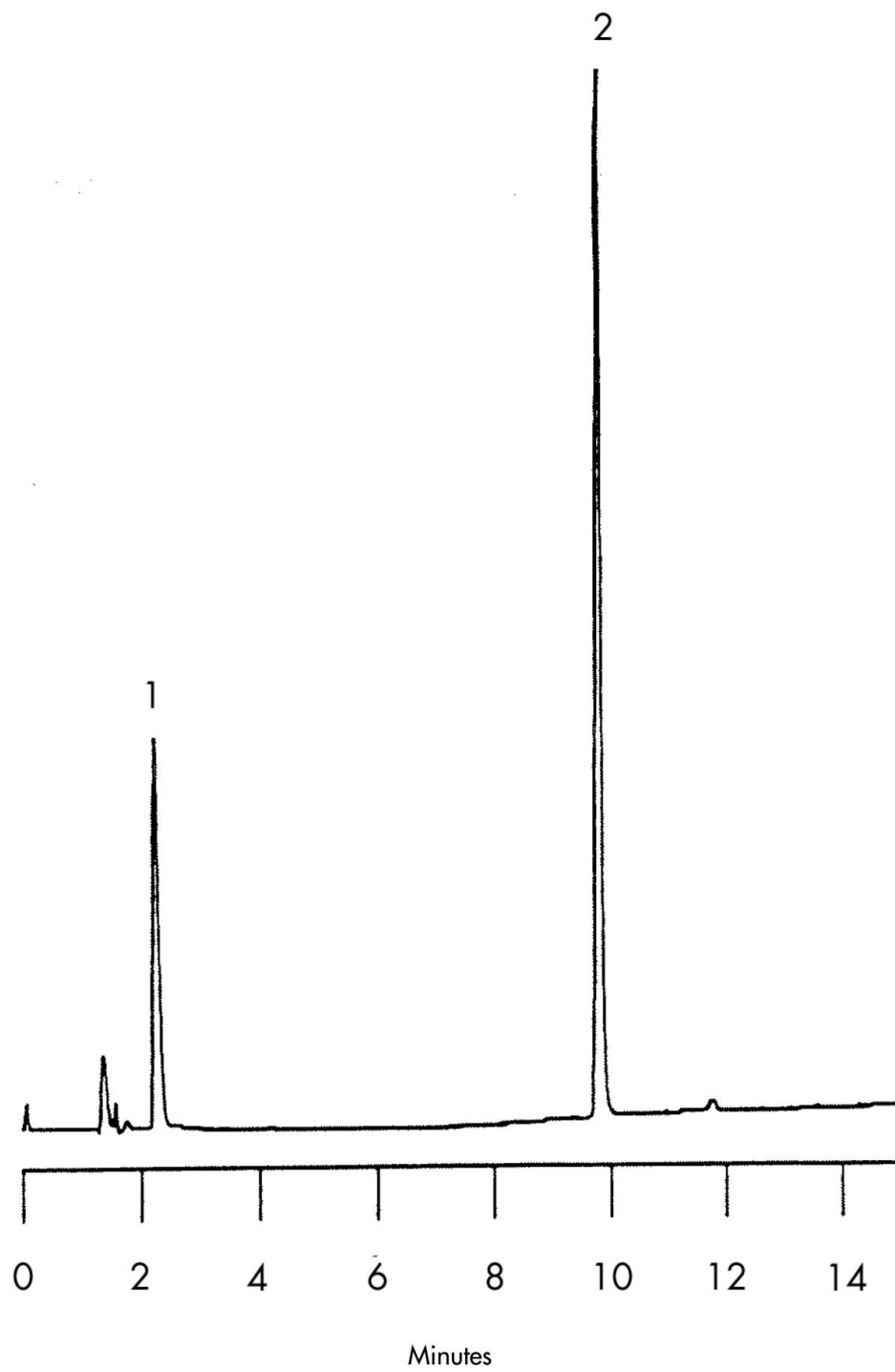
Time (min)	Profile	
	%A	%B
0	85	15
1	85	15
15	50	50

USP Tailing Factors

1.1.7

2.1.2

Results and Discussion



Featured Products

WA31763.137, June 2003



© 2021 Waters Corporation. All Rights Reserved.