

Nota de aplicación

Pseudoephedrine HCL and Codeine

Waters Corporation



This is an Application Brief and does not contain a detailed Experimental section.

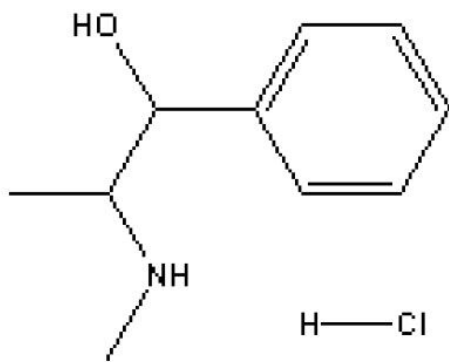
Abstract

This application brief highlights the analysis of Pseudoephedrine HCL and Codeine using Symmetry Shield Columns.

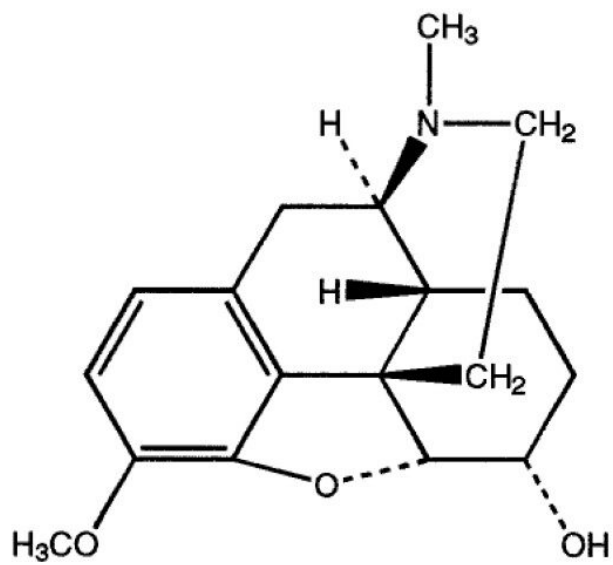
Introduction

The compounds analyzed in this study are:

1. Pseudoephedrine HCL
2. Codeine



1. Pseudoephedrine HCL



2. Codeine

Experimental

HPLC Method

Column:	SymmetryShield RP ₈ , 3.9 x 150 mm, 5 µm
Part number:	WAT200655
Mobile phase A:	50 mM potassium phosphate, pH 7
Mobile phase B:	Acetonitrile
Flow rate:	1.0 mL/min
Injection volume:	5 µL of 2 mg/mL pseudoephedrine and 0.2 mg/mL codeine
Detection:	UV @ 2541 nm

Gradient

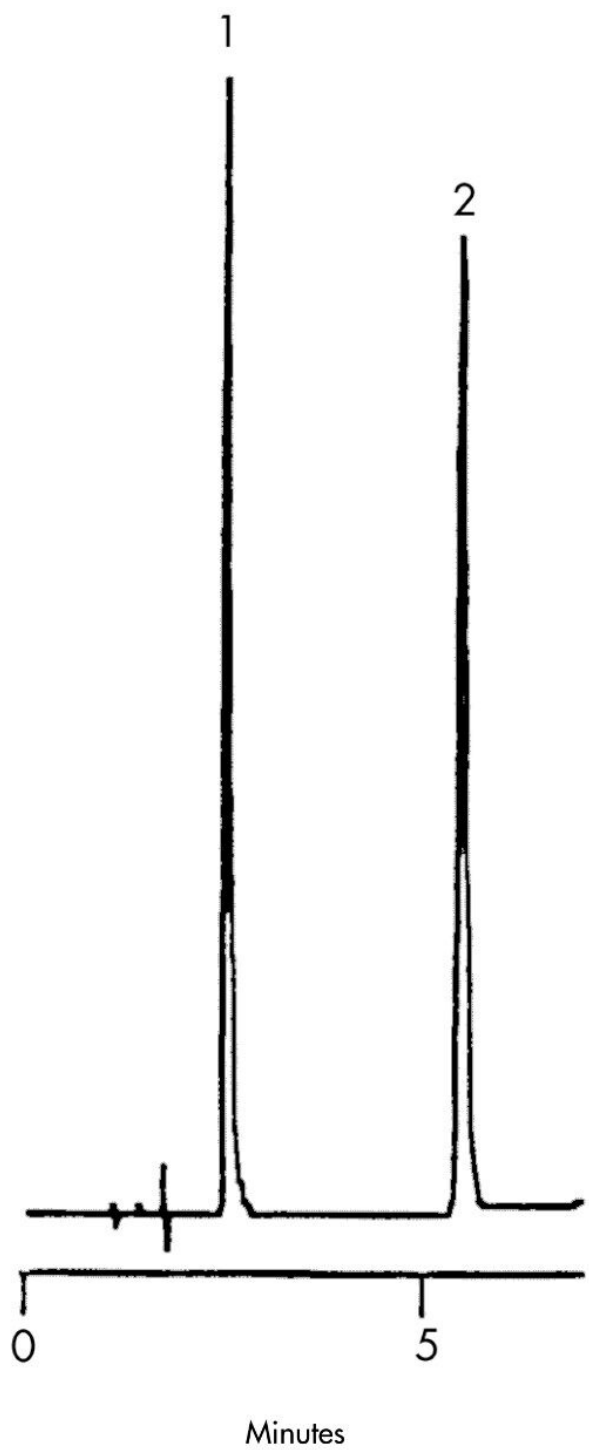
Time (min)	Profile	
	%A	%B
0	85	15
15	50	50

USP Tailing Factors

1.1.8

2.1.1

Results and Discussion



Featured Products

WA31763.139, June 2003

© 2021 Waters Corporation. All Rights Reserved.