

Note d'application

## Pseudoephedrine HCL and Codeine

---

Waters Corporation



This is an Application Brief and does not contain a detailed Experimental section.

---

### Abstract

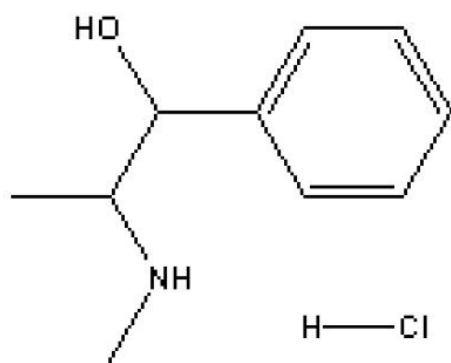
This application brief highlights the analysis of Pseudoephedrine HCL and Codeine using Symmetry Shield Columns.

---

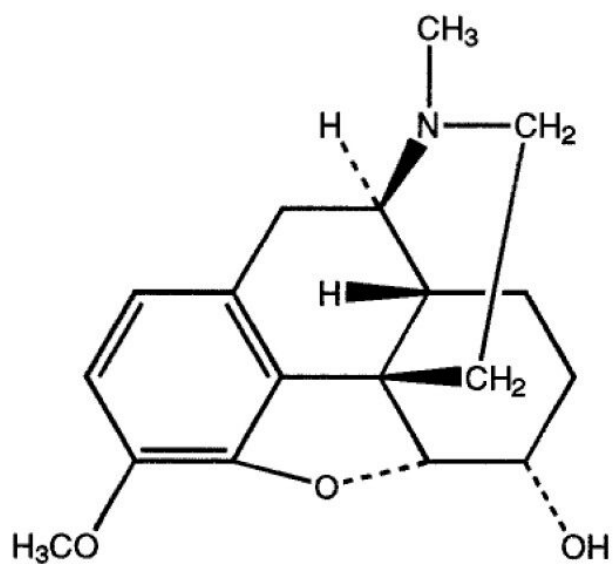
## Introduction

The compounds analyzed in this study are:

1. Pseudoephedrine HCL
2. Codeine



## 1. Pseudoephedrine HCL



## 2. Codeine

---

Experimental

## HPLC Method

Column:	SymmetryShield RP <sub>8</sub> , 3.9 x 150 mm, 5 µm
Part number:	WAT200655
Mobile phase A:	50 mM potassium phosphate, pH 7
Mobile phase B:	Acetonitrile
Flow rate:	1.0 mL/min
Injection volume:	5 µL of 2 mg/mL pseudoephedrine and 0.2 mg/mL codeine
Detection:	UV @ 2541 nm

## Gradient

Time (min)	Profile	
	%A	%B
0	85	15
15	50	50

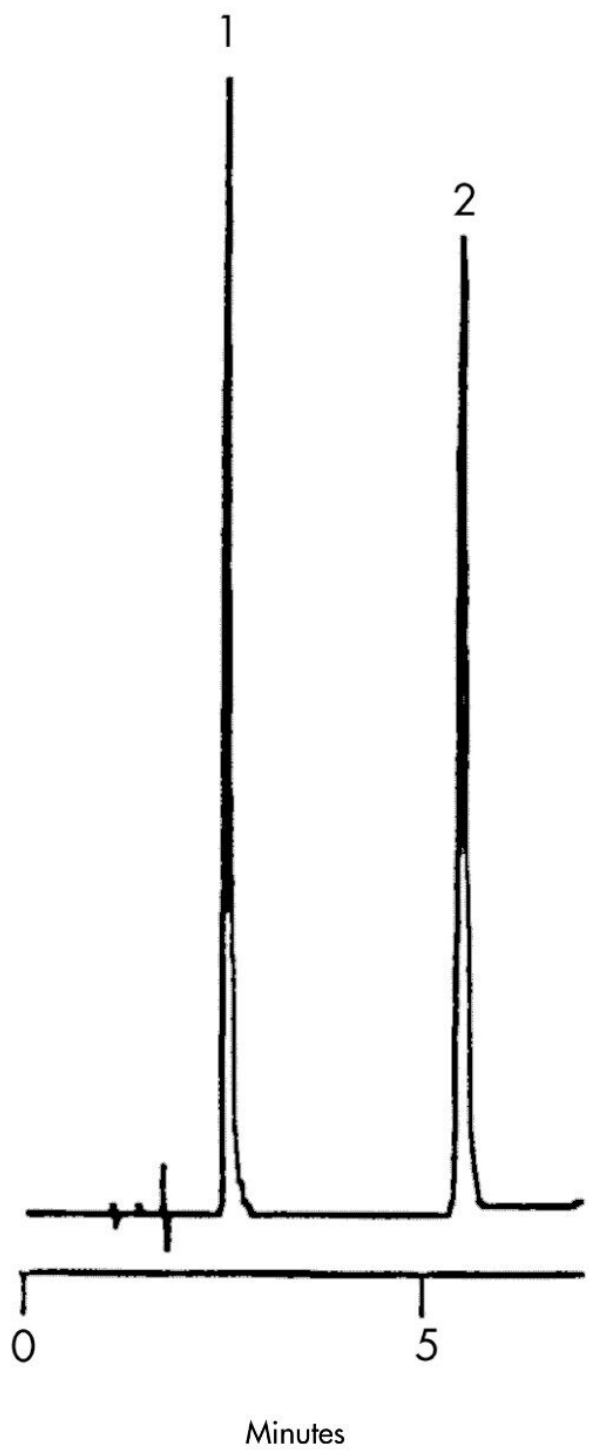
## USP Tailing Factors

1.1.8

2.1.1

---

## Results and Discussion



---

Featured Products

WA31763.139, June 2003

© 2021 Waters Corporation. All Rights Reserved.