

Succinimides

Waters Corporation



This is an Application Brief and does not contain a detailed Experimental section.

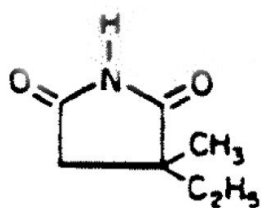
Abstract

This application brief demonstrates analysis of Succinimides.

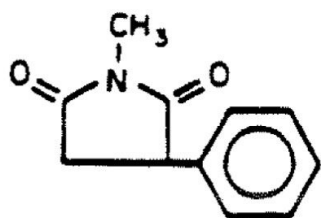
Introduction

The compounds used in this study are -

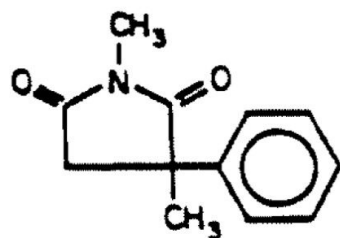
Compounds	USP Tailing Factors
Ethosuximide	0.96
Phensuximide	0.92
Methsuximide	0.91



1. Ethosuximide



2. Phensuximide



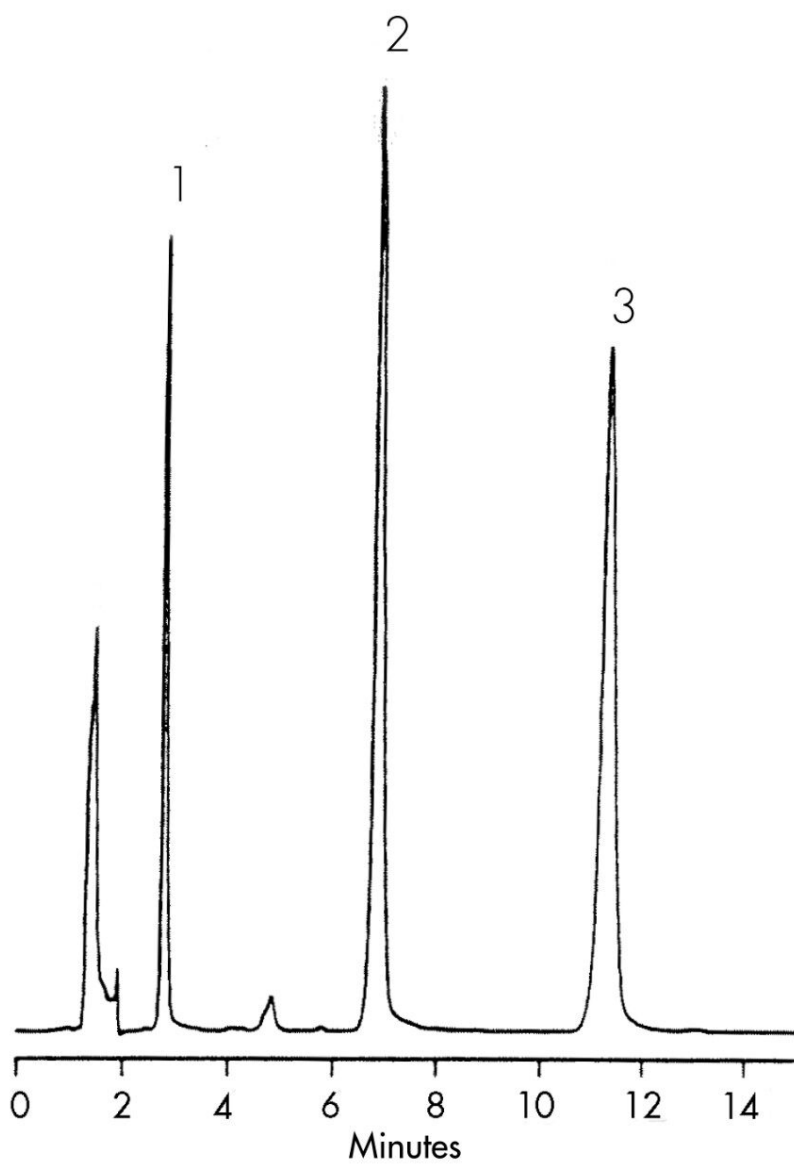
3. Methsuximide

Experimental

HPLC Method

Column:	Symmetry C ₈ , 3.9 x 150 mm, 5 μm
Guard column:	Sentry Guard Column 3.9 x 20 mm, 5 μm
Part numbers:	Column - WAT046970, Guard - WAT054250
Mobile phase:	100 mM potassium phosphate, pH 6.9/methanol/water 20:30:50
Flow rate:	1.0 mL/min
Injection volume:	10 μL of 40–500 μg/mL sample
Detection:	UV @ 214 nm

Results and Discussion



Featured Products

WA31763.153, June 2003

© 2021 Waters Corporation. All Rights Reserved.