

Succinimides

Waters Corporation



This is an Application Brief and does not contain a detailed Experimental section.

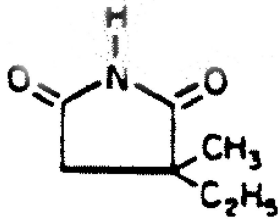
Abstract

This application brief demonstrates analysis of Succinimides.

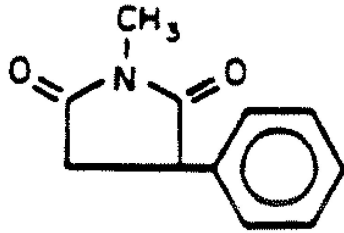
Introduction

The compounds used in this study are -

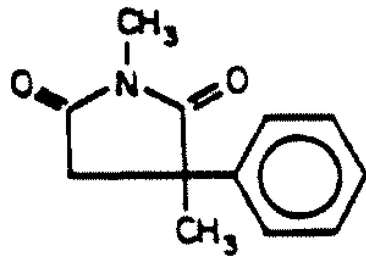
Compounds	USP Tailing Factors
Ethosuximide	0.96
Phensuximide	0.92
Methsuximide	0.91



1. Ethosuximide



2. Phensuximide



3. Methsuximide

Experimental

HPLC Method

Column:

Symmetry C₈, 3.9 x 150 mm, 5 μm

Guard column:

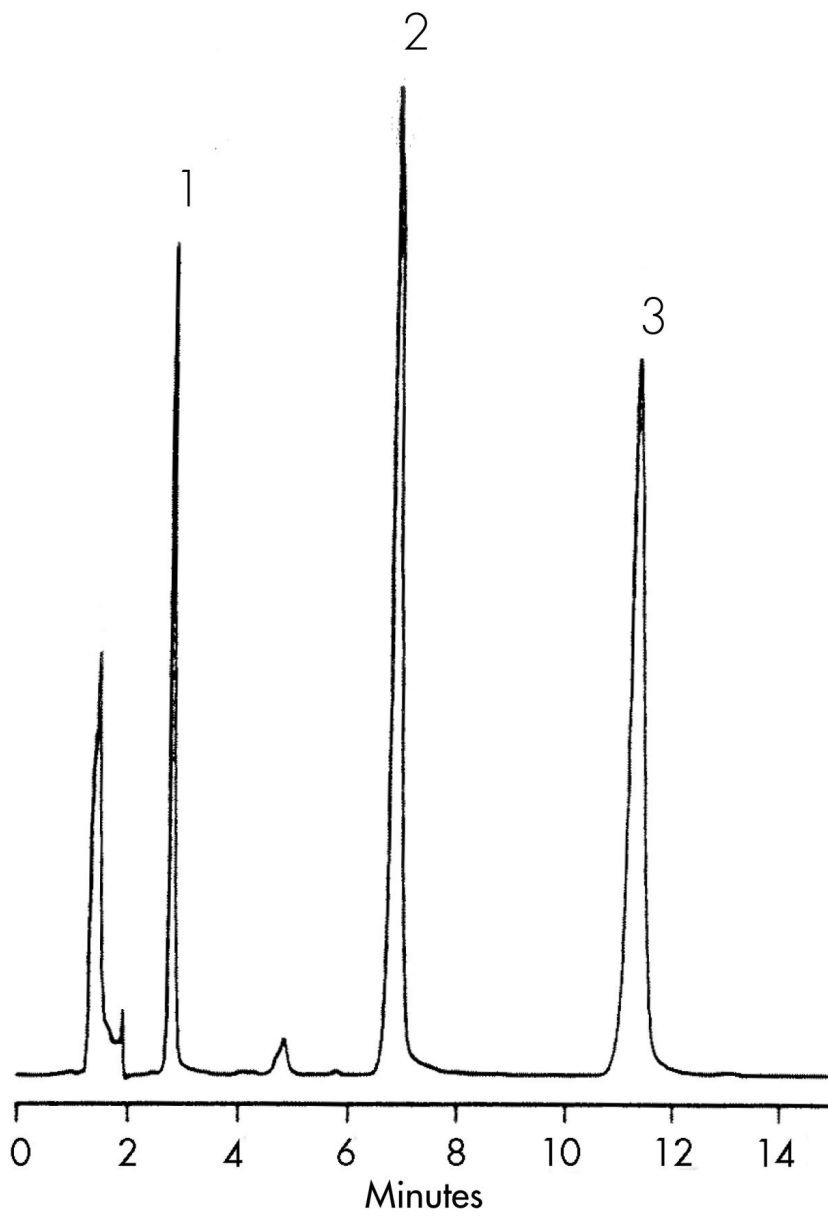
Sentry Guard Column 3.9 x 20 mm, 5 μm

Part numbers:

Column - WAT046970, Guard - WAT054250

Mobile phase:	100 mM potassium phosphate, pH 6.9/methanol/water 20:30:50
Flow rate:	1.0 mL/min
Injection volume:	10 μ L of 40–500 μ g/mL sample
Detection:	UV @ 214 nm

Results and Discussion



Featured Products

WA31763.153, June 2003



© 2021 Waters Corporation. All Rights Reserved.