

Waters™

應用手冊

Sulfa Drugs

Waters Corporation



This is an Application Brief and does not contain a detailed Experimental section.

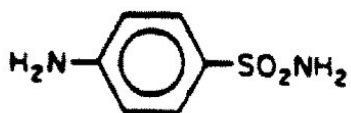
Abstract

This application brief demonstrates analysis of sulfa drugs.

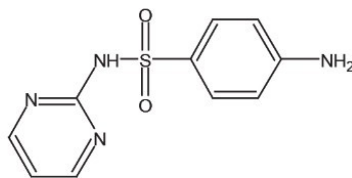
Introduction

The compounds used in this study are -

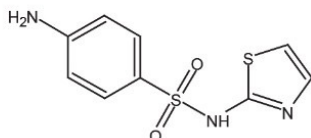
Compounds	USP Tailing Factors
Sulfanilamide	1.27
Sulfadiazine	1.19
Sulfathiazole	1.18
Sulfamerazine	1.15
Sulfamethazine	1.12
Succinylsulfathiazole	1.11



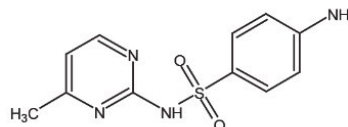
1. Sulfanilamide



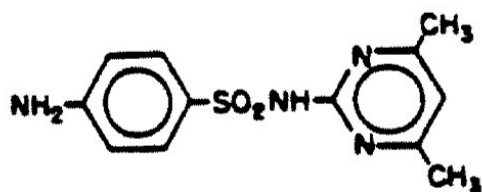
2. Sulfadiazine



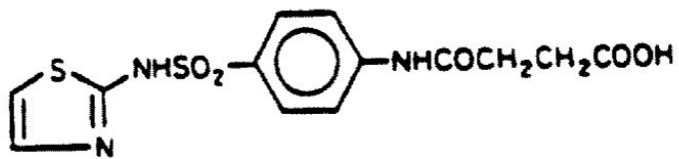
3. Sulfathiazole



4. Sulfamerazine



5. Sulfamethazine



6. Succinylsulfathiazole

Experimental

HPLC Method

Column:

Symmetry C₈, 3.9 x 150 mm, 5 μm

Guard column:

Sentry Guard Column 3.9 x 20 mm, 5 μm

Part numbers:

Column - WAT046970, Guard - WAT054250

Mobile phase:

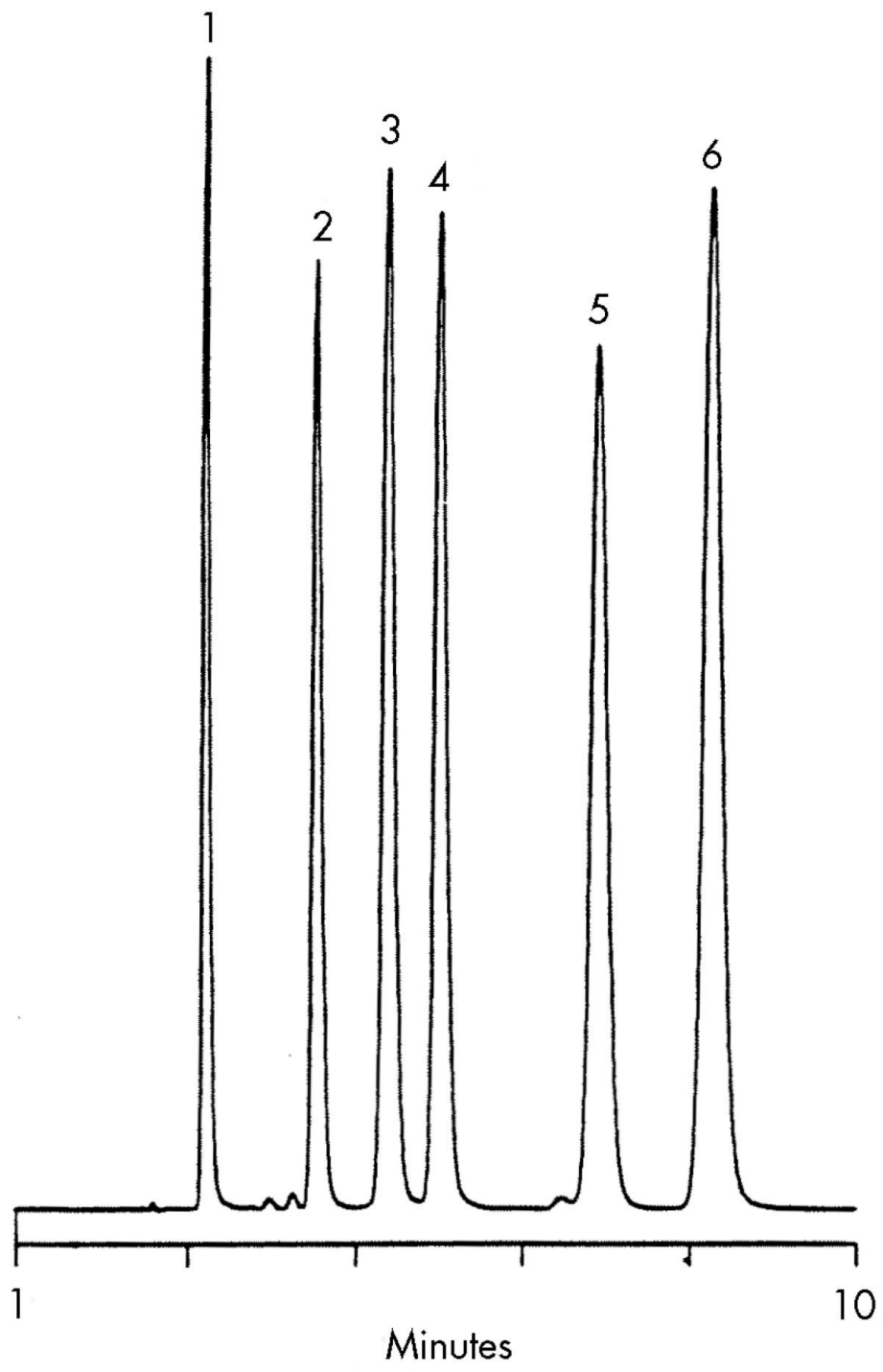
Water/methanol/glacial acetic acid 79:20:1

Flow rate: 1.0 mL/min

Injection volume: 10 μ L of sample with components at 10 to 39 μ g/mL

Detection: UV @ 254 nm

Results and Discussion



Featured Products

WA31763.154, June 2003



© 2021 Waters Corporation. All Rights Reserved.