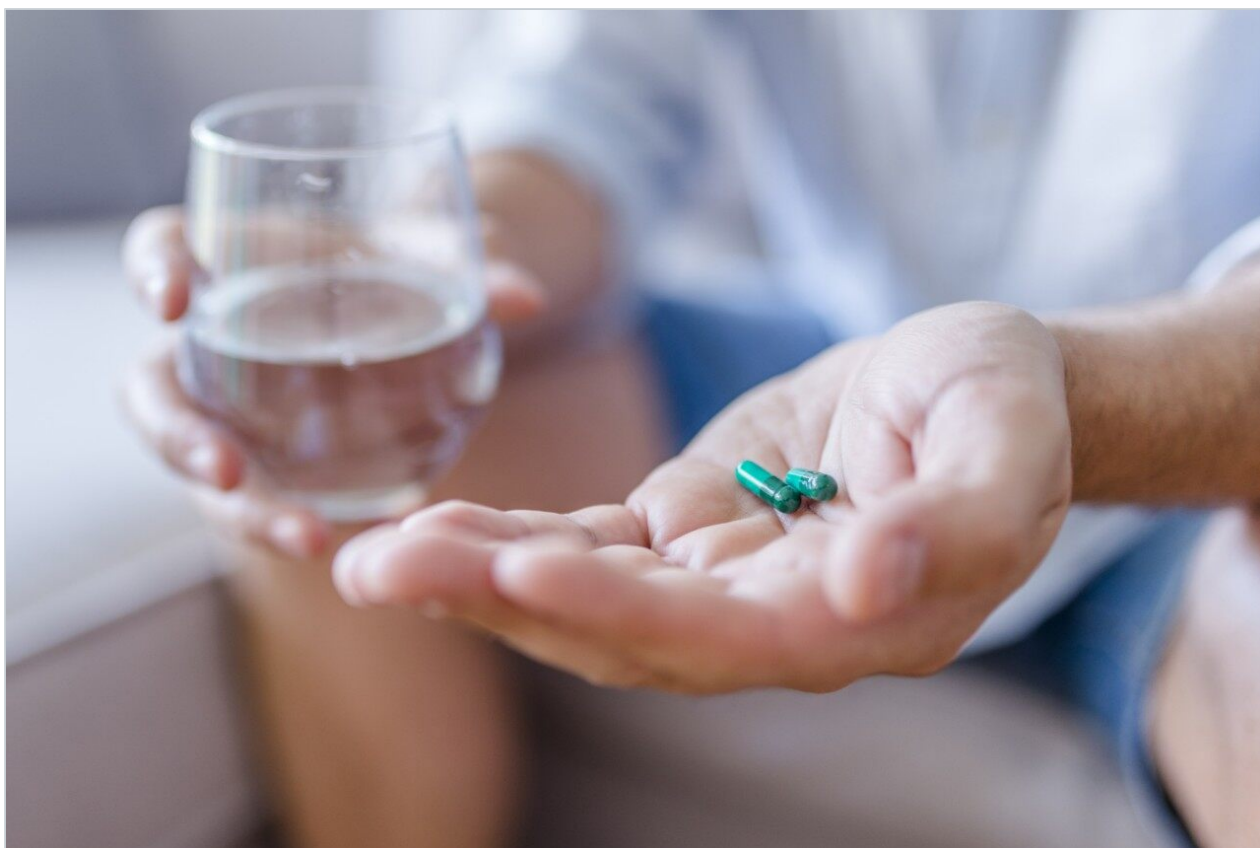


Application Note

## Sulfa Drugs – 2.1 x 20 mm Intelligent Speed Separation

---

Waters Corporation



This is an Application Brief and does not contain a detailed Experimental section.

---

### Abstract

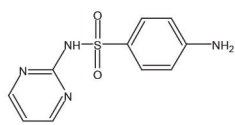
This application brief highlights the analysis of sulfa drugs using Intelligent Speed Separation Symmetry columns.

---

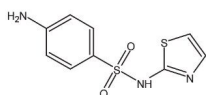
## Introduction

Compounds used in this study are:

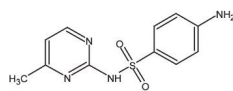
1. Sulfadiazine
2. Sulfathiazole
3. Sulfamerazine
4. Sulfadimidine
5. Sulfamethoxazole
6. Sulfisoxazole
7. Sulfadimethoxine



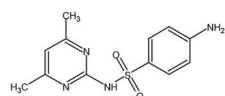
**1. Sulfadiazine**



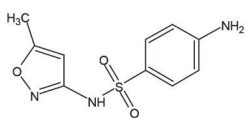
**2. Sulfathiazole**



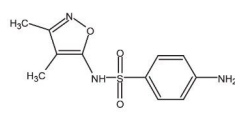
**3. Sulfamerazine**



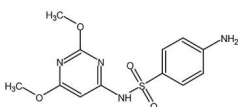
**4. Sulfadimidine**



**5. Sulfamethoxazole**



**6. Sulfisoxazole**



**7. Sulfadimethoxine**

---

## Experimental

### HPLC Method

Column: Symmetry C<sub>18</sub>, 2.1 x 20 mm, 3.5 μm IS (p/n: 186002066)

Mobile phase A: 0.1% HCOOH in Water

Mobile phase B: 0.1% HCOOH in MeOH

Flow rate: 0.6 mL/min

Injection volume: 10 μL

Temperature: 30° C

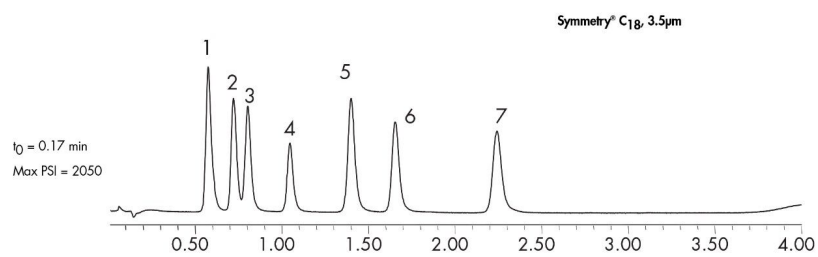
Detection: UV @ 270 nm

### Gradient

Time (min)	Profile	
	%A	%B
0	100	0
4	50	50

---

## Results and Discussion



WA31763.156, June 2003