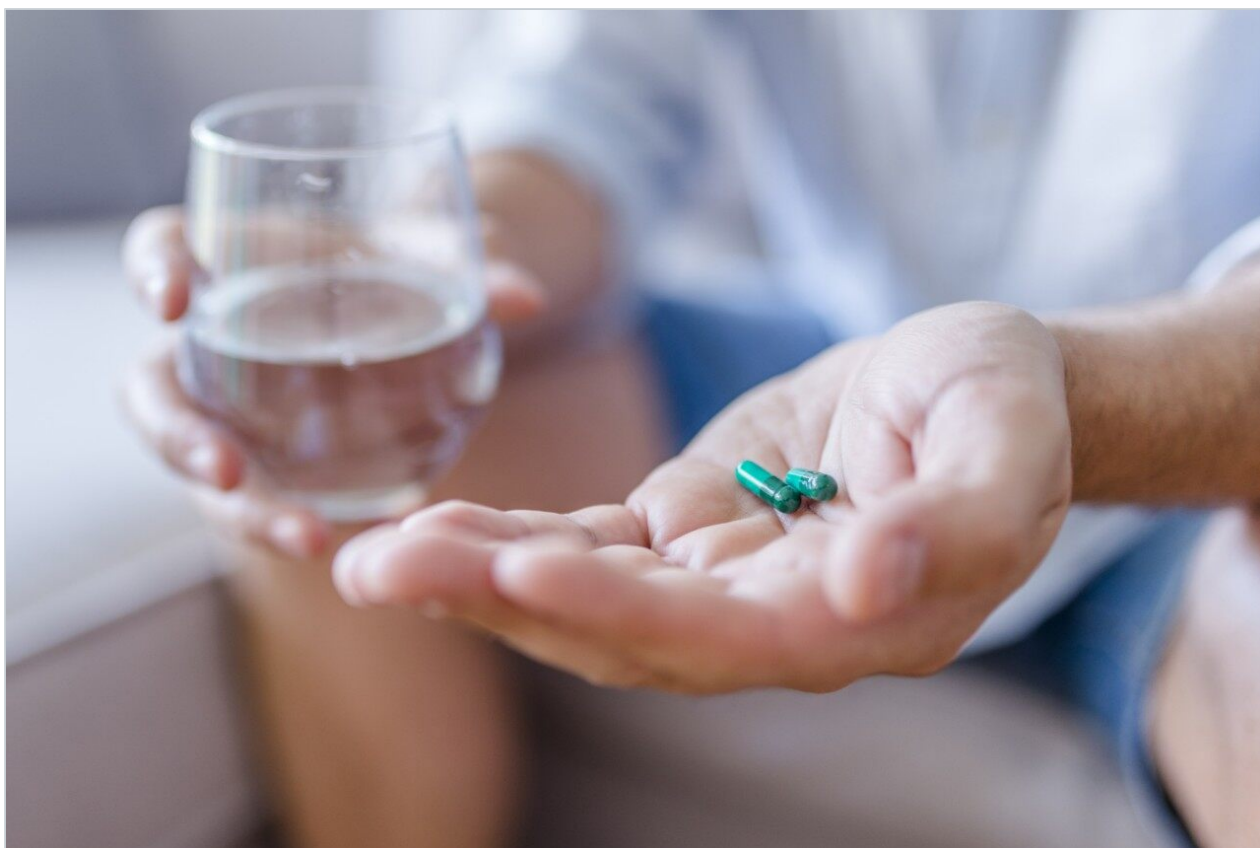


Note d'application

Sulfa Drugs – 4.6 x 20 mm Intelligent Speed Separation

Waters Corporation



This is an Application Brief and does not contain a detailed Experimental section.

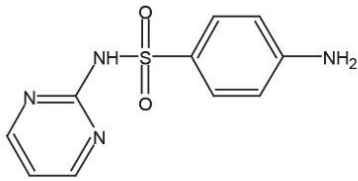
Abstract

This application brief highlights the analysis of sulfa drugs using Intelligent Speed Symmetry Columns.

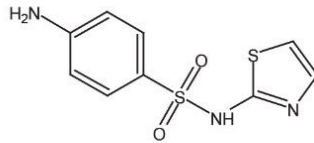
Introduction

Compounds used in this study are:

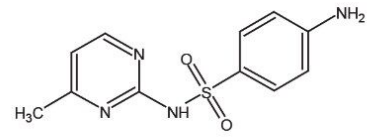
1. Sulfadiazine
2. Sulfathiazole
3. Sulfamerazine
4. Sulfadimidine
5. Sulfamethoxazole
6. Sulfisoxazole
7. Sulfadimethoxine



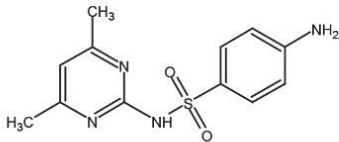
1. Sulfadiazine



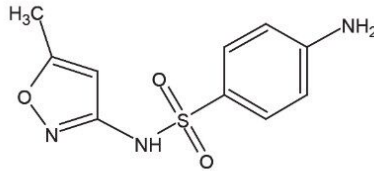
2. Sulfathiazole



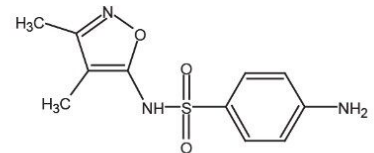
3. Sulfamerazine



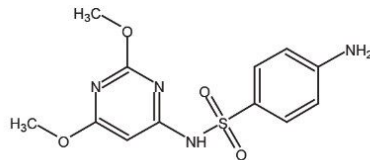
4. Sulfadimidine



5. Sulfamethoxazole



6. Sulfisoxazole



7. Sulfadimethoxine

Experimental

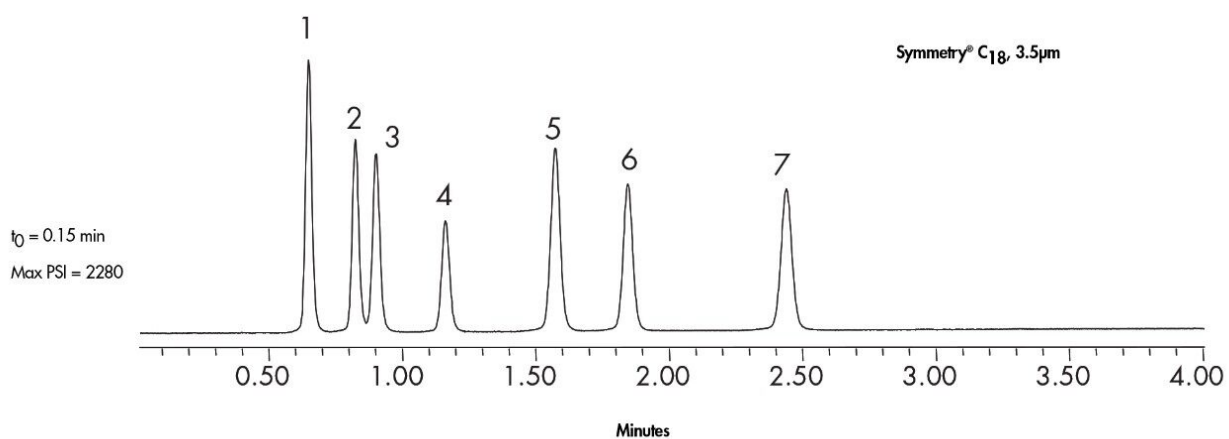
HPLC Method

Column:	Symmetry C ₁₈ , 4.6 x 20 mm, 3.5 μm IS (p/n: 186002090)
Mobile phase A:	0.1% HCOOH in Water
Mobile phase B:	0.1% HCOOH in MeOH
Flow rate:	3.0 mL/min

Injection volume: 10 μ L
Temperature: 30° C
Detection: UV @ 270 nm

Time (min)	Profile	
	%A	%B
0	100	0
4	50	50

Results and Discussion



Featured Products

WA31763.157, June 2003

© 2021 Waters Corporation. All Rights Reserved.