

응용 자료

## Sulfa Drugs – 4.6 x 20 mm Intelligent Speed Separation

---

Waters Corporation



This is an Application Brief and does not contain a detailed Experimental section.

---

### Abstract

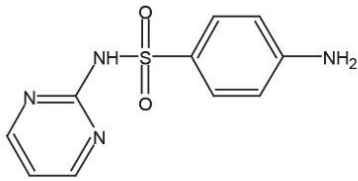
This application brief highlights the analysis of sulfa drugs using Intelligent Speed Symmetry Columns.

---

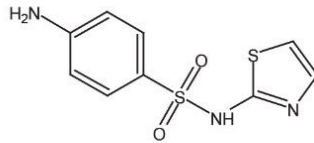
## Introduction

Compounds used in this study are:

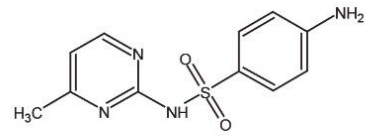
1. Sulfadiazine
2. Sulfathiazole
3. Sulfamerazine
4. Sulfadimidine
5. Sulfamethoxazole
6. Sulfisoxazole
7. Sulfadimethoxine



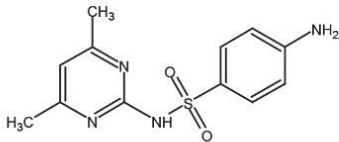
**1. Sulfadiazine**



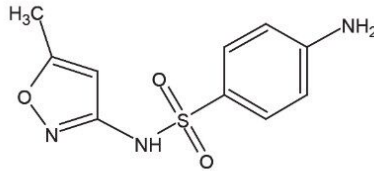
**2. Sulfathiazole**



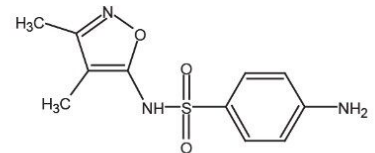
**3. Sulfamerazine**



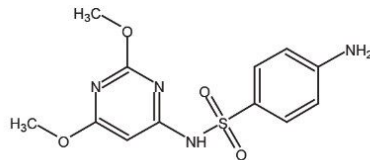
**4. Sulfadimidine**



**5. Sulfamethoxazole**



**6. Sulfisoxazole**



**7. Sulfadimethoxine**

---

## Experimental

### HPLC Method

Column:	Symmetry C <sub>18</sub> , 4.6 x 20 mm, 3.5 μm IS (p/n: 186002090)
Mobile phase A:	0.1% HCOOH in Water
Mobile phase B:	0.1% HCOOH in MeOH
Flow rate:	3.0 mL/min

Injection volume: 10  $\mu$ L

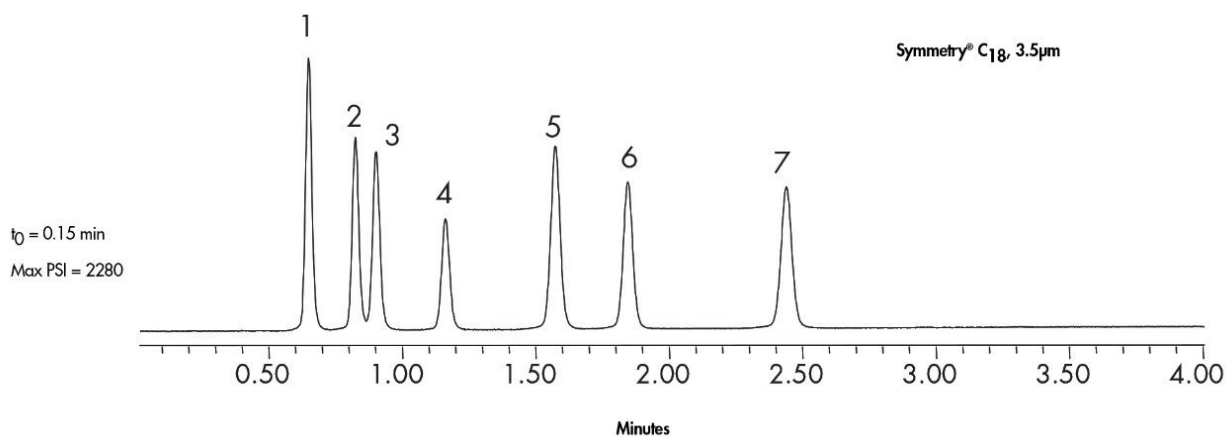
Temperature: 30° C

Detection: UV @ 270 nm

Time (min)	Profile	
	%A	%B
0	100	0
4	50	50

---

## Results and Discussion



---

## Featured Products

WA31763.157, June 2003

© 2021 Waters Corporation. All Rights Reserved.