

## Terfenadine and Related Compound

---

Waters Corporation



This is an Application Brief and does not contain a detailed Experimental section.

---

### Abstract

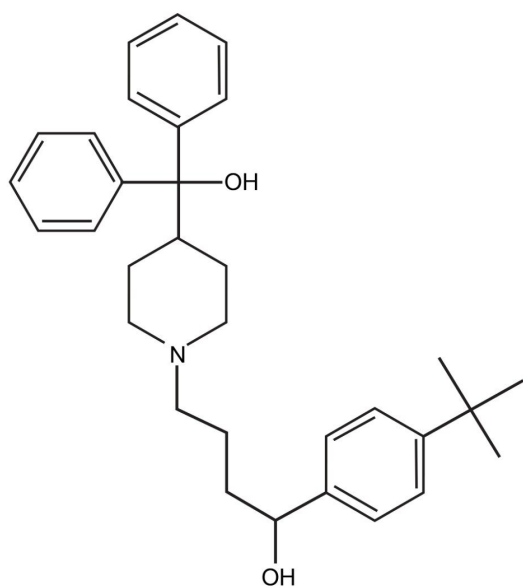
This application brief highlights the analysis of Terfenadine and related compounds using Symmetry C<sub>8</sub> Columns.

---

## Introduction

The compounds analyzed in this study are:

1. Terfenadine
2. Terfenadine Related Compound ARS



### 1. Terfenadine

---

## Experimental

### HPLC Method

Column:

Symmetry C<sub>8</sub>, 4.6 x 250 mm, 5 μm

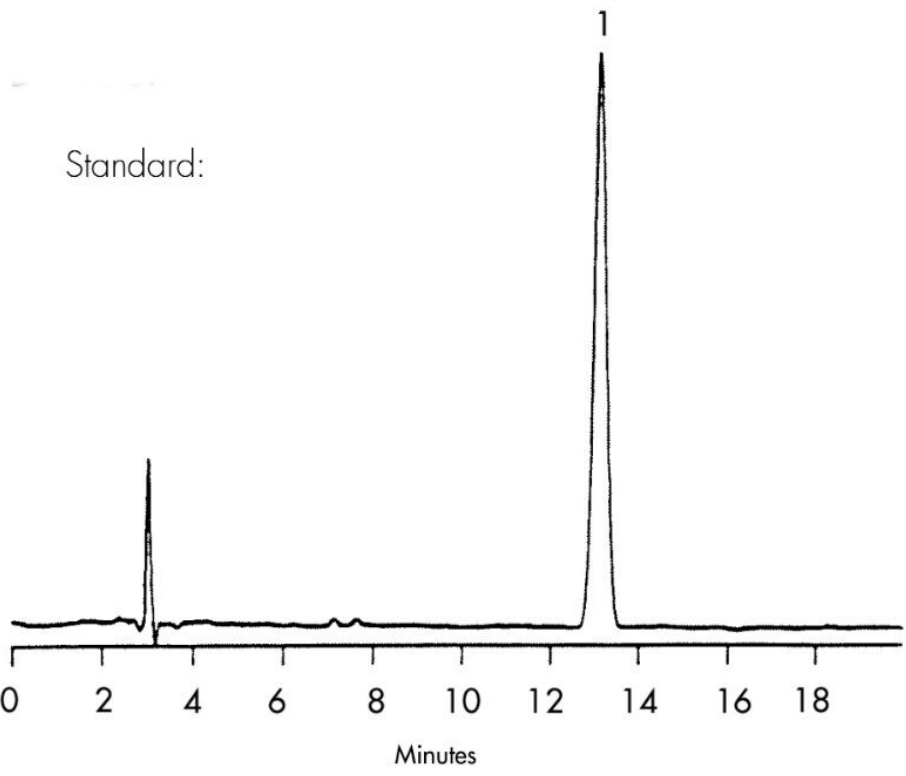
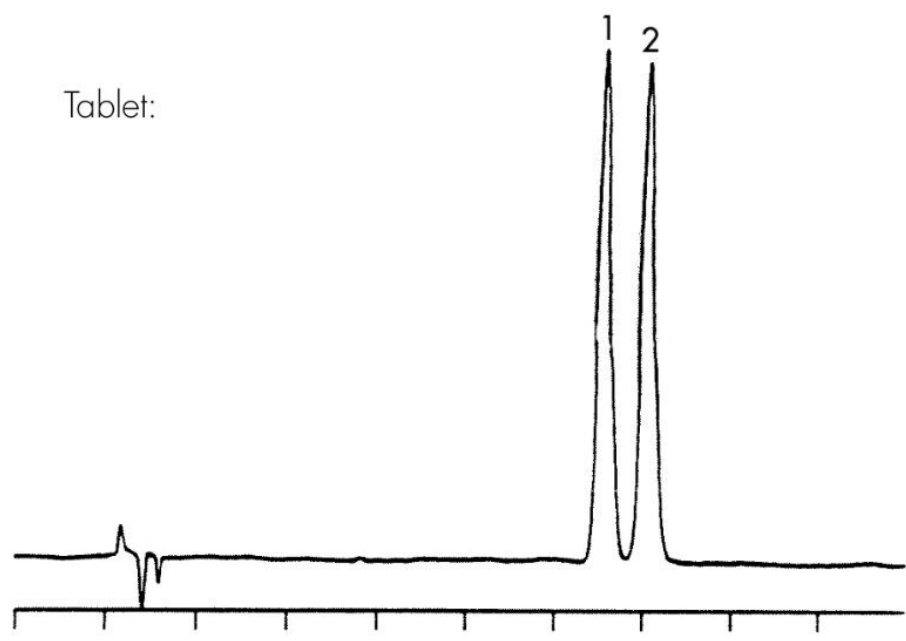
Part number:

WAT054270

|                    |   |
|--------------------|---|
| Mobile phase:      | 100 mM triethylammonium phosphate, pH 7.0/methanol 20:80  |
| Flow rate:         | 1.0 mL/min  |
| Injection volume:  | A. 15 $\mu$ L of mixture with 0.6 mg/mL terfenadine and 0.15 mg/mL of terfenadine related compound ARS<br>B. 15 $\mu$ L of 8mg/mL crushed tablet (equivalent to 0.6mg/mL terfenadine) |
| Detection:         | UV @ 235 nm   |
| USP Tailing Factor |   |
| 1. 1.0             |   |

---

## Results and Discussion



---

Featured Products

WA31763.165, June 2003

© 2021 Waters Corporation. All Rights Reserved.