

Theophylline and Related Compounds

Waters Corporation



This is an Application Brief and does not contain a detailed Experimental section.

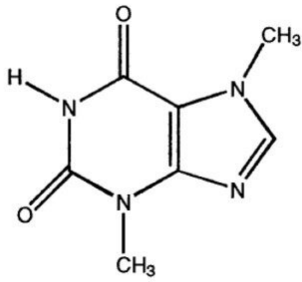
Abstract

This application brief highlights the analysis of theophylline and related compounds using Symmetry Shield RP₁₈ Columns.

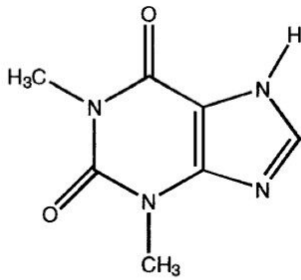
Introduction

The compounds analyzed in this study are:

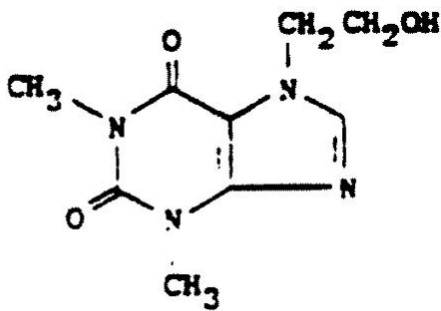
1. Theobromine
2. Theophylline
3. 7-(2-hydroxyethyl) Theophylline



1. Theobromine



2. Theophylline



3. 7-(2-hydroxyethyl) Theophylline

Experimental

HPLC Method

Column:

Symmetry Shield RP₁₈, 3.0 x 150 mm, 5 μm

Part number: 186000692

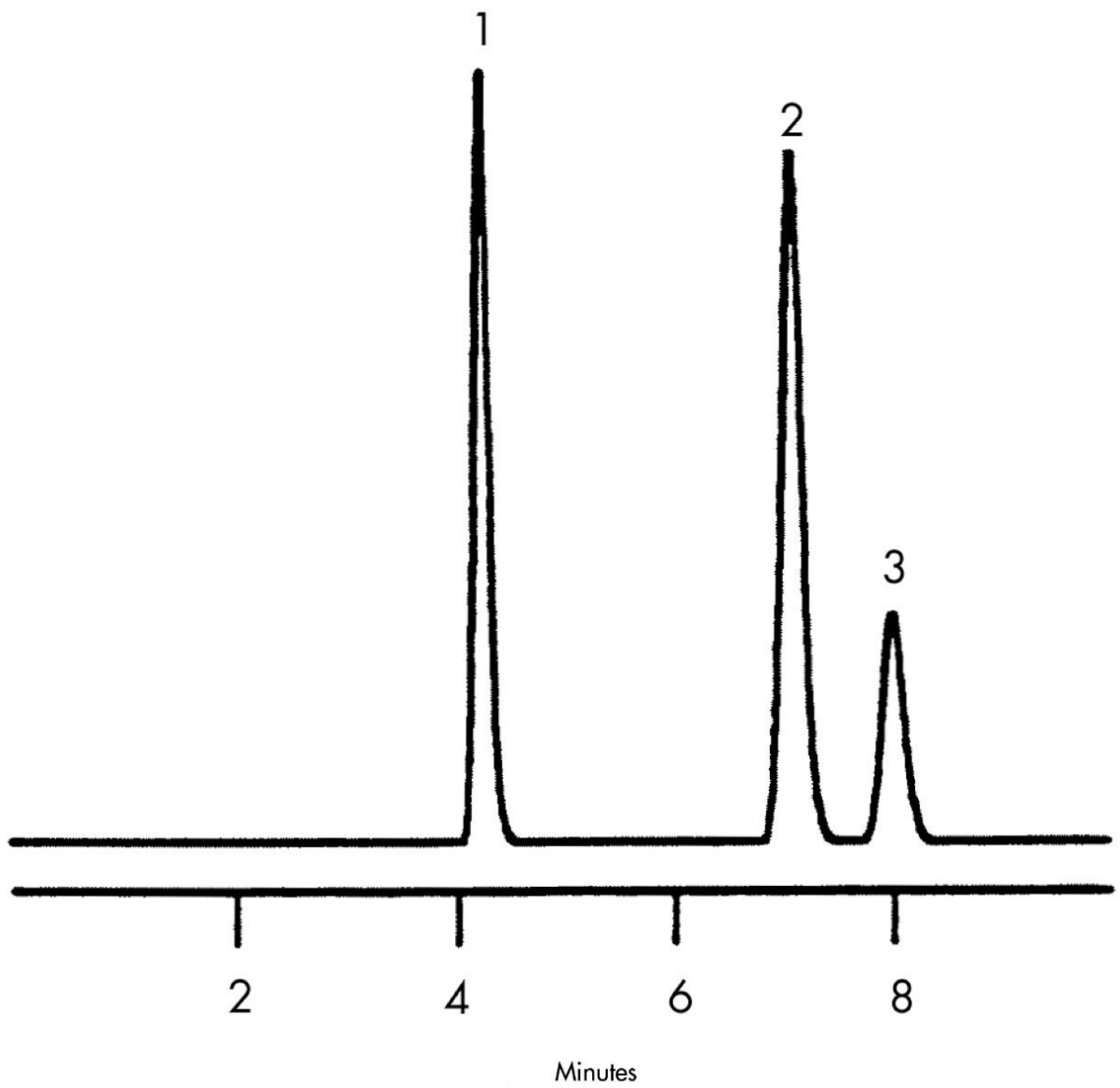
Mobile phase: 5 mM potassium phosphate, pH 2.0/acetonitrile
95:5

Flow rate: 0.6 mL/min

Injection volume: 5 μ L injection of solution containing
theobromine (0.22 mg/mL), theophylline (0.26
mg/mL), and 7-(2-hydroxyethyl) theophylline
(0.13 mg/mL)

Detection: UV @ 270 nm

Results and Discussion



Featured Products

WA31763.169, June 2003

© 2021 Waters Corporation. All Rights Reserved.