

## Theophylline and Related Compounds

---

Waters Corporation



This is an Application Brief and does not contain a detailed Experimental section.

---

### Abstract

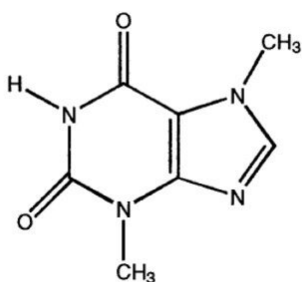
This application brief highlights the analysis of theophylline and related compounds using Symmetry Shield RP<sub>18</sub> Columns.

---

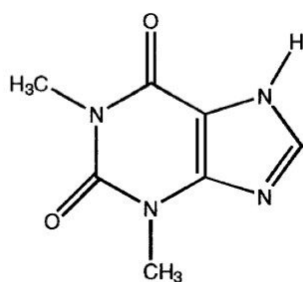
## Introduction

The compounds analyzed in this study are:

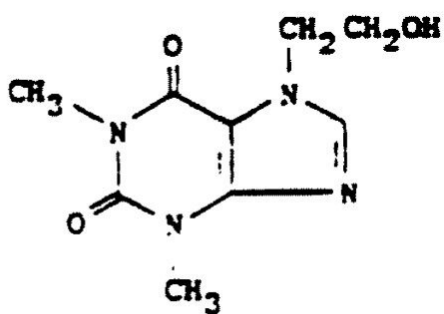
1. Theobromine
2. Theophylline
3. 7-(2-hydroxyethyl) Theophylline



**1. Theobromine**



**2. Theophylline**



**3. 7-(2-hydroxyethyl) Theophylline**

---

## Experimental

### HPLC Method

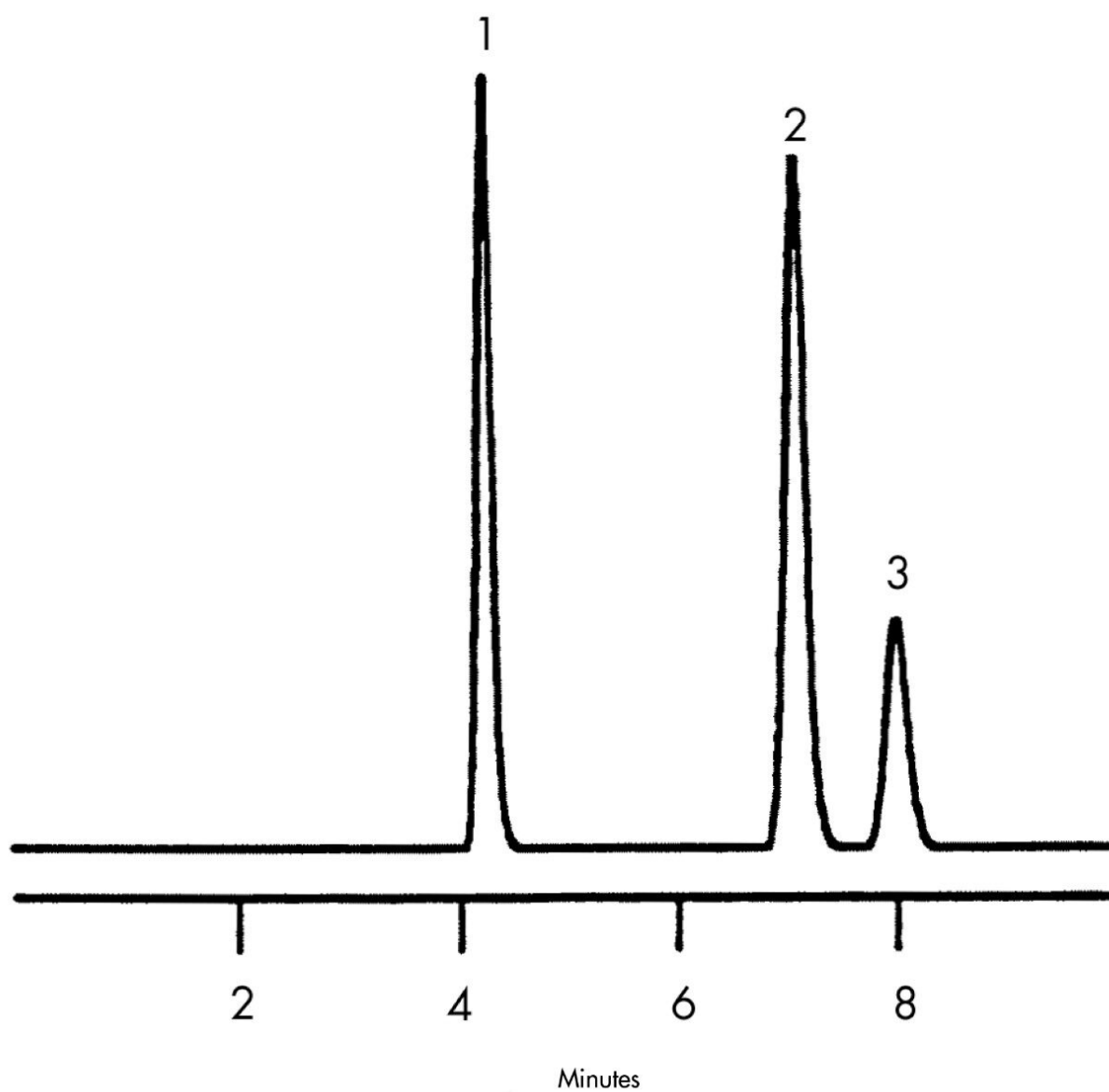
Column:

Symmetry Shield RP<sub>18</sub>, 3.0 x 150 mm, 5 μm

Part number:	186000692
Mobile phase:	5 mM potassium phosphate, pH 2.0/acetonitrile 95:5
Flow rate:	0.6 mL/min
Injection volume:	5 µL injection of solution containing theobromine (0.22 mg/mL), theophylline (0.26 mg/mL), and 7-(2-hydroxyethyl) theophylline (0.13 mg/mL)
Detection:	UV @ 270 nm

---

## Results and Discussion



---

## Featured Products

WA31763.169, June 2003

