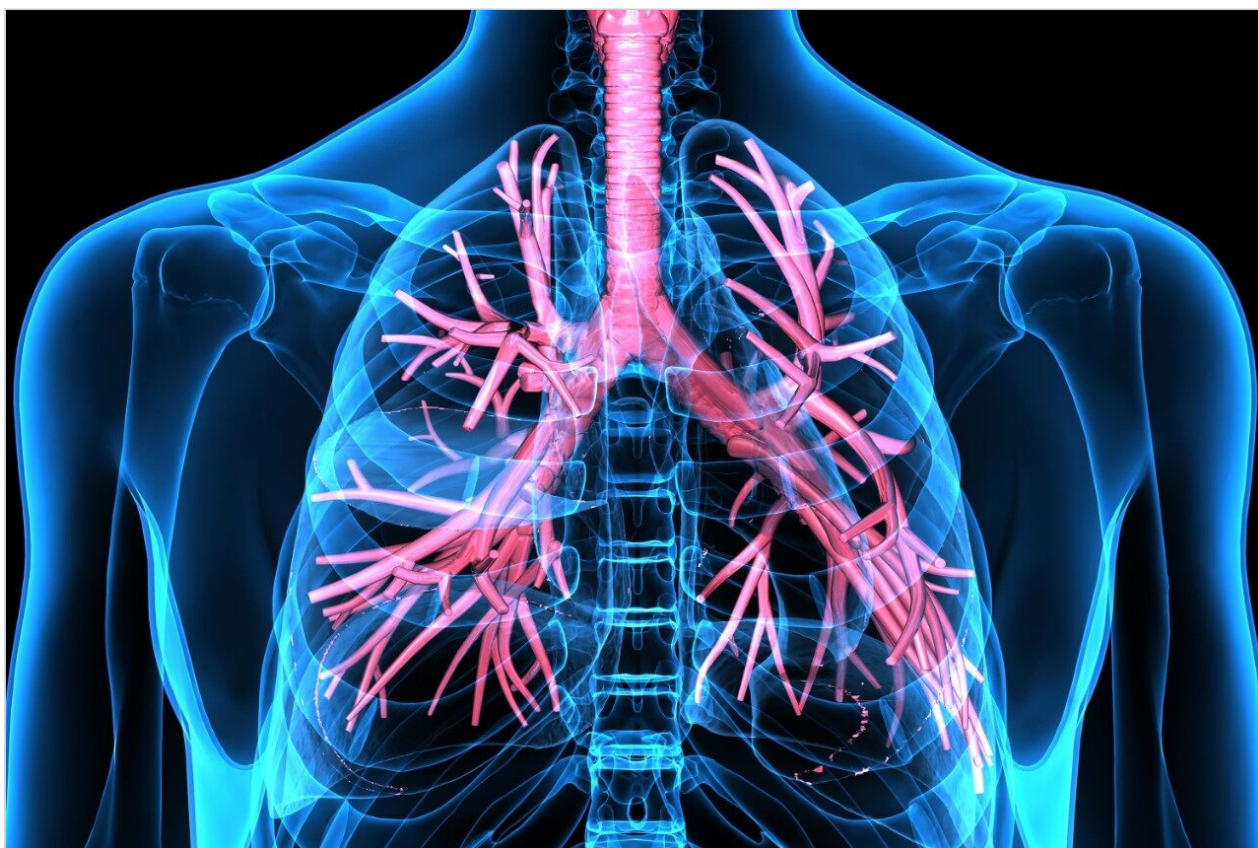




Theophylline and Related Compounds

Waters Corporation



This is an Application Brief and does not contain a detailed Experimental section.

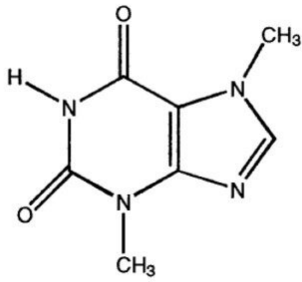
Abstract

This application brief highlights the analysis of theophylline and related compounds using Symmetry Shield RP₁₈ Columns.

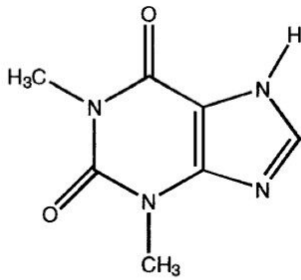
Introduction

The compounds analyzed in this study are:

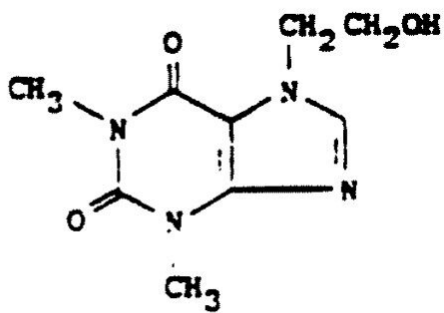
1. Theobromine
2. Theophylline
3. 7-(2-hydroxyethyl) Theophylline



1. Theobromine



2. Theophylline



3. 7-(2-hydroxyethyl) Theophylline

Experimental

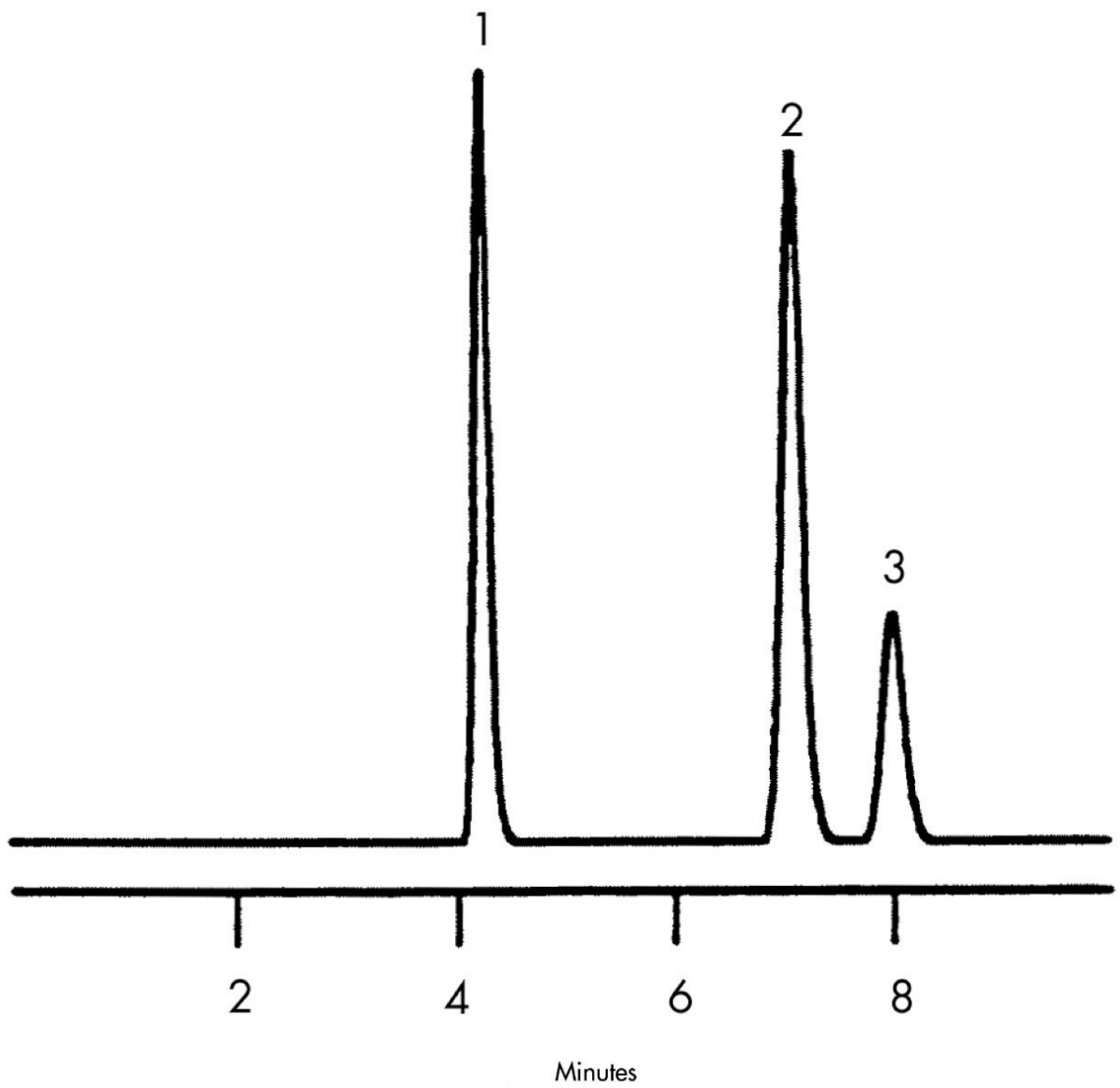
HPLC Method

Column:

Symmetry Shield RP₁₈, 3.0 x 150 mm, 5 μm

Part number:	186000692
Mobile phase:	5 mM potassium phosphate, pH 2.0/acetonitrile 95:5
Flow rate:	0.6 mL/min
Injection volume:	5 μ L injection of solution containing theobromine (0.22 mg/mL), theophylline (0.26 mg/mL), and 7-(2-hydroxyethyl) theophylline (0.13 mg/mL)
Detection:	UV @ 270 nm

Results and Discussion



Featured Products

WA31763.169, June 2003

© 2021 Waters Corporation. All Rights Reserved.