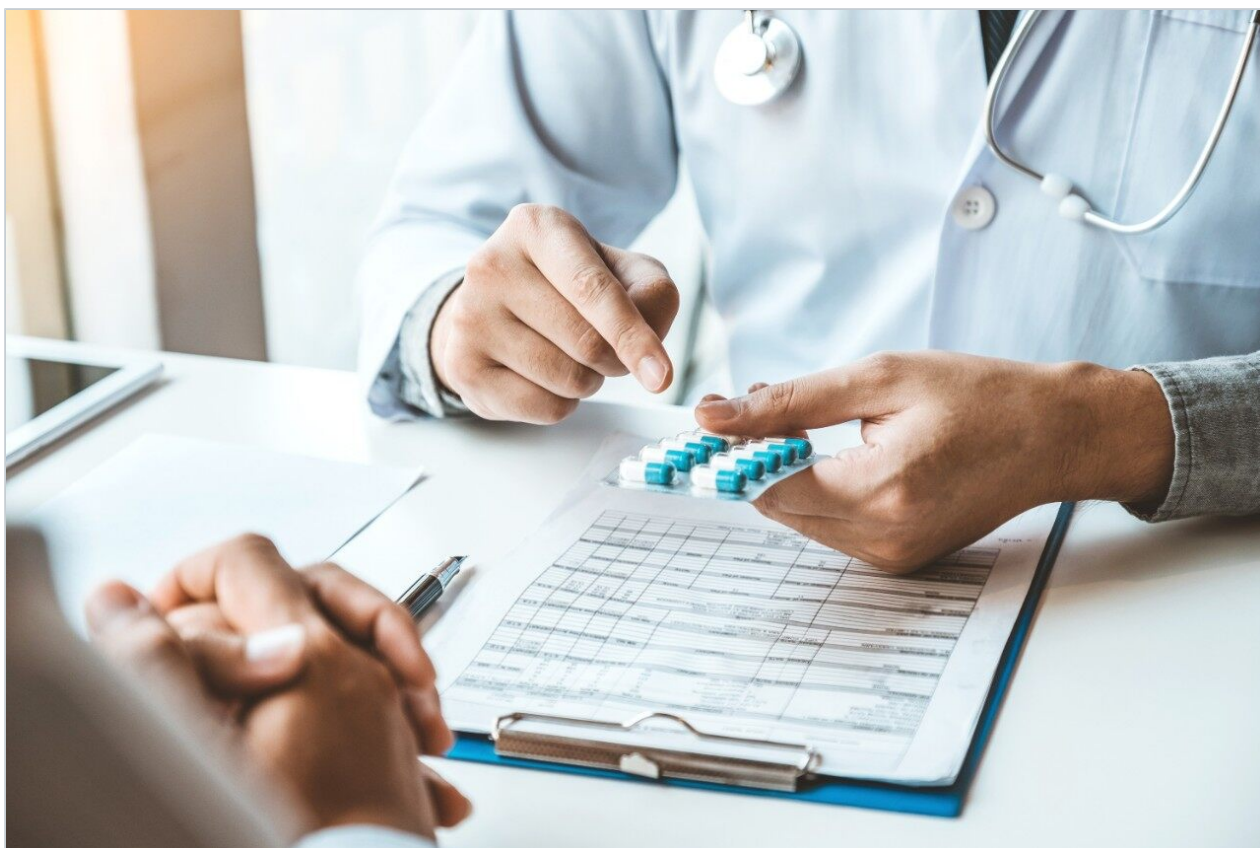


Application Note

Tricyclic Antidepressants - Symmetry C18 Column

Waters Corporation



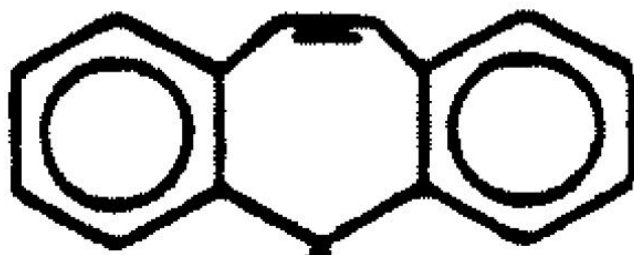
This is an Application Brief and does not contain a detailed Experimental section.

Abstract

This application brief demonstrates analysis of tricyclic antidepressants.

Introduction

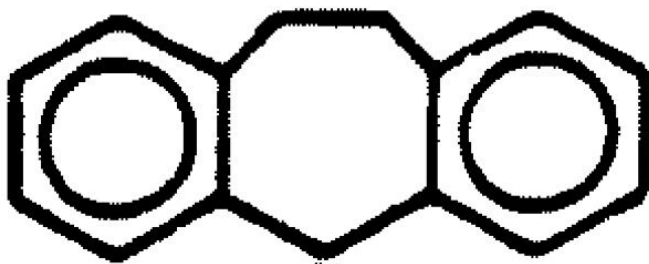
The compounds used in this study are –



• HCl



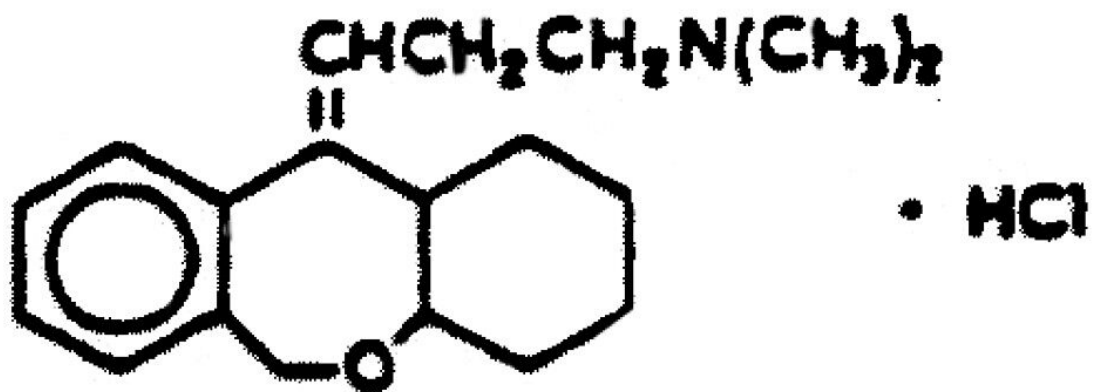
1. Protriptyline HCl



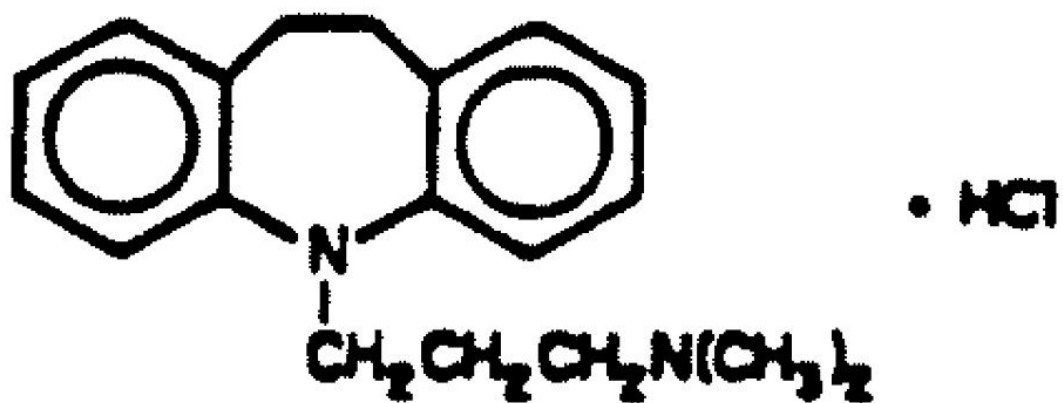
• HCl



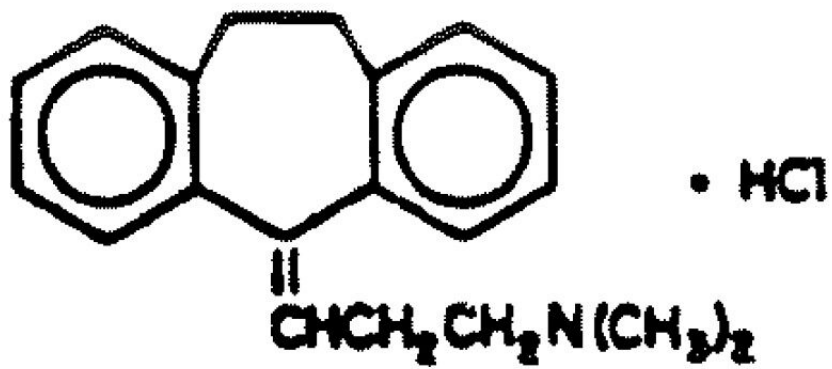
2. Nortriptyline HCl



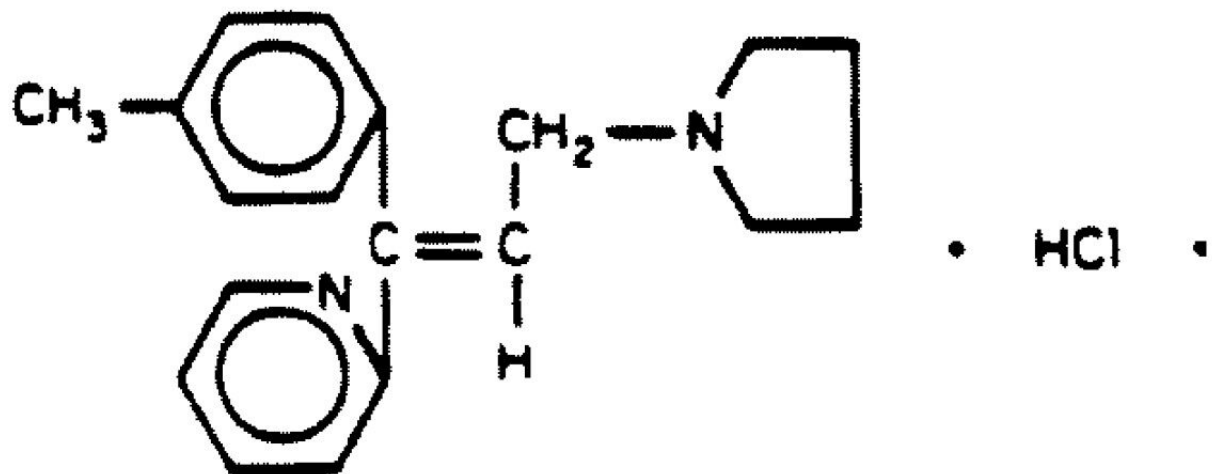
3. Doxepin HCl



4. Imipramine HCl



5. Amitriptyline HCl



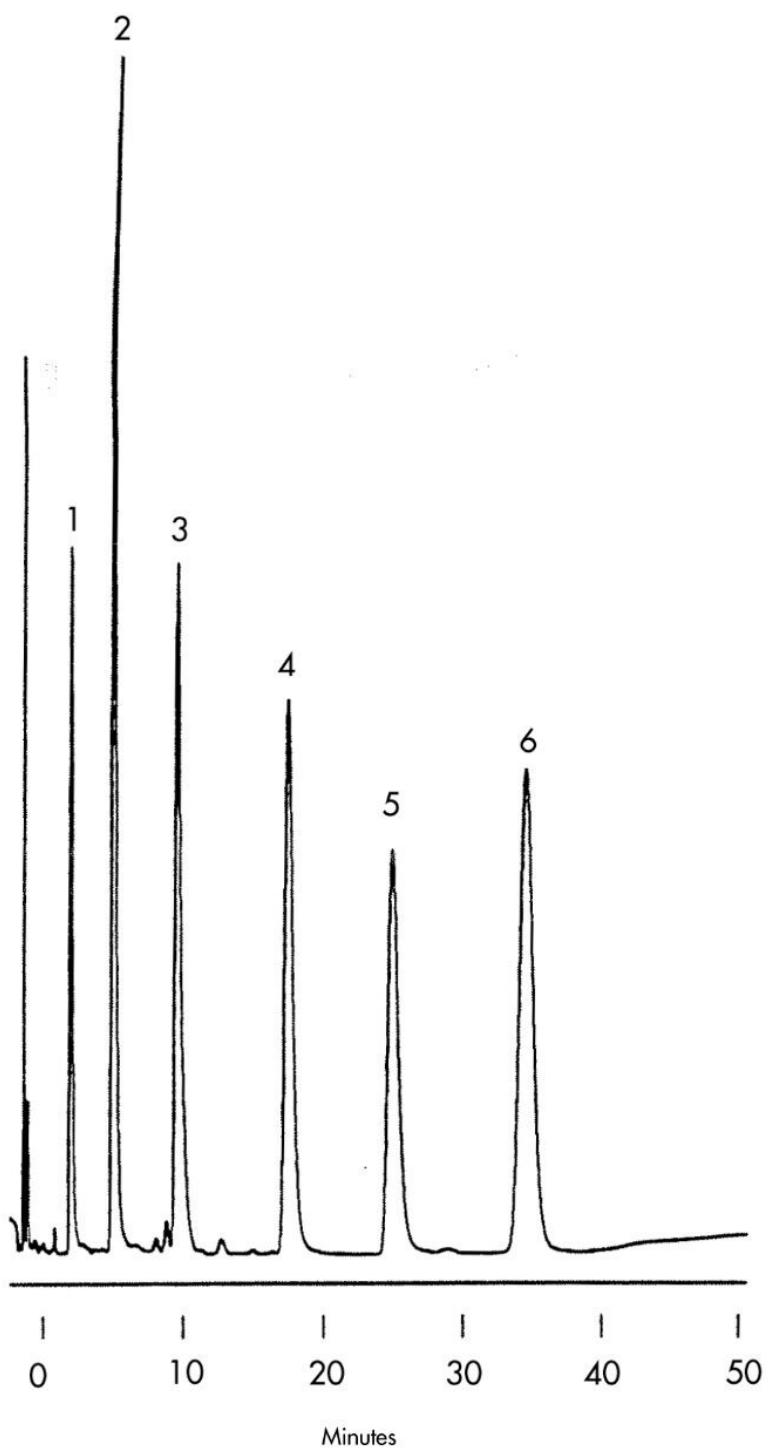
6. Trimipramine

Experimental

HPLC Method

Column:	Symmetry C ₁₈ , 3.9 x 150 mm, 5 μm
Part numbers:	WAT046980
Mobile phase:	20 mM potassium phosphate, pH 7/methanol 35:65
Flow rate:	1.0 mL/min
Injection volume:	20 μL of 100 μg/mL sample
Detection:	UV @ 254 nm

Results and Discussion



Featured Products

WA31763.173, June 2003

© 2021 Waters Corporation. All Rights Reserved.